



## Lewisham Way, SE4

£425,000

Offered to the market is this bright and modern two-bedroom purpose-built apartment, ideally located on Lewisham Way in the heart of SE4. Set within a well-maintained development, the property offers contemporary living with excellent transport links and a wealth of local amenities right on your doorstep.

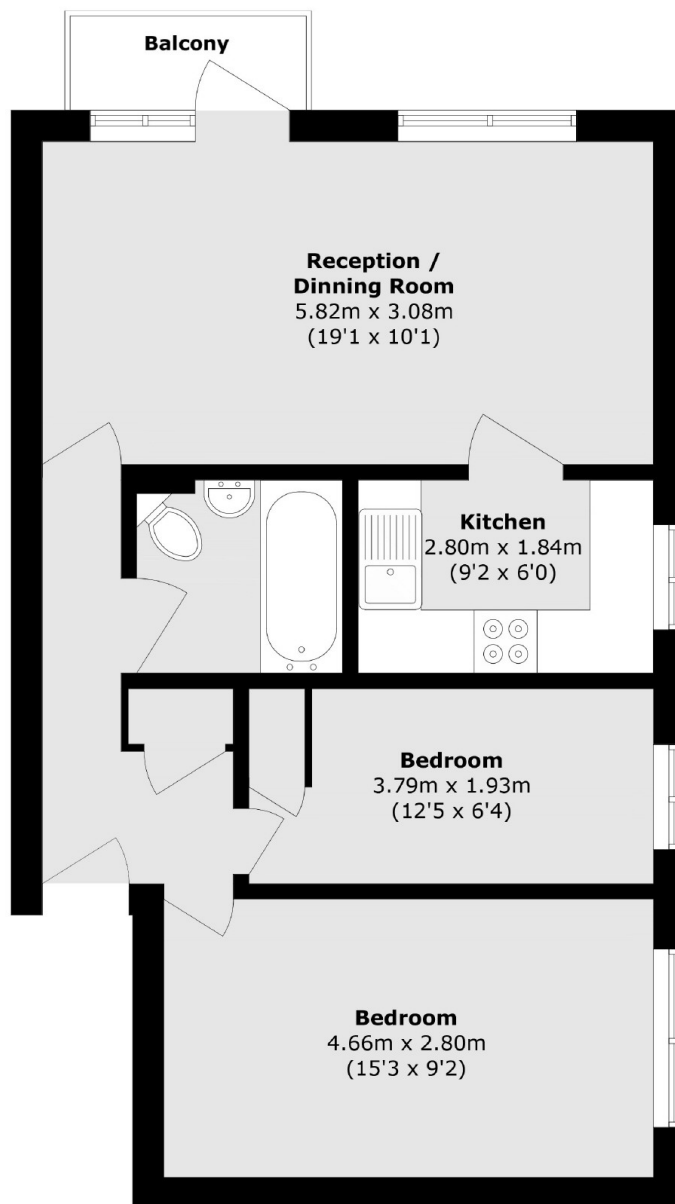
The apartment is perfect for professionals, couples, or small families seeking comfortable living in a vibrant and well-connected area. The private balcony provides a tranquil spot to unwind, while the undercroft parking adds valuable convenience.

Located just moments from the bars, cafes, and shops of Brockley and New Cross, and within easy reach of Greenwich and Blackheath. Brockley Market is also just a short distance away with weekly markets on a Saturday. Lewisham DLR is also nearby for swift access to Canary Wharf and the City.

### Features

- Two Bedroom Apartment
- Secure Undercroft Parking
- Balcony With Stunning Views
- Excellent Transport Links
- Third Floor
- Close To Local Amenities

Lewisham Way,  
London, SE4



Total area (approx.): 54.3 sq. m (584.5 sq. ft)

Balcony area (approx.): 1.8 sq. m (19.4 sq. ft)

**Dexters**

New Cross  
256 New Cross Road  
London  
SE14 5PL  
Sales  
020 7313 3660

Energy Rating: D. We aim to make our particulars both accurate and reliable. However they are not guaranteed; nor do they form part of an offer or contract. If you require clarification on any points then please contact us, especially if you're traveling some distance to view. Please note that appliances and heating systems have not been tested and therefore no warranties can be given as to their good working order.

 **RICS** | Regulated  
Estate Agent  
and Letting Agent

dexters.co.uk