



Webbs

Helping people move since 1994

Hadley Way | Walsall | WS2 7LL

Offers Over £170,000

 **Webbs**  
estate agents

## Summary

**\*\*THREE BEDROOMS\*\*DECEPTIVELY SPACIOUS\*\*GARAGE TO THE REAR\*\*TWO RECEPTION ROOMS\*\*FITTED KITCHEN\*\*FOUR PIECE SUITE BATHROOM\*\*PERFECT FIRST TIME BUY OR INVESTMENT\*\*POPULAR LOCATION\*\*VIEWING ESSENTIAL\*\***

Nestled on Hadley Way in Walsall, this deceptively spacious three-bedroom terraced home presents an excellent opportunity for first-time buyers or investors alike. The property boasts a charming lawned front garden, leading to a welcoming entrance porch that sets the tone for the rest of the home.

Upon entering, you will find a comfortable lounge that flows seamlessly into a separate dining room, providing ample space for family gatherings and entertaining guests. Adjacent to the dining area is a fitted kitchen. A convenient lobby area further enhances the functionality of the ground floor.

Venturing upstairs, the first floor reveals three generous bedrooms, each offering a peaceful retreat for rest and relaxation. The family bathroom features a four-piece suite, ensuring that all your bathing needs are met with comfort and style.

To the rear of the property, you will discover a private and enclosed garden, perfect for outdoor activities or simply enjoying a quiet moment in the fresh air. Additionally, there is access to the rear for

## Key Features

- THREE BEDROOM TERRACE HOME
- TWO RECEPTION ROOMS
- FITTED BATHROOM
- PERFECT FIRST TIME BUY OR INVESTMENT
- POPULAR LOCATION
- GARAGE TO THE REAR
- FITTED KITCHEN
- DECEPTIVELY SPACIOUS
- CLOSE TO ALL LOCAL AMENITIES
- CALL WEBBS TO SECURE YOUR VIEWING ON 01922 663399!!

## Rooms and Dimensions

### Entrance Hall

### Lounge

14'2" x 12'7" (4.323m x 3.857m)

### Dining Room

10'5" x 9'3" (3.187m x 2.834m)

### Kitchen

9'2" x 8'7" (2.806m x 2.619m)

### Lobby

3'4" x 15'0" (1.027m x 4.589m)

### First Floor Landing

### Bedroom One

13'4" x 13'5" (4.066m x 4.114m)

### Bedroom Two

10'5" x 13'1" (3.195m x 4.011m)

### Bedroom Three

8'10" x 8'2" (2.693m x 2.505m)

### Family Bathroom

8'2" x 5'8" (2.492m x 1.729m)

### Identification Checks B





Webbs  
Helping people move since 1994



Webbs  
Helping people move since 1994



Webbs  
Helping people move since 1994



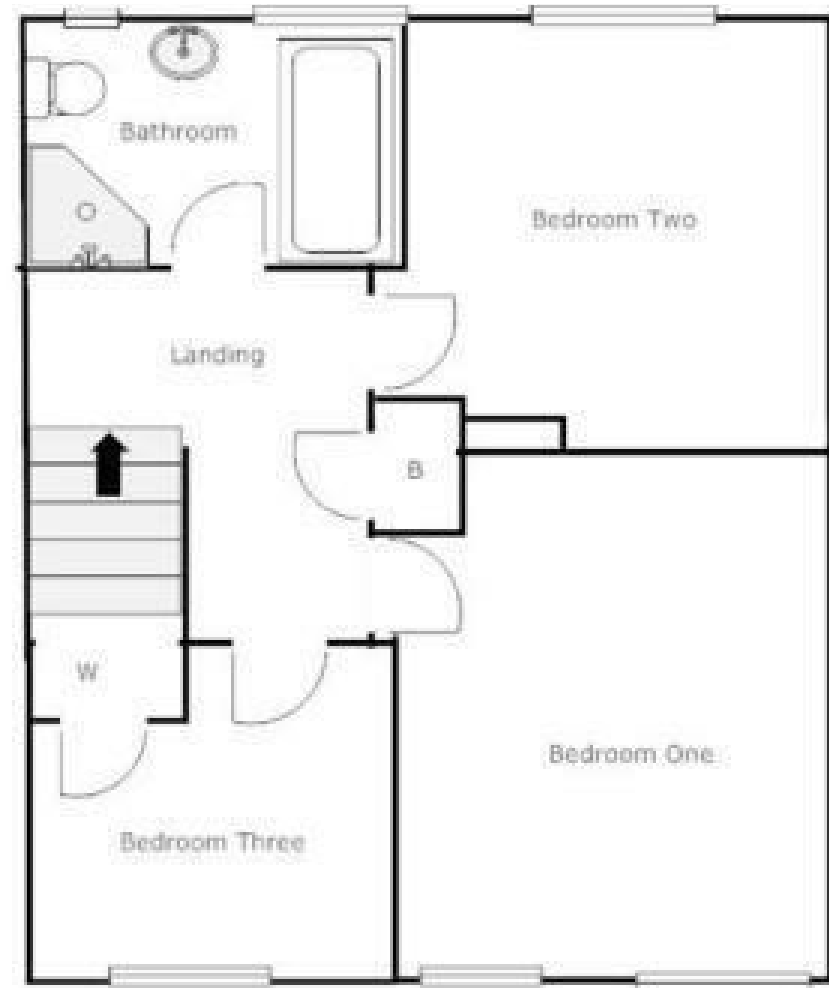
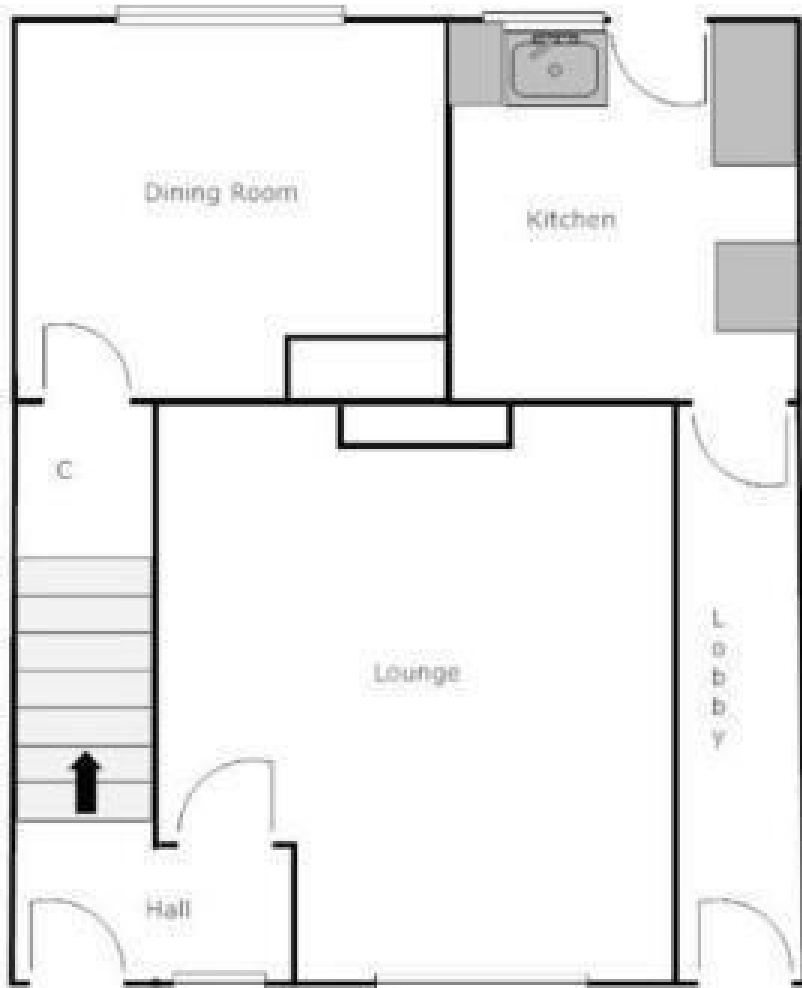
Webbs  
Helping people move since 1994



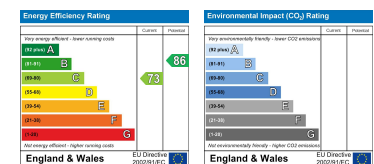
Webbs  
Helping people move since 1994



Webbs  
Helping people move since 1994



Webbs Estate Agents - endeavour to maintain accurate depictions of properties in Virtual Tours, Floor Plans and descriptions, however, these are intended only as a guide and purchasers must satisfy themselves by personal inspection.



212 High Street, Bloxwich, Walsall, WS3 3LA

Tel: 01922 663399 | Email: [bloxwich@webbestateagents.co.uk](mailto:bloxwich@webbestateagents.co.uk) | [www.webbestateagents.co.uk](http://www.webbestateagents.co.uk)

