

23 Cottersdale  
Gardens  
Chapel House  
Newcastle upon Tyne  
NE5 1JQ



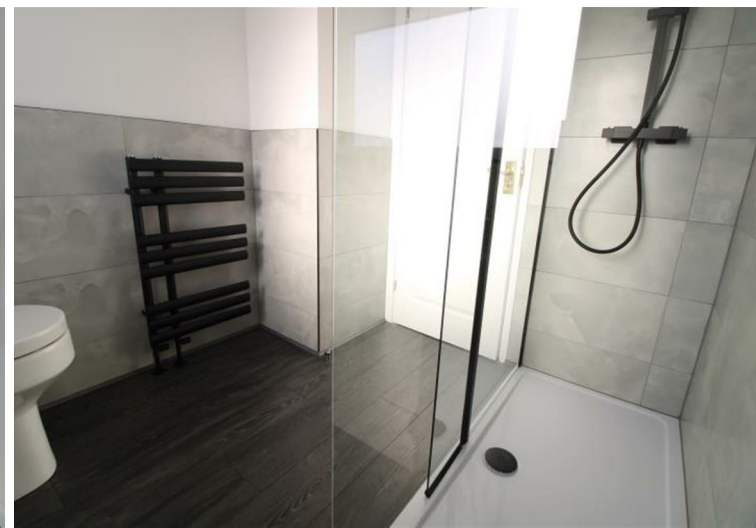
Offers Over  
£260,000



23 Cottesdale Gardens  
Chapel House  
Newcastle upon Tyne  
NE5 1JQ

- 3 Bedroom Semi Detached Bungalow
- Good Size Lounge with Bi-Folding Doors to the Rear
- Driveway Parking for up to 3 cars
- Separate Utility Area
- Newly Fitted Sealed Unit Double Glazed Windows
- Completely Refurbished Throughout
- Brand New Kitchen and Bathroom
- Enclosed West Facing Rear Garden
- Gas Central Heating
- EPC C | Council Tax Band C





### Ground Floor

Approx. 52.9 sq. metres (1000.1 sq. feet)



Total area: approx. 92.9 sq. metres (1000.1 sq. feet)

Whilst every attempt has been made to ensure the accuracy of the floor plan contained here, measurements of doors, windows, rooms and any other items are approximate and no responsibility is taken for any error, omission, or mis-statement. The Plan is for illustrative purposes only. Version 1

Plan produced using PlanUp.

EPC Rating: C  
Council Tax Band: C

Whilst every care has been taken to prepare these particulars, they are for guidance purposes only. All measurements are approximate and whilst every care has been taken to ensure their accuracy, they should not be relied upon and potential buyers/tenants are advised to recheck the measurements. The agent has not tested any equipment, services, fixtures or fittings and makes no representation regarding their condition.

#### CONTACT

128 The Roman Way, West Denton,  
Newcastle upon Tyne, NE5 5AD

E:  
westdenton@goodfellowsestateagents.com  
T: 0191 2677500

**Goodfellows**  
estate agents.com