



WESTBOURNE GARDENS, W2

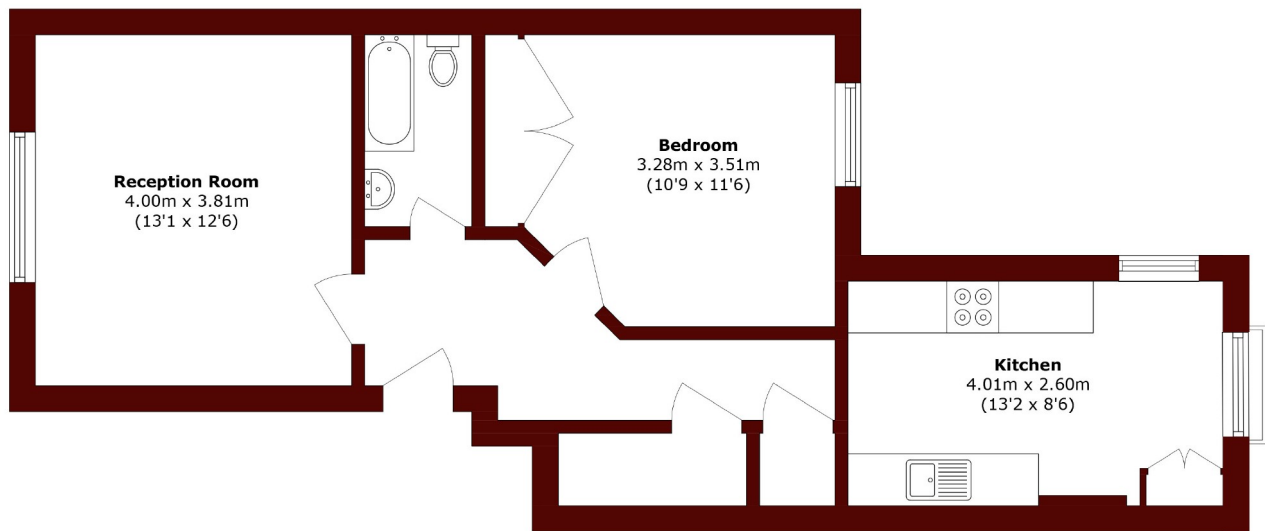
£3,445 per month

A stylish and exceptionally spacious one double bedroom flat with high ceilings on the raised ground floor of this stucco fronted period conversion conveniently located on this popular Garden Square in Notting

One bedroom
High ceilings
Communal gardens

Ample storage
Natural light
EPC - C

STEP INSIDE WESTBOURNE GARDENS



Total area (approx.): 54.0 sq. m (581.3 sq. ft)

Notting Hill
020 7313 6910

Energy Rating: C We aim to make our particulars both accurate and reliable. However, they are not guaranteed; nor do they form part of an offer or contract. If you require clarification on any points then please contact us, especially if you're traveling some distance to view. Please note that appliances and heating systems have not been tested and therefore no warranties can be given as to their good working order

MARSH &
PARSONS