
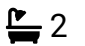



2a Dyers Lane, Lymm, WA13 9QL

£495,000

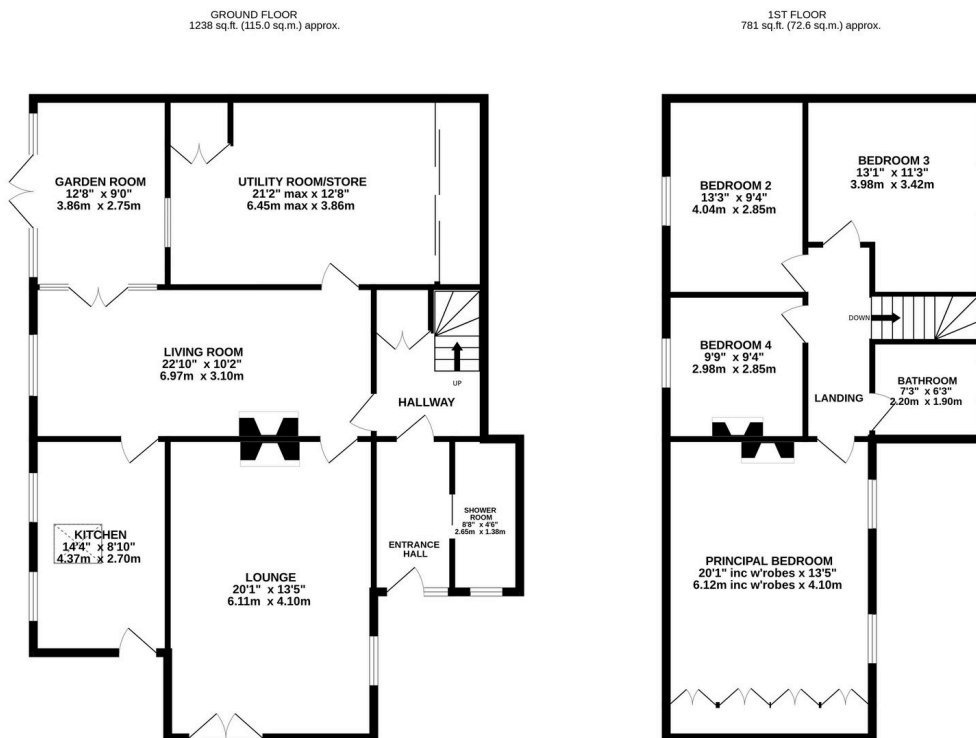
 4  2  2



A beautifully presented mid-1800s four-bedroom home, perfectly blending period charm with stylish modern living, situated on a private road close to Lymm village, excellent amenities, and highly regarded schools.

## Key Features

- Exceptional mid-1800s four-bedroom home
- Beautiful blend of period charm and modern living
- Kitchen with Leisure range cooker
- Family bathroom with freestanding bath
- EV charging point and automated watering system
- Private road location close to Lymm village
- Multiple log burners and feature fireplaces
- Spacious lounge, sitting room, and garden room
- Electric sliding gates and two-car driveway
- Well-proportional multi-use room with practical utility space



TOTAL FLOOR AREA: 2019 sq.ft. (187.6 sq.m.) approx.

Whilst every attempt has been made to ensure the accuracy of the floorplan contained here, measurements of doors, windows, rooms and any other items are approximate and no responsibility is taken for any error, omission or mis-statement. This plan is for illustrative purposes only and should be used as such by any prospective purchaser. The services, systems and appliances shown have not been tested and no guarantee as to their operability or efficiency can be given.

Made with Metropix ©2026