

Hartfield Crescent, SW19

£399,950

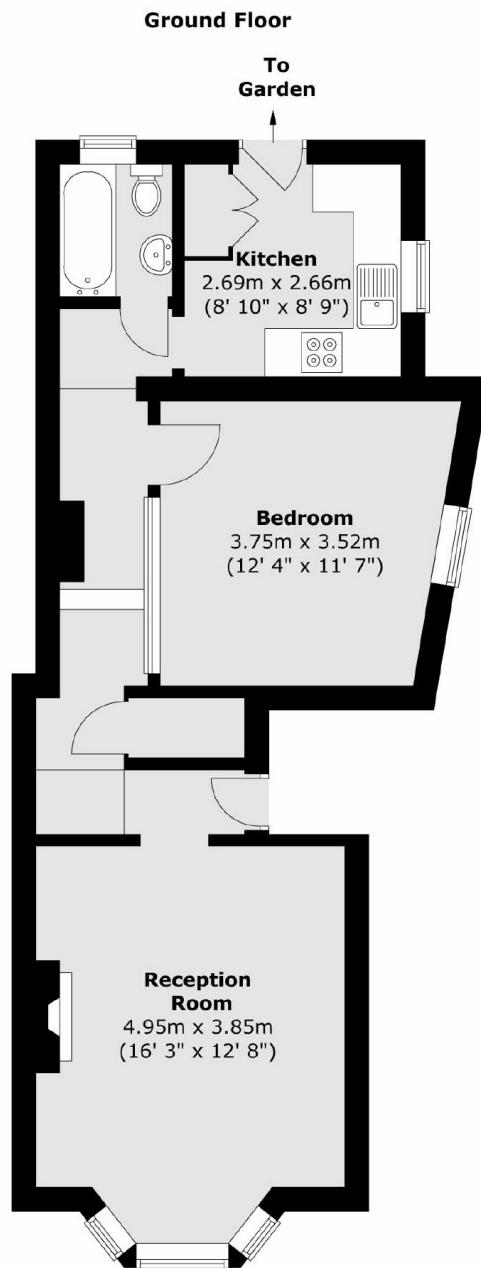
A one double bedroom, recently renovated ground floor flat, offering a great sized private west facing garden, an off street parking space to the front and no onward chain.

Hartfield Crescent is a quiet one-way street, just moments from Wimbledon's vibrant town centre with its excellent shops, cafés, restaurants, and leisure facilities. The District Line, National Rail and Thameslink services are all nearby.

Features

- Over 560 Square Feet
- West Facing Garden
- Off Street Parking
- One Way Road
- Central Wimbledon Location
- No Onward Chain

Hartfield Crescent, London, SW19



Total area (approx.) : 52.2 sq. m (562 sq. ft)