



## CRANE STREET, SE10

£2,400 per month

Period town house  
Two bedrooms  
Private garden  
Modern bathroom  
Close to riverfront  
Energy rating: D

@marshandparsons  
marshandparsons.co.uk

MARSH &  
PARSONS



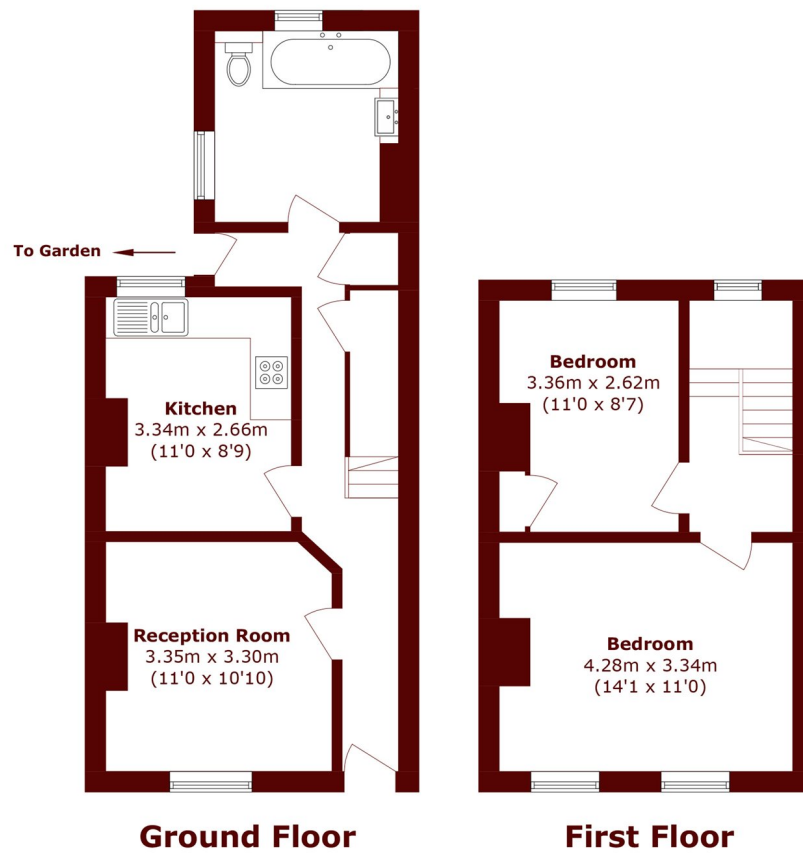
# ABOUT THE PROPERTY

A two bedroom terraced house with a private garden. Inside you will find two double bedrooms, modern bathroom suite with shower, good size lounge and fully fitted kitchen.

Ideally located within walking distance from Cutty Sark DLR station and the centre of Greenwich. Greenwich mainline station and Greenwich Park are also close by. Greenwich town centre offers a variety of supermarkets, coffee shops, restaurants and riverside pubs and bistros.



# STEP INSIDE CRANE STREET



Total Area (approx.): 69.3 sq. m (745.9 sq. ft)

Greenwich  
020 8815 2230

Energy Rating: D We aim to make our particulars both accurate and reliable. However, they are not guaranteed; nor do they form part of an offer or contract. If you require clarification on any points then please contact us, especially if you're traveling some distance to view. Please note that appliances and heating systems have not been tested and therefore no warranties can be given as to their good working order

MARSH &  
PARSONS