



BRICK
MANAGEMENT + LETTINGS

22-02 Aspen Marsh Wall, London, E22 2AE

£5,300 Per month



22-02 Aspen Marsh Wall, London, E22 2AE

£5,300 Per month

New to the market, this stunning brand new 22nd floor spacious furnished three bedroom executive apartment is located in the sought after Aspen, Canary Wharf development.

The apartment itself benefits from an entrance hall with utility and storage cupboards leading to a large open plan living / dining area with wooden flooring, designer fully integrated grey kitchen with marble work tops, large master bedroom with dressing area and luxury en-suite bathroom, two further double bedrooms with fitted wardrobes, luxury bathroom suite, secure video entry system and neutral decoration throughout.

The apartment offers views across Canary Wharf / the city from the living area and all three bedrooms.

On site facilities include a Concierge service, Gymnasium, The Aspen Club Spa & Vitality Pool (summer 2026), Business lounge and screening room, Games room and Private dining room.

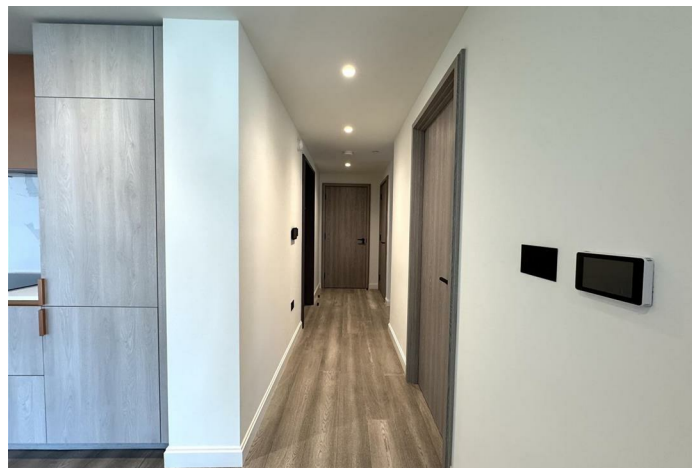
Aspen is just a few minutes walk from numerous local restaurants and amenities, plus Canary Wharf underground station / Elizabeth line and DLR, giving 15 minute access to London city Airport.

* Sorry no allocated parking with this apartment *

Description



Situation

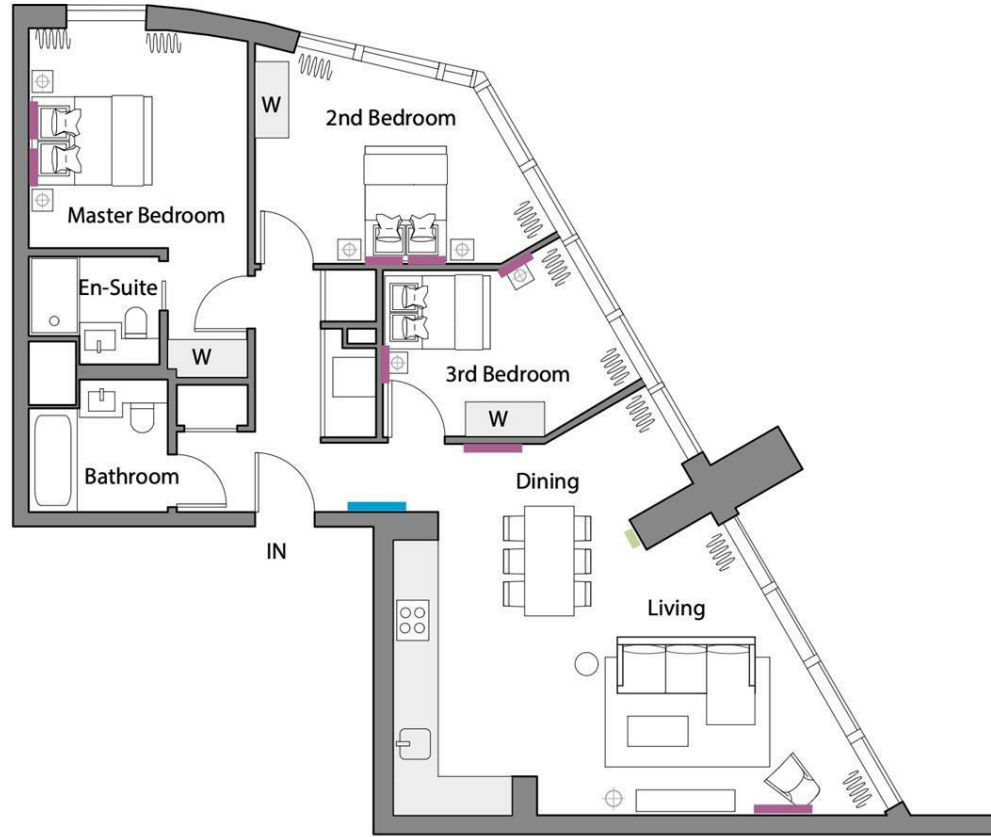


Furnished

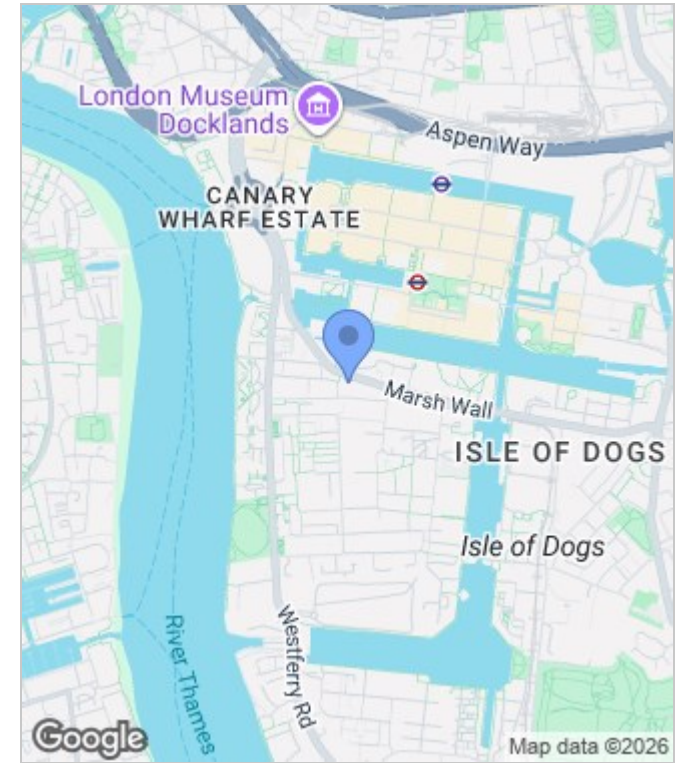
Council Tax Band: G

Available: 13th July 2026

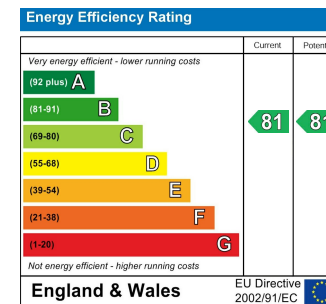
SPACE PLAN PROPOSED



- Clock
- Mirror
- Art Work
- W = Wardrobe



Energy Performance Graph



These particulars, whilst believed to be accurate are set out as a general outline only for guidance and do not constitute any part of an offer or contract. Intending purchasers should not rely on them as statements of representation of fact, but must satisfy themselves by inspection or otherwise as to their accuracy. No person in this firm's employment has the authority to make or give any representation or warranty in respect of the property.