



**Summerfield Gardens, Lowestoft NR33 9BS**

**welcome to**

## **Summerfield Gardens, Lowestoft**

A well-presented three bedroom mid terraced property, featuring an expansive outbuilding in the rear garden, perfect for a home office.

### **Entrance Hall**

Double glazed Front door, Door to Lounge and Kitchen/Diner, Under stairs storage space, Radiator, Carpet flooring.

### **Lounge**

Double glazed window to Front aspect, Radiator, Power points, Carpet flooring.

### **Kitchen/Diner**

Three Double glazed windows to Rear aspect, Double glazed door leading out to Rear garden, Partially tiled walls, Fitted Kitchen units with work surfaces, Sink and drainer unit, Space for Cooker, Space for 50/50 Fridge/Freezer unit, Radiator, Laminate wood effect flooring.

### **Utility Room**

Double glazed window to Rear aspect, Fitted Kitchen units with work surfaces, Sink and drainer unit, Plumbing for washing machine, Power points, Lino tiled effect flooring.

### **Downstairs Wc**

Window to Side aspect, WC, Wash hand basin, Tiled flooring.

### **Garden Room**

Double glazed windows and French doors to Front aspect, Spotlights, Power points, Wooden flooring.

### **Landing**

Access to Bedrooms 1-3 and Family Bathroom, Carpet flooring.

### **Bedroom One**

Double glazed window to Front aspect, Double Bedroom, Built in storage cupboard, Power points, Radiator, Carpet flooring.

### **Bedroom Two**

Double glazed window to Rear aspect, Double Bedroom, Built in wardrobe, TV and Power points, Carpet flooring.

### **Bedroom Three**

Double glazed window to Front aspect, Radiator, Power points, Carpet flooring.

### **Bathroom**

Double glazed window to Rear aspect, Fully tiled walls, WC, Wash hand basin, Bath tub with Shower unit, Shower Screen and Mixer taps, Loft hatch, Towel radiator, Tile effect flooring.

### **Front Garden**

Fencing to Front with communal parking space. Pathway leading to Front door with landscaped Side garden.

### **Rear Garden**

Brickweave patio leading to Landscaped grass, Side access to WC, Utility Room, Timber Outbuilding/ Garden room to Rear.





***view this property online*** [williamhbrown.co.uk/Property/LOW109935](http://williamhbrown.co.uk/Property/LOW109935)



welcome to

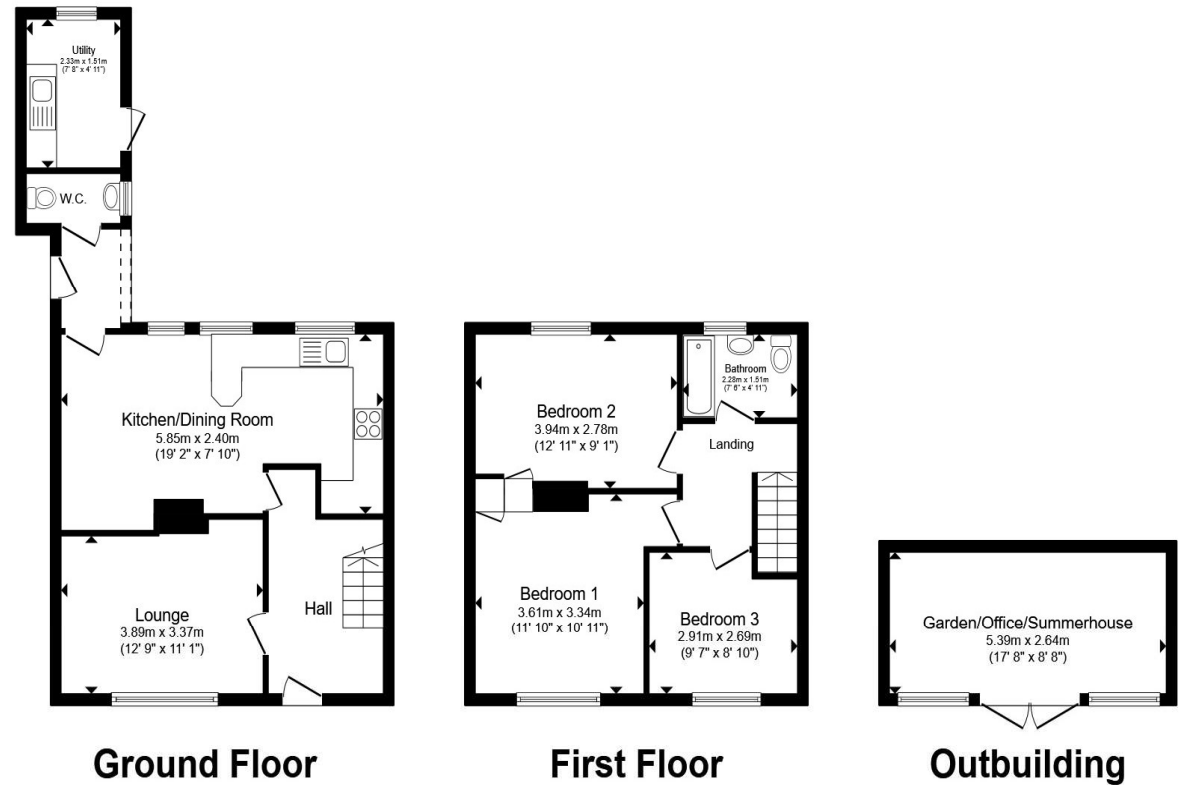
## Summerfield Gardens, Lowestoft

- Three Spacious Bedrooms
- Communal Parking Space to Front
- Landscaped Gardens
- Open Plan Kitchen/ Diner
- Large Garden Room to rear

Tenure: Freehold EPC Rating: C  
Council Tax Band: A

guide price

**£220,000**



Ground Floor

First Floor

Outbuilding

Total floor area 106.1 m<sup>2</sup> (1,142 sq.ft.) approx

This floor plan is for illustrative purposes only. It is not drawn to scale. Any measurements, floor areas (including any total floor area), openings and orientation are approximate. No details are guaranteed, they cannot be relied upon for any purpose and they do not form part of any agreement. No liability is taken for any error, omission or misstatement. A party must rely upon its own inspection(s). Powered by [www.propertybox.io](http://www.propertybox.io)



view this property online [williamhbrown.co.uk/Property/LOW109935](http://williamhbrown.co.uk/Property/LOW109935)



Property Ref:  
LOW109935 - 0002

1. MONEY LAUNDERING REGULATIONS Intending purchasers will be asked to produce identification documentation at a later stage and we would ask for your co-operation in order that there is no delay in agreeing the sale. 2. These particulars do not constitute part or all of an offer or contract. 3. The measurements indicated are supplied for guidance only and as such must be considered incorrect. Potential buyers are advised to recheck measurements before committing to any expense. 4. We have not tested any apparatus, equipment, fixtures or services and it is in the buyers interest to check the working condition of any appliances. 5. Where an EPC, or a Home Report (Scotland only) is held for this property, it is available for inspection at the branch by appointment. If you require a printed version of a Home Report, you will need to pay a reasonable production charge reflecting printing and other costs. 6. We are not able to offer an opinion either written or verbal on the content of these reports and this must be obtained from your legal representative. 7. Whilst we take care in preparing these reports, a buyer should ensure that his/her legal representative confirms as soon as possible all matters relating to title including the extent and boundaries of the property and other important matters before exchange of contracts.

William H Brown is a trading name of Sequence (UK) Limited which is registered in England and Wales under company number 4268443. Registered Office is Cumbria House, 16-20 Hockliffe Street, Leighton Buzzard, Bedfordshire, LU7 1GN. VAT Registration Number is 500 2481 05.

william h brown



**01502 585998**



[Lowestoft@williamhbrown.co.uk](mailto:Lowestoft@williamhbrown.co.uk)



138 London Road North, LOWESTOFT, Suffolk,  
NR32 1HB



[williamhbrown.co.uk](http://williamhbrown.co.uk)