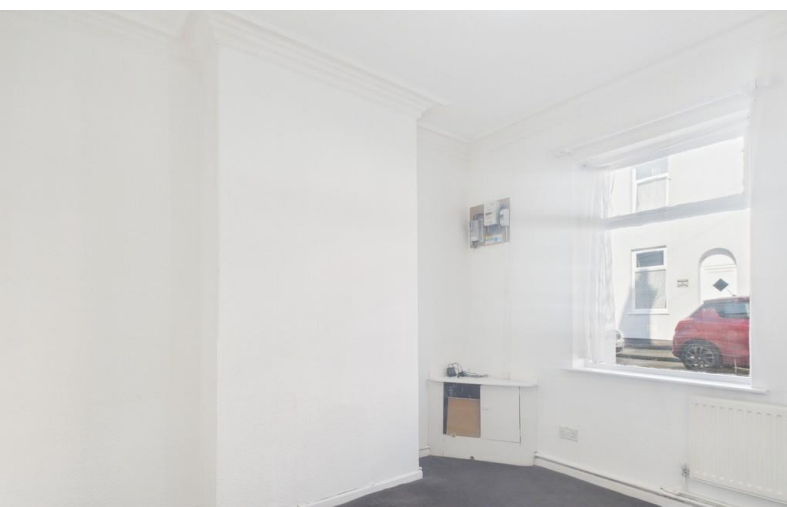


TO LET



Chatham Street, Hanley, Stoke-on-Trent

3 Bedrooms, 1 Bathroom, Terraced house

£695 pcm


MARTIN & CO



Chatham Street, Hanley, Stoke-on-Trent

3 Bedrooms, 1 Bathroom

£695 pcm

Date available: 11th April 2026

Deposit: £801

Unfurnished

Council Tax band: A

- Terraced house
- Lounge
- Dining room
- Kitchen
- 3 Bedrooms
- First floor bathroom
- Rear garden

Martin and co offer for rent this well-presented terraced house which offers comfortable living accommodation thoughtfully arranged over two floors. The property comprises 2 reception rooms and a kitchen to the ground floor with 3 generous bedrooms and a bathroom to the first floor. Outside the property has a private garden which offers a tranquil outdoor retreat, ideal for personal enjoyment or entertaining guests. Parking is available on the street. The property is situated in the Hanley area close to local amenities, convenient transport links and a diverse range of shops, restaurants, and leisure facilities.







Score	Energy rating	Current	Potential
92+	A		
81-91	B		84 B
69-80	C		
55-68	D		
39-54	E	47 E	
21-38	F		



Stoke on Trent (Belvoir)

Albion Street • Stoke-On-Trent • ST1 1QH

T: • E:

<http://www.martinco.com>



Accuracy: References to the Tenure of a Property are based on information supplied by the Seller. The Agent has not had sight of the title documents. A Buyer is advised to obtain verification from their Solicitor. Items shown in photographs including but not limited to carpets, fixtures and fittings are not included unless specifically mentioned within the sales particulars. They may however be available by separate negotiation. Buyers must check the availability of any property and make an appointment to view before embarking on any journey to see a property. No person in the employment of the agent has any authority to make any representation about the property, and accordingly any information given is entirely without responsibility on the part of the agents, sellers(s) or lessors(s). Any property particulars are not an offer or contract, nor for part of one. **Sonic / laser Tape:** Measurements taken using a sonic / laser tape measure may be subject to a small margin of error. **All Measurements:** All Measurements are Approximate. **Services Not tested:** The Agent has not tested any apparatus, equipment, fixtures and fittings or services and so cannot verify that they are in working order or fit for the purpose. A Buyer is advised to obtain verification from their Solicitor or Surveyor.