



Myrtle Road, W3

£1,150,000

A stunning two/three bedroom Victorian house, located in the heart of Poets Corner and presented in immaculate condition. The property offers the potential to extend into the loft subject to the usual consents and is offered with no onward chain.



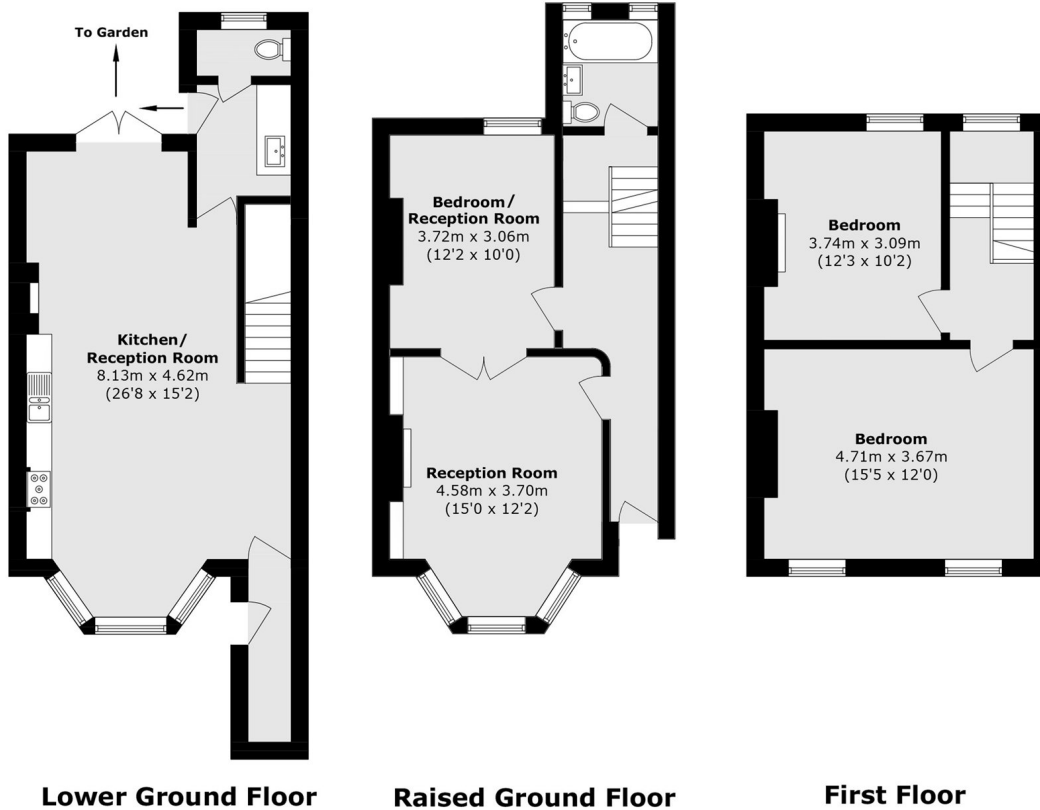
This Victorian home offers in excess 1200 sq.ft accommodation split over three floors and consists of a bay fronted reception room on the raised ground floor level, with the option for a double reception room or another bedroom. On the first floor is two large double bedrooms, served by a family bathroom on the level below.

The lower ground level offers a striking modern open plan kitchen layout with direct access to your west facing garden, combining classic period features and contemporary family living.

Myrtle Road is within 500 metres of the shops and amenities of Churchfield Road and Acton Central (overground) station. It is also just half a mile from Acton Main Line station for the Elizabeth Line.

- Three Bedrooms • Poets Corner • No Onward Chain •
 - Split Over Three Floors • Immaculate Condition • Close to Transport •
-





Total Area (approx.): 115.4 sq. m (1242.1 sq. ft)

Robertson Smith & Kempson Acton Sales
137 High Street, Acton,
London, W3 6LY
020 8896 3996
actonsales@robertsonsmithandkempson.co.uk

Energy Rating: D. We aim to make our particulars both accurate and reliable. However they are not guaranteed; nor do they form part of an offer or contract. If you require clarification on any points then please contact us, especially if you're traveling some distance to view. Please note that appliances and heating systems have not been tested and therefore no warranties can be given as to their good working order.