



Hyde Apartments  
120 Battersea Bridge Road, SW11

CHESTERTONS





This immaculate two-bedroom, two-bathrooms apartment with all new furniture available next to Battersea Park.

Located on the 4th floor of the newly completed Hyde Apartments, this beautifully decorated flat enjoys its own private balcony with excellent dual aspect views towards the city and Battersea Park.

The apartment benefits from a bright dual aspect open plan kitchen-reception, a large double bedroom, a modern kitchen and is fitted hard floors throughout. Furthermore, the apartment is fitted with Air Cooling, underfloor heating and has a fob security.

Hyde Apartments is excellently located close to both The River Thames and Battersea Park. Also nearby is Chelsea with a short walk over Battersea Bridge. You have plentiful amenities in the surrounding area including selection of gyms and leisure centres. Right on your doorstep you have an assortment of cafes, restaurant and local shops, providing everything you might need within a few minutes' walk.

---

### £3,000 pcm

Additional tenant charges apply (fees apply to non-AST tenancies only)

Tenancy Agreement Fee: £300

References per Tenant/Guarantor: £60

Inventory check (approx. £100 – £250 inc. VAT)

[chestertons.co.uk/property-to-rent/applicable-fees](http://chestertons.co.uk/property-to-rent/applicable-fees)

---

**Minimum Term:** 12 months  
**Deposit Required:** £3,461.54  
**Local Authority:** London Borough of Wandsworth  
**Council Tax Band:** E  
**EPC Rating:** To be confirmed  
**Furnished**

### *Chestertons Battersea Park & Nine Elms Lettings*

62-64 Battersea Bridge Road

London

SW11 3AG

[batterseapark@chestertons.co.uk](mailto:batterseapark@chestertons.co.uk)

02030408269

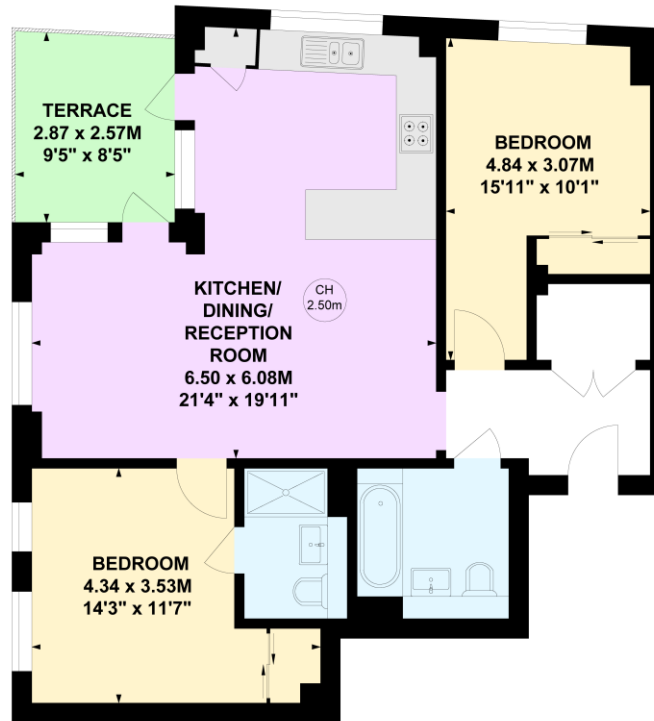
[chestertons.co.uk](http://chestertons.co.uk)

# Battersea Bridge Road, SW11

Approximate gross internal area

74.62 sq m / 803 sq ft

Key :  
CH - Ceiling Height



## Fourth Floor

This plan is not to scale and must be used as layout guidance only. All measurements and areas are approximate and should not be relied upon to provide accurate information. This plan must not be relied upon when making property valuations, design considerations or any other such relevant decisions. We accept no responsibility or liability (whether in contract, tort or otherwise) in relation to any loss whatsoever arising from or in connection with any use of this plan or the adequacy, accuracy or completeness of it or any information within it.

Chesterton UK Services Limited trading as Chestertons for themselves and for the vendor of this property whose agents they are, give notice that (i) these particulars do not constitute any part of an offer or contract, (ii) all statements contained within these particulars are made without responsibility on the part of Chestertons or the vendor, (iii) whilst made in good faith, none of the statements contained within these particulars are to be relied upon as a statement or representation of fact, (iv) any intending purchasers must satisfy themselves by inspection or otherwise as to the correctness of each of the statements contained within these particulars, (v) the vendor does not make or give either Chestertons or any person in their employment any authority to make or give representation or warranty whatsoever in relation to this property. Wide angle lenses may be used. ©Copyright Chestertons | Chesterton Global Ltd | Registered Office 40 Connaught Street, Hyde Park, London W2 2AB Registered Company Number 05334580.



This paper is  
100% recyclable