



Grenadiers Drive, Chatteris, Cambs, PE16 6TW

No Upward Chain! - Mid Terraced House - 2 Bedrooms - Kitchen & Lounge/Diner - Conservatory - Bathroom - Low Maintenance Rear Garden - Driveway & Allocated Parking - EPC Rating: C - Call To View (01354) 696700

£185,000



Ground Floor

Lounge/Dining Room
4.01m (13'2") x 3.82m (12'6")
Double glazed entrance door and window to front, double glazed window to front, two radiators, laminate flooring and stairs to first floor.

Kitchen
3.04m (10') x 1.82m (6')
Fitted with a matching range of base and eye level units with worktop space over, composite sink with tiled splashbacks, integrated fridge/freezer, plumbing for dishwasher, built-in electric oven, built-in four ring electric hob with extractor hood over, double glazed window to rear, radiator and laminate flooring.

Conservatory
Laminate flooring, sliding doors to enclosed rear garden.

First Floor

Landing
Airing cupboard and doors to:

Bedroom 1
3.82m (12'6") x 2.88m (9'5")
Two double glazed windows to front, two built in wardrobes, single radiator and laminate flooring.

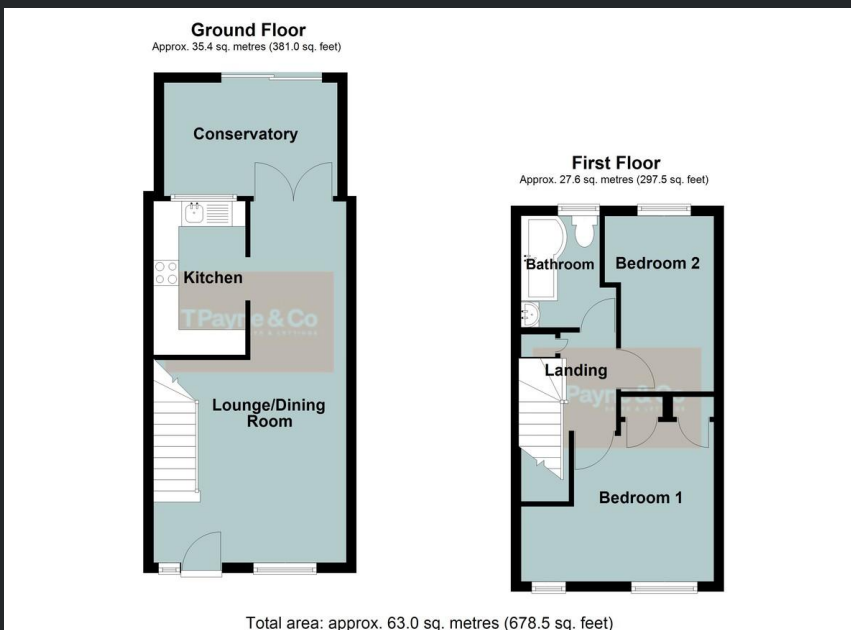
Bedroom 2
3.48m (11'5") x 1.84m (6')
Double glazed window to rear and laminate flooring.

Bathroom
Fitted with three piece suite with comprising, P shaped panelled bath with hand shower attachment and separate shower over with glass screen, wash hand basin with storage under and low-level WC, part tiled walls, double glazed window to rear, vinyl flooring and single radiator.

Outside

There is driveway parking to the front for one vehicle with 2 allocated parking spaces to the rear. The enclosed, low maintenance, rear garden is laid to artificial grass with patio area, rear gate access and a timber shed.

EPC Rating: C



Call to arrange a viewing **01354 696700** **T Payne & Co**
SALES & LETTINGS

Agents Notes: Whilst every care has been taken to prepare these sales particulars, they are for guidance purposes only. All measurements are approximate and for general guidance purposes only and whilst every care has been taken to ensure their accuracy, they should not be relied upon and potential buyers are advised to recheck the measurements.