



Halfway Street

Sidcup
DA15 8DQ

Freehold

Spacious 4 bedroom family home
Separate annexe for extended family or rental potential
Landscaped wraparound garden
Convenient for both Sidcup & New Eltham stations
Close to local shops and sought after schools
Two spacious reception rooms
Rear kitchen/diner





FULL DESCRIPTION

Offered for sale is this spacious four-bedroom family home set on a substantial plot, complete with a self-contained rear annexe. Ideal for extended family living, the annex would perfectly suit parents, older children, or even provide rental potential.

The property is well presented throughout and offers generous living accommodation, including a large entrance hall, two spacious reception rooms, a rear kitchen/diner, utility room, and downstairs shower room. To the first floor are four bedrooms, a family bathroom, and separate WC.

Externally, the landscaped wrap-around rear garden features a koi pond and a detached outbuilding currently used as a bar/games room, creating an excellent entertaining space. There is also off-street parking for several vehicles. The separate annexe benefits from its own living area, kitchen, bathroom, and private garden space.

Conveniently located close to local shops, sought-after schools, and both Sidcup and New Eltham train stations, this is a fantastic opportunity to acquire a large family home in a popular location. Internal viewing is highly recommended to fully appreciate the space and versatility on offer.

Directions

From our Sidcup office turn right. At the traffic lights proceed straight across into Halfway Street. Closest Stations: New Eltham (0.68 mi) Sidcup (0.90 mi) Falconwood (1.28 mi) Closest Schools: Dulverton Primary School (0.42 mi) Our Lady of the Rosary Catholic Primary School (0.5 mi) Leigh Stationers Academy (0.89 mi) Chislehurst and Sidcup Grammar School (1 mi)





Local Authority
Council Tax Band
EPC Rating

Bexley London Borough Council

E
C

Halfway Street, Sidcup, DA15

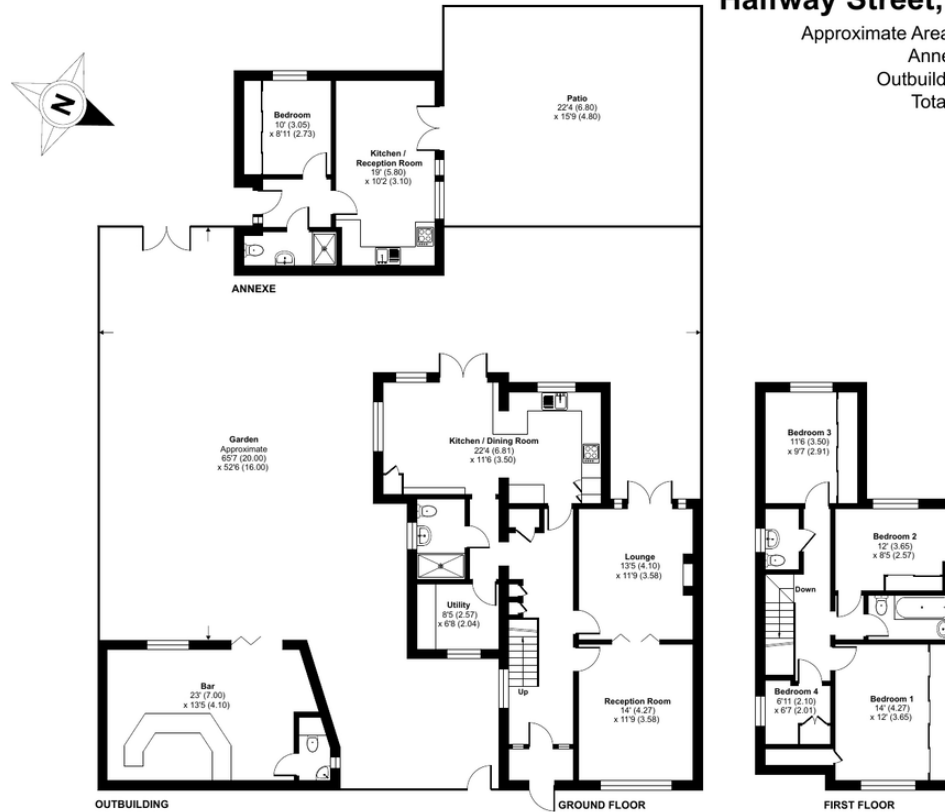
Approximate Area = 1571 sq ft / 145.9 sq m

Annexe = 361 sq ft / 33.5 sq m

Outbuilding = 293 sq ft / 27.2 sq m

Total = 2225 sq ft / 206.7 sq m

For identification only - Not to scale



Floor plan produced in accordance with RICS Property Measurement Standards incorporating International Property Measurement Standards (IPMS2 Residential). © rnhcom 2026. Produced for Drewery. REF: 1458857

Drewery Property Consultants
128 Station Road
Sidcup
Kent
DA15 7AF

Contact
020 8269 6605
info@drewery.co.uk
www.drewery.co.uk

Agents Note: Whilst every care has been taken to prepare these particulars, they are for guidance purposes only. All measurements are approximate and are for general guidance purposes only and whilst every care has been taken to ensure their accuracy, they should not be relied upon and potential buyers/tenants are advised to recheck the measurements.