



## Dove Mews, SW5

**£500** Per week

A well-presented one-bedroom apartment is available to let, positioned on a tranquil cobbled street. The property features a private entrance, modern finishes throughout, and an exclusive, secluded outdoor courtyard.

Dove Mews is a peaceful residential enclave situated within easy reach of Gloucester Road, which provides an extensive selection of cafés, shops, and restaurants. The property enjoys excellent transport links, with Gloucester Road Underground Station located nearby.

### Features

- One Bedroom
- Newly Refurbished
- Wood Floors
- Own Entrance
- Cobbled Mews
- Excellent Location

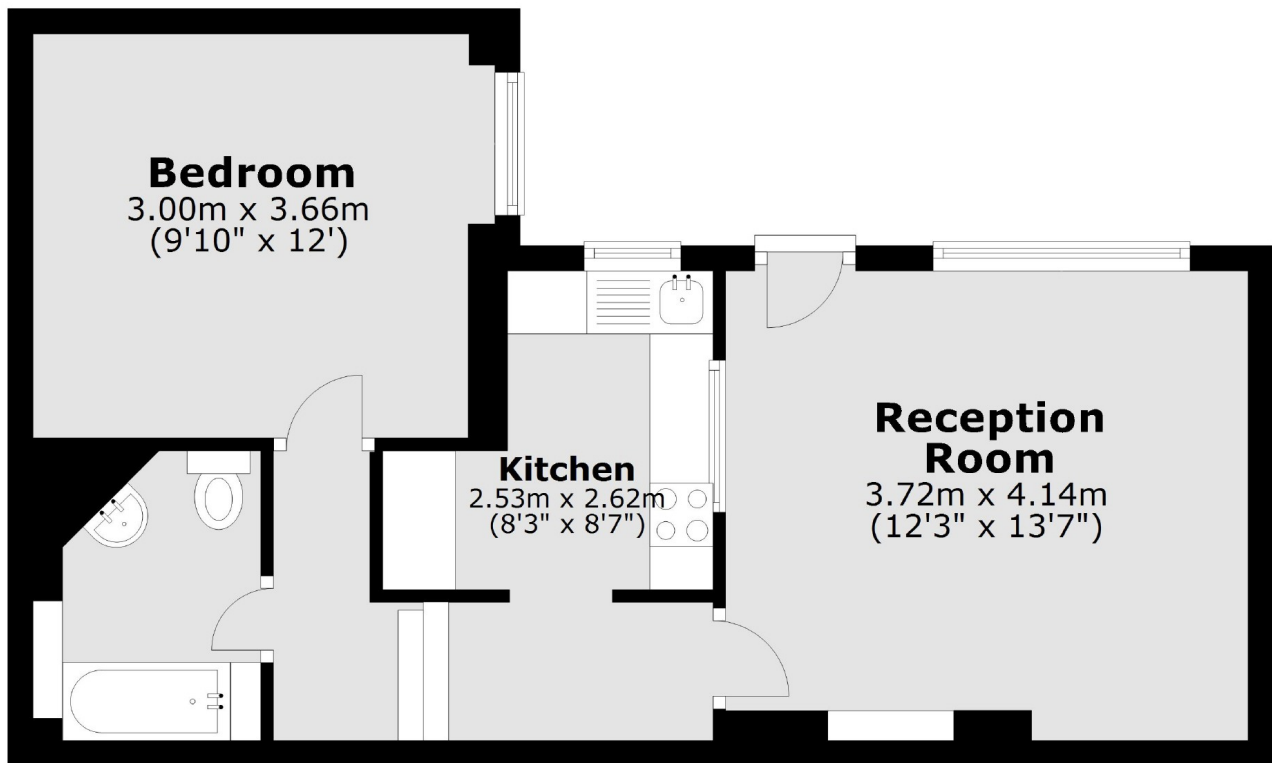


**Dove Mews, SW5**





## **Lower Ground Floor**



Total area: approx. 42.7 sq. metres (459.9 sq. feet)