

Flat 24, Harper House Harper House, Slade Lane, Levenshulme, Manchester, M19 2AF



JP & Brimelow
ESTATE AGENTS

Offers In The Region Of £130,000

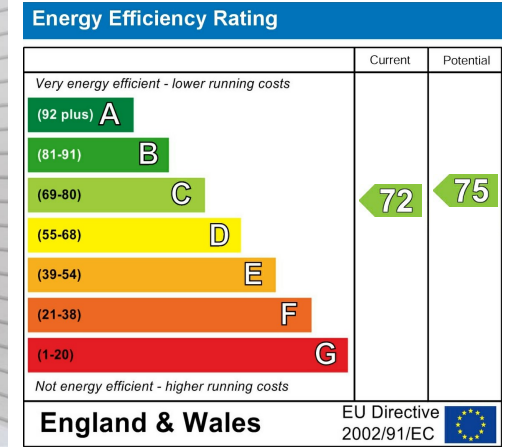


VIDEO TOUR AVAILABLE A spacious ONE BEDROOM first-floor apartment set within a popular purpose-built development in Levenshulme, conveniently located just off Albert Road. The property benefits from excellent transport connections, providing easy access to both Manchester city centre and Manchester Airport. The well-designed accommodation comprises a communal entrance hallway, a private entrance hall with practical storage, a bright lounge/dining room, a fitted kitchen, and a three-piece shower room. Additional features include electric underfloor heating, well-maintained communal gardens, and residents' parking. Ideally situated, the apartment is just a ten-minute walk from the wide range of shops, restaurants, cafés, and local amenities available along Stockport Road. Early internal viewing is strongly recommended to fully appreciate all that this property has to offer.



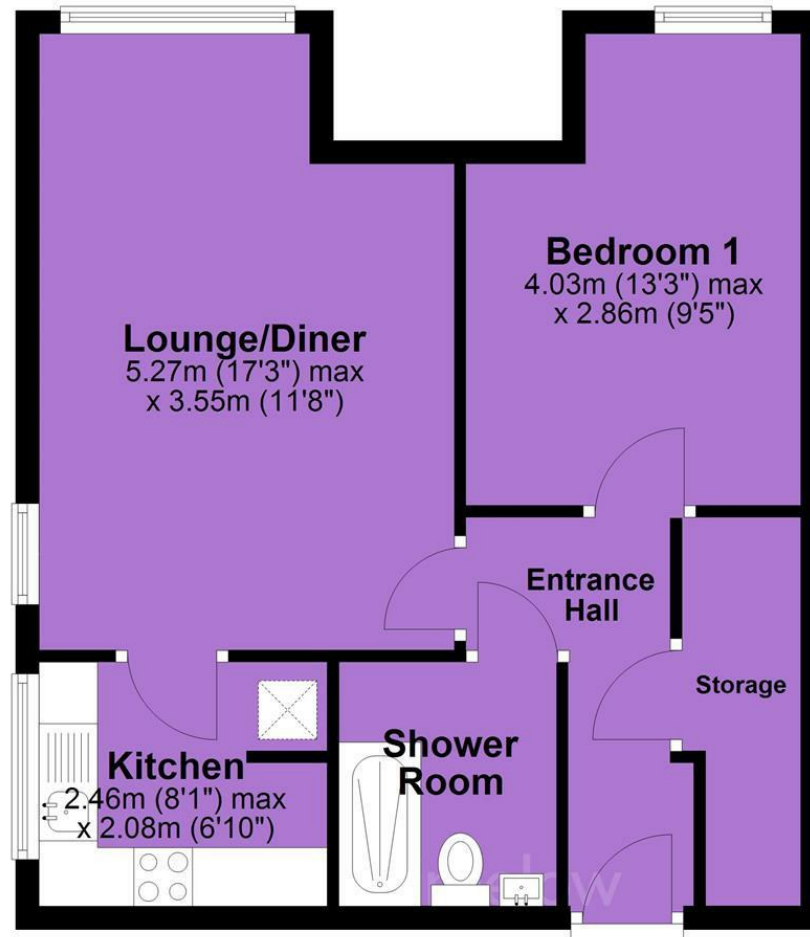


EPC Chart



Tenure: **Leasehold** Council Tax Band: **A**

First Floor



JP & Brimelow Estate Agents Ltd
430 Barlow Moor Road, Manchester, M21 8AD
Tel: 0161 8822233
E: sales@jpbrimelow.co.uk www.jpandbrimelow.co.uk



JP & Brimelow
ESTATE AGENTS

NOTICE: JP & Brimelow Estate Agents Ltd for themselves and for the vendors or lessors of this property whose agents they are give notice that:

- (i) the particulars are set out as a general outline only for the guidance of intending purchasers or lessees, and do not constitute, nor constitute part of, an offer or contract;
- (ii) all descriptions, dimensions, references to the condition and necessary permissions for use and occupation, and other details are given in good faith and are believed to be correct but any intending purchasers or tenants should not rely on them as statements or representations of fact but must satisfy themselves by inspection or otherwise as to the correctness of each of them;
- (iii) no person in the employment of JP & Brimelow Estate Agents Ltd has any authority to make or give any representation or warranty whatever in relation to this property.

jpandbrimelowstateagents

@jpandbrimelow