



## Parklands, KT5

£375,000

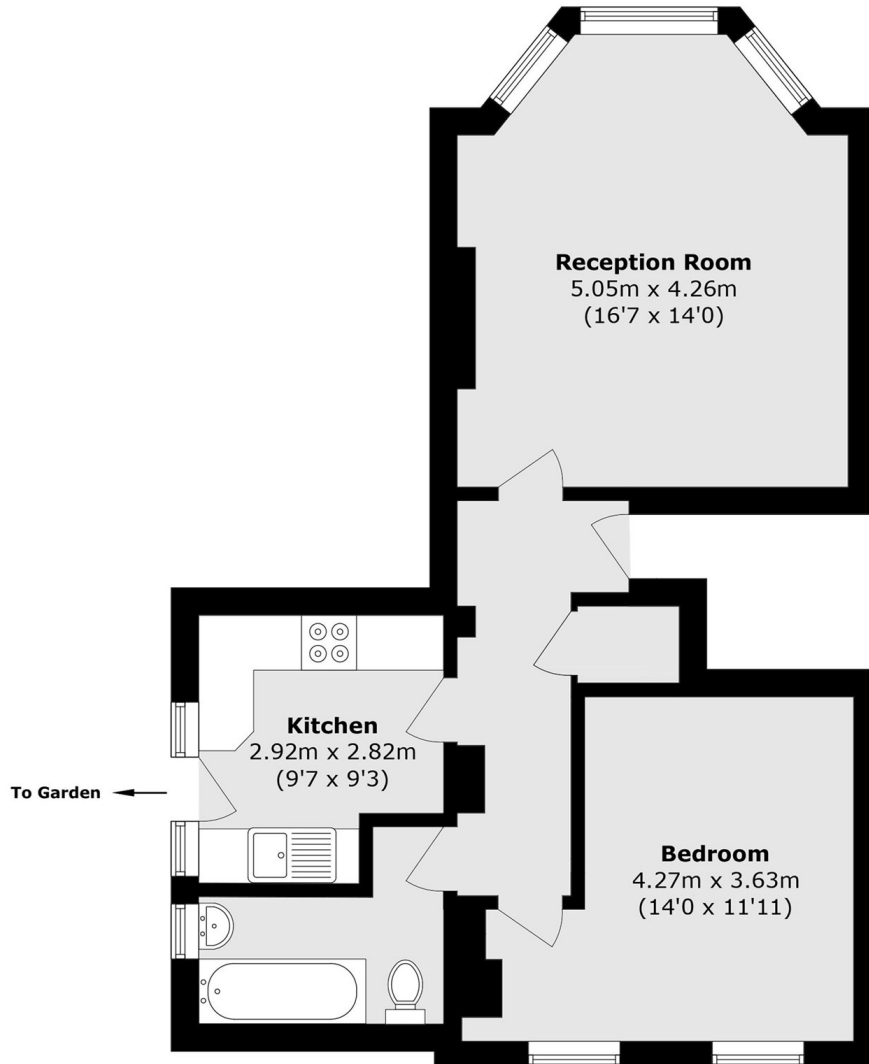
As it stands this is a one double bedroom period conversion apartment set in an imposing detached Victorian Villa. Planning has been approved to convert this apartment into a two double bedroom apartment with a private courtyard and have off street driveway parking. (Planning application reference 23/03018/FUL). Please enquire within for further details.

Parklands is a peaceful sought after road just half a mile from Surbiton Station and high street with its fast and direct trains into London Waterloo in as fast as 16 minutes, and its selection of shops, cafés, bars and restaurants.

### Features

- One Double Bedroom
- Ground Floor
- No Onward Chain
- Driveway Parking
- Private Courtyard
- Planning Application Approved

# Parklands, Surbiton, KT5



Total area (approx.): 52.7 sq. m (567.2 sq. ft)