

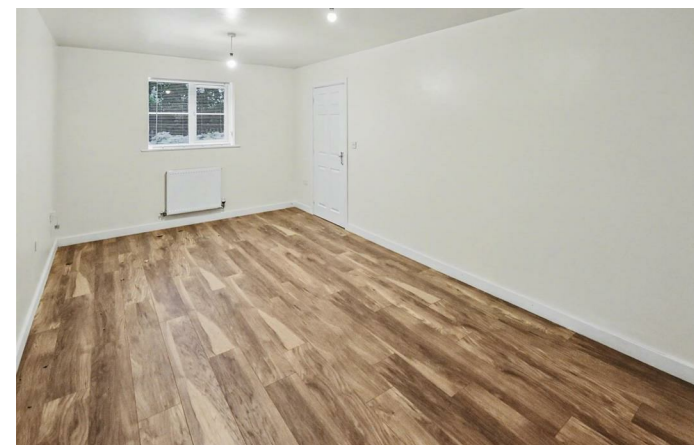


15 Dewar Close
Corby, Northants NN17 4AH



Simpson West

Simpson West Lettings are delighted to offer to the rental market this well presented three bedroom detached house situated on the popular Rockingham Court development, providing easy access to the Earlestone Industrial Areas. The property benefits hall, guest cloakroom, fitted kitchen/diner with built in oven and hob, patio doors leading into rear garden and a separate lounge. Upstairs there is a master bedroom with built in wardrobes and en-suite, two further bedrooms and a bathroom. Outside is a rear garden and driveway and garage. Energy Rating C. Council tax band C.



£1,195 PCM

 3  2  1



FLOORPLAN COMING SOON



Energy Efficiency Rating		
	Current	Potential
<i>Very energy efficient - lower running costs</i>		
(92 plus) A		
(81-91) B		
(69-80) C		
(55-68) D		
(39-54) E		
(21-38) F		
(1-20) G	1	1
<i>Not energy efficient - higher running costs</i>		
England & Wales	EU Directive 2002/91/EC	



When you buy with Simpson West, you know **you'll be in safe hands**. From the moment you walk through our doors, we'll make you **feel truly welcome**. Our sales consultants and financial advisors will take you through **every step of the process**, offering **free expert advice** along the way, from help choosing the right mortgage and insurance through to finding your conveyancer. And if you need help selling your home too, **with over 20 years of local experience, you can trust us to get you moving**.



**Simpson
West**

Making Every
Journey Personal



01536 202007

info@simpsonwest.co.uk

<https://www.simpsonwest.co.uk/>

64 Corporation Street, Corby, Northants, NN17 1NH