



Muir Road, E5

£395,000

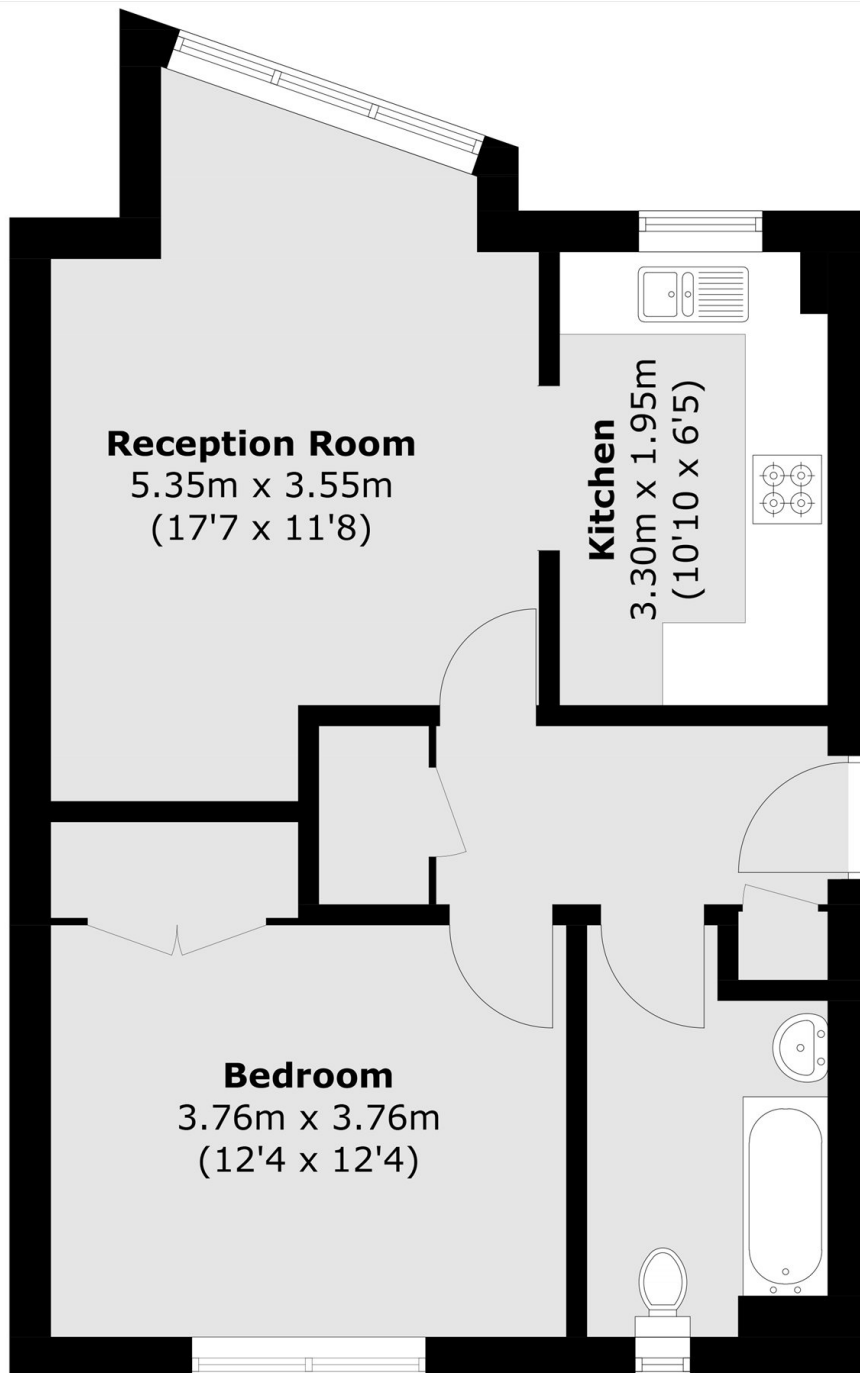
A top floor one bedroom purpose built apartment located by Hackney Downs Park. The property measures of 500 sq ft and has been recently renovated throughout by its current owner with wooden flooring, Claybrook tiles and bespoke plywood kitchen.

Situated between Rectory Road and Clapton Overground stations, which are both less than half a mile away. Hackney Downs, Millfields Park and Stoke Newington Common are also within walking distance.

Features

- One Double Bedroom
- Top Floor
- Over 500 sq ft
- Purpose Built
- Recently Renovated
- Hackney Downs Park

Muir Road, London, E5



Total area (approx.): 46.9 sq. m (504.8 sq. ft)