



**11 Maple Close**  
Storth Lane, DE55 3BH  
£1,750 PCM



## 11 Maple Close

Storth Lane, DE55 3BH

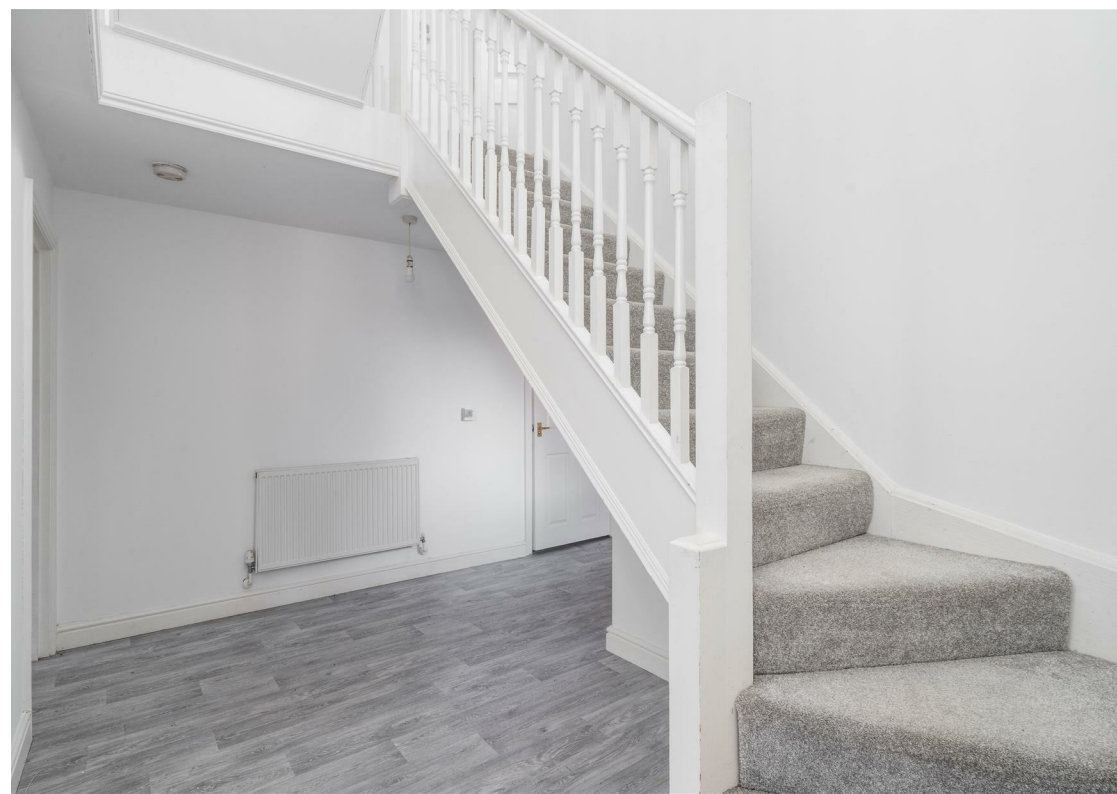
A spacious six double bedroom family home located in the well connected village of South Normanton.

The ground floor offers two generous reception rooms, including a bay-fronted living room and a separate dining room, along with a fully fitted kitchen featuring classic shaker-style units and separate utility room.

To the first floor are four good sized bedrooms, with 2 en-suites and an additional family bathroom. The second floor provides two further double bedrooms and an additional shower room.

Externally, the property benefits from driveway parking, an integral garage and an enclosed rear garden.

### Rental information





## Floor Plan



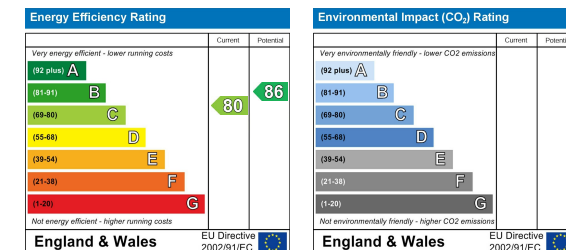
## Area Map



## Viewing

Please contact our Chesterfield Office on 01246 567540 if you wish to arrange a viewing appointment for this property or require further information.

## Energy Efficiency Graph



These particulars, whilst believed to be accurate are set out as a general outline only for guidance and do not constitute any part of an offer or contract. Intending purchasers should not rely on them as statements of representation of fact, but must satisfy themselves by inspection or otherwise as to their accuracy. No person in this firm's employment has the authority to make or give any representation or warranty in respect of the property.



131 Chatsworth Road, Chesterfield, Derbyshire, S40 2AP  
T: 01246 567540

E: info@dalesandpeaks.co.uk  
www.dalesandpeaks.co.uk