

# DUKE ROAD, W4

£499,950

Share of Freehold

2

2

1

E

## PROPERTY FEATURES

- Private Entrance
- Two Double Bedrooms
- Two Bathrooms
- Glebe Estate - Heart of Chiswick
- Share of Freehold
- Almost 600sqft of Living Space

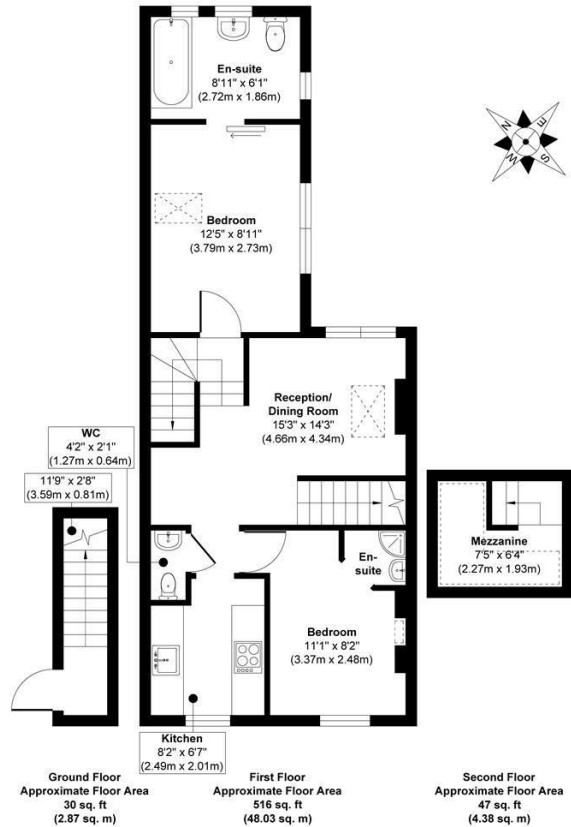


ALEXANDER STEER  
Estate Agents



## PROPERTY FEATURES

A spacious, two bedroom, Victorian maisonette situated in the highly sought after Glebe Estate. This excellent flat benefits from brilliant ceiling height in the living space and is perfect for those looking for their first home, a london bolthole or an investment in the heart of Chiswick.



**Approx. Gross Internal Floor Area 593 sq. ft / 55.28 sq. m**

Illustration for identification purposes only, measurements are approximate, not to scale.  
Produced by Elements Property



@ALEXANDERSTEERPROPERTY



**ALEXANDER  
STEER**

0203 822 0111

hello@alexandersteer.co.uk

158a Shepherds Bush Road, Hammersmith, London,  
W6 7PB

All sizes are approximate. The Agent has not tested any apparatus, equipment, fixtures and fittings, or services and so cannot verify that they are in working order or fit for the purpose. A buyer is advised to obtain verification from their Solicitors or Surveyor. Photographs are for illustration purposes only and may depict items, which are not for sale or included in the sale price. References to tenure of a property are based upon Information supplied by the vendor. The agent has not had sight of the title documents, a buyer is advised to obtain verification from their solicitor.

Money Laundering Regulations 2003: Intending purchasers will be asked to produce identification, documentation at a later stage and we would ask for your co-operation in order that there will be no delay in agreeing the sale. These particulars are intended to give a fair description of the property only and are in no way guaranteed, nor do of any contract. They are issued on the express condition that all negotiations are conducted through Alexander Steer Estate Agents. All subject to contract and to being unsold.