



# Marehay Road, Ripley

Four-bedroom, three-storey  
mid-terrace house  
available to buy through  
shared ownership



A home of your  
own at a price  
you can afford



ncha

# Specifications

## Kitchen

- Fitted modern kitchen
- Integrated oven and hob
- Stainless steel extractor hood
- Contemporary mixer taps
- Vinyl flooring

## Bathroom

- White suite with chrome fittings
- Tiling to ceiling around the bath
- Shower over bath
- Glass shower screen
- Vinyl flooring

## Heating

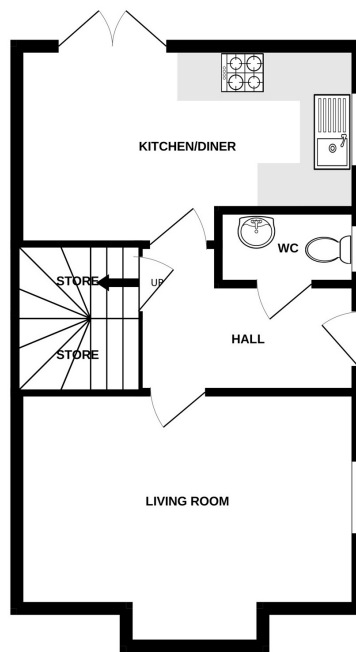
- Gas fired central heating
- Thermostatic radiator valves
- Double glazed windows

## External

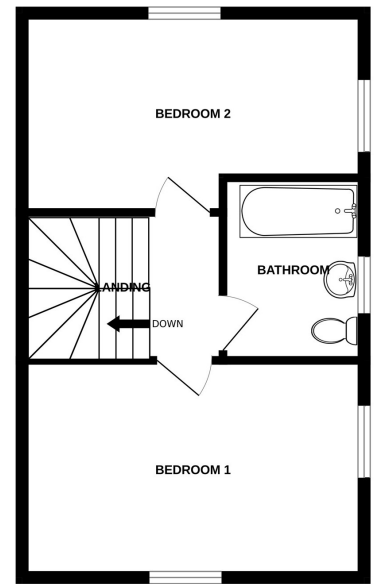
- EV charger
- Allocated off-street parking
- Enclosed rear garden

## Decoration

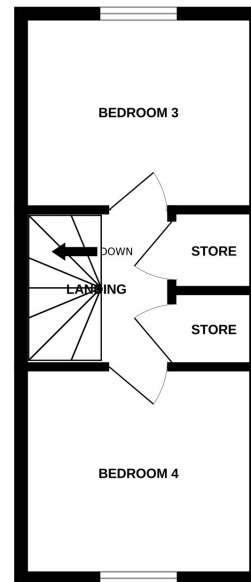
- White emulsion walls and ceilings
- White gloss painted woodwork



Ground floor



First floor



Second floor

# Energy assessment

- Predicted energy assessment – B

# Key dimensions

Room	Dimensions
Living room	4567mm x 2687mm
Kitchen/diner	4567mm x 2770mm x 2319mm
Bedroom 1	4567mm x 2687mm
Bedroom 2	4567mm x 2336mm
Bedroom 3	3196mm x 2770mm
Bedroom 4	3204mm x 2687mm

Any measurements quoted are approximate and must be checked on site and against the layout, which may vary due to unforeseen circumstances. Floor plans may be mirror handed. These details have been produced for illustrative purposes only and does not form any part of a contract or constitute an offer. Actual specification may vary from that shown in floor plan.

## How to find us

The development is located on Marehay Road, Ripley. If using a SatNav, the postcode is DE5 8LB.

## Buying more shares

The homes are sold on a standard shared ownership lease, so you can purchase more shares to 100% and acquire the freehold.



0345 650 1204



nchasales@ncha.org.uk



www.ncha.org.uk



@NCHASalesTeam



@NCHASales