

# Harper & Co

Estate Agents Ltd

<https://www.harperandcoestateagents.co.uk>



## Raven Lane

Crooksbar, Norton, TS20 1LZ

For Sale With No Onward Chain. Delightfully Positioned In The Tranquil Cul-De-Sac Of Raven Lane, Crooksbar, This Exceptional Detached House Offers A Unique Blend Of Comfort And Style. With Four Spacious Bedrooms And Two Well-Appointed Bathrooms, This Property Is Perfect For Families Seeking A Harmonious Living Environment.

As You Enter, You Are Greeted By Three Inviting Reception Rooms, Providing Ample Space For Relaxation And Entertainment. The Stunning Full-Width Orangery Enhances The Living Area, Flooding The Home With Natural Light And Creating An Ideal Setting For Gatherings Or Quiet Evenings. Additionally, A Large Conservatory Extends From The Lounge, Seamlessly Connecting Indoor And Outdoor Living, And Leading To A Beautifully Landscaped Garden.

The Garden Is A True Highlight, Featuring An Artificial Lawn That Requires Minimal Maintenance, Allowing You To Enjoy The Outdoors Without The Hassle. Thoughtfully Designed Seating Areas Invite You To Unwind And Soak In The Serene Surroundings, Making It A Perfect Retreat For Family And Friends.

**Offers in the region of £550,000**

# Raven Lane

Crooksbar, Norton, TS20 1LZ



- A Unique Four Bedroom Detached Family Home In A Popular Location
- Plenty Of Off-Road Parking & Garage/Storage With Electric Roller Door
- Cul-De-Sac Location, Not Overlooked & Offers A High Level Of Privacy
- Certainly One Of A Kind & Offers Lots Of Potential For Further Expansion (STPP)
- Stunning Full Width Orangery Creating Additional Living Space & An Office
- Benefiting A Utility Room & Essential Ground Floor Cloakroom W.C
- Separated Side Garden With Pet Run & Surrounded By Various Trees
- Large Conservatory Off The Lounge Leading To The Garden & Outdoor Areas
- Good-Sized Lounge With Sliding Glass Doors & Separate Dining Area
- Landscaped Garden With Artificial Lawn, Seating Areas & Hot Tub Included

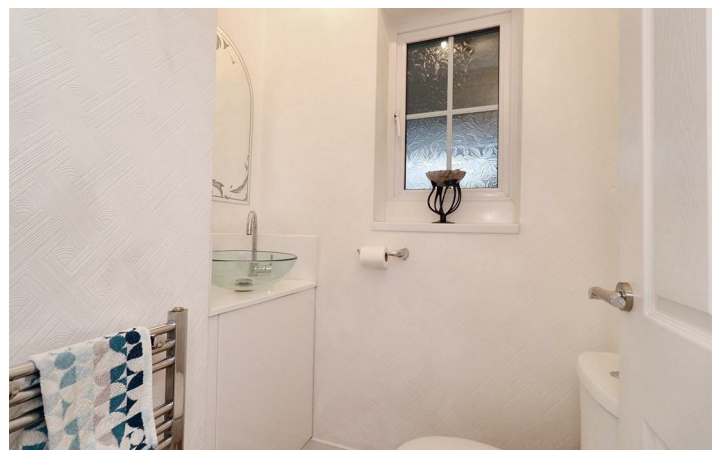
## Location

## Note

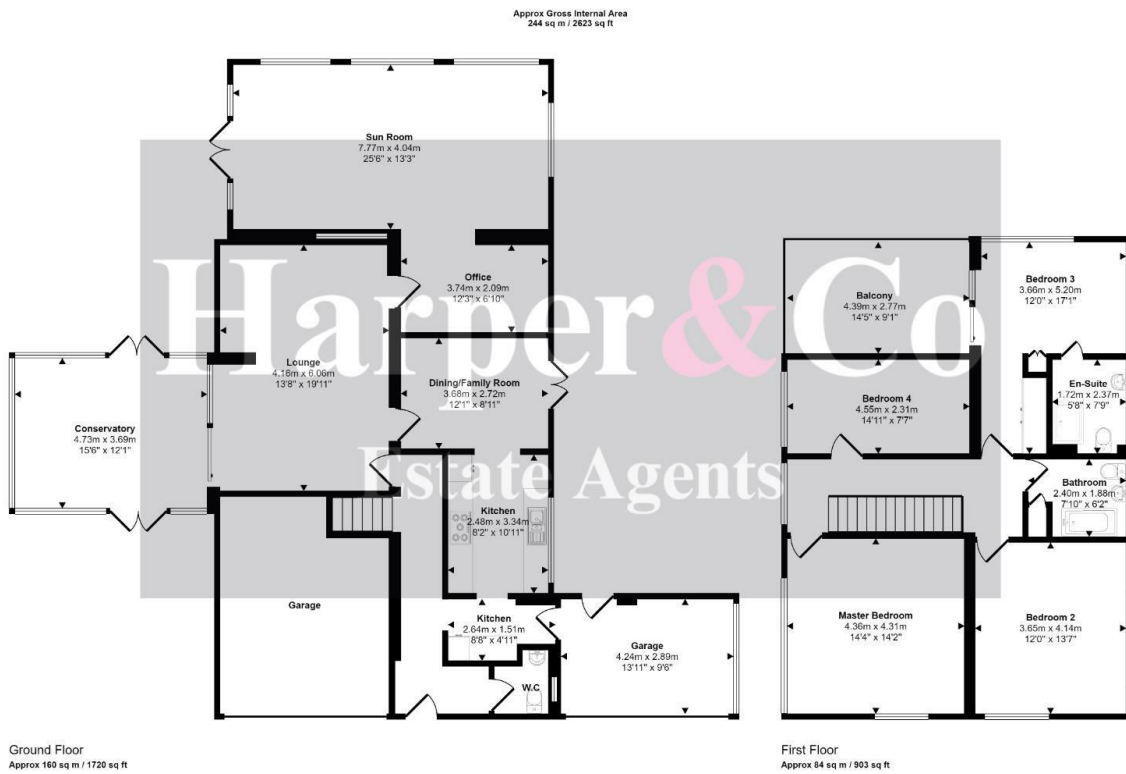
## Disclaimer



## Directions



# Floor Plan



This floorplan is only for illustrative purposes and is not to scale. Measurements of rooms, doors, windows, and any items are approximate and no responsibility is taken for any error, omission or mis-statement. Some of items such as bathroom suites are representations only and may not look like the real items. Made with Mede Snappy 360.

These particulars, whilst believed to be accurate are set out as a general outline only for guidance and do not constitute any part of an offer or contract. Intending purchasers should not rely on them as statements of representation of fact, but must satisfy themselves by inspection or otherwise as to their accuracy. No person in this firm's employment has the authority to make or give any representation or warranty in respect of the property.

