

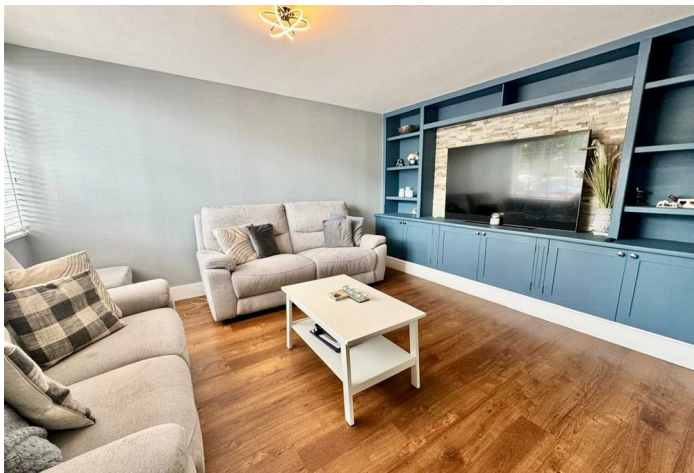


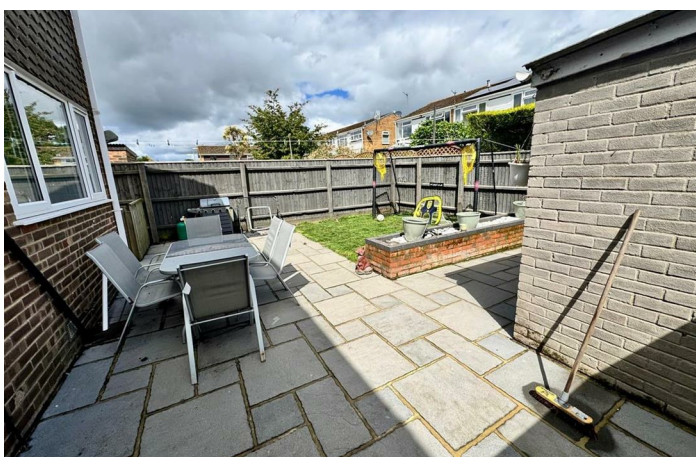
Roewood Road

Holbury, Southampton SO45 2JJ

- CLOSE TO SCHOOLS
- DOUBLE DRIVEWAY
- SEMI-DETACHED HOME
 - SPACIOUS ROOMS
 - GOOD SIZED GARDEN
- SOUGHT-AFTER LOCATION
 - MODERN KITCHEN
- PRIVATE REAR GARDEN & SHED
 - WALK TO SHOPS
- CLOSE TO NEW FOREST NATIONAL PARK

£295,000 Freehold





Location

Presented to the market in excellent condition is this lovely three bedroom, end-terrace home in the desirable area of Holbury.

Step inside to discover a thoughtfully arranged layout, comprising three generous bedrooms, a stylish family bathroom, and an additional separate WC for added practicality. The living areas are impressively presented, boasting ample natural light and finished to a high standard throughout.

To the front of the property, a spacious gated driveway provides parking for two cars. The end-terrace setting allows for extra privacy and a larger plot, offering further possibilities for outdoor enjoyment or future expansion.

This property promises an exceptional lifestyle in a vibrant yet peaceful location. To truly appreciate all that this home has to offer, arrange a viewing today.

Kitchen

The kitchen is beautifully presented with white cupboards and black countertops. It has a big window that looks out into the rear garden, allowing lots of natural light to brighten the space. It comfortably fits a dining room table in the corner of the room.

Living Room

The living room is nice and spacious, with ample storage space. It has a big window, looking out into the front of the property, which lets in lots of natural light. The whole space feels bright and airy, and perfect to relax in at the end of the day.

Bedroom 1

This double bedroom has ample of space for all your furniture. It has one big window looking onto the front of the property.

Bedroom 2

This bedroom has plenty of space for any furniture. It can fit a double bed, a desk and any other storage you may want. It has a large window looking onto the rear of the property.

Bedroom 3

This bedroom is the smallest and will comfortably fit a single bed, a desk and a wardrobe.

Bathroom

The family bathroom includes a toilet, sink, and bathtub with overhead shower.

WC

This conveniently located downstairs WC includes a toilet and sink.

Rear Garden

Good sized back garden with lots of patio space.

Front Garden

Large driveway at the front of the property with plenty of parking.



Local Authority **NFDC**
Council Tax Band **B**
EPC Rating **C**



Citrine Estates Office

7 High Street, Hythe, Southampton,
SO45 6AG

Contact

023 81980 023
christina@citrine-estates.co.uk
www.citrine-estates.co.uk

Agents Note: Whilst every care has been taken to prepare these particulars, they are for guidance purposes only. All measurements are approximate and for general guidance purposes only and whilst every care has been taken to ensure accuracy, they should not be relied upon and potential buyers/tenants are advised to recheck the measurements.