



Tall Pines, Plantation Road, Leighton Buzzard, LU7 3FW

£179,995



Tall Pines, Plantation Road, Leighton Buzzard, LU7 3L

- Rarely Available Property
- Secluded and Peaceful Location
- No Upper Chain
- Surrounded on All Sides by Open Woodland
- 17Ft Open Plan Living/Kitchen Area
- 18Ft Master Bedroom with Fitted Wardrobes
- Abundance of Off Road Parking Available
- Large, Well Managed Communal Woodland Gardens
- Share of Freehold with over 970 Years (Approx) on Lease
- Walking Distance to Rushmere Country Park



Floor Plan



Viewing

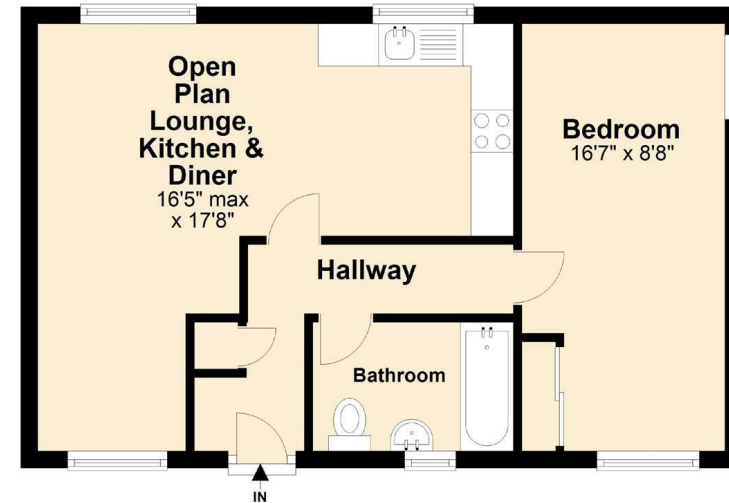
Please contact our Leighton Buzzard Office on 01525 377733.

If you wish to arrange a viewing appointment for this property or require further information.

IMPORTANT: Whilst we aim to make our details accurate and reliable, if there is any point of particular concern to you, please contact the office. The apparatus, equipment, fittings and services have not been checked and therefore it is in the purchaser's interest to establish the working condition of the appliance included. Personal items such as furnishings which may be shown in the photographs are not included in the asking price. No survey has been carried out by M & M Properties. Measurements have a tolerance of +/- 3". Please note that this floorplan has not been drawn to scale and is therefore for room layout purposes only. It does not constitute or form part of a contract. Doors may be hung in opposite directions.

First Floor

Approx. 443.1 sq. feet



Total area: approx. 443.1 sq. feet

27/29 Hockliffe Street, Leighton Buzzard - LU7 1EZ

Sales: 01525 377733 - Lettings: 01525 371997

sales@mandmproperties.co.uk - lettings@mandmproperties.co.uk

LOCAL PEOPLE WORKING FOR YOU