



143 ST MARGARETS ROAD LOWESTOFT, NR32 4HP

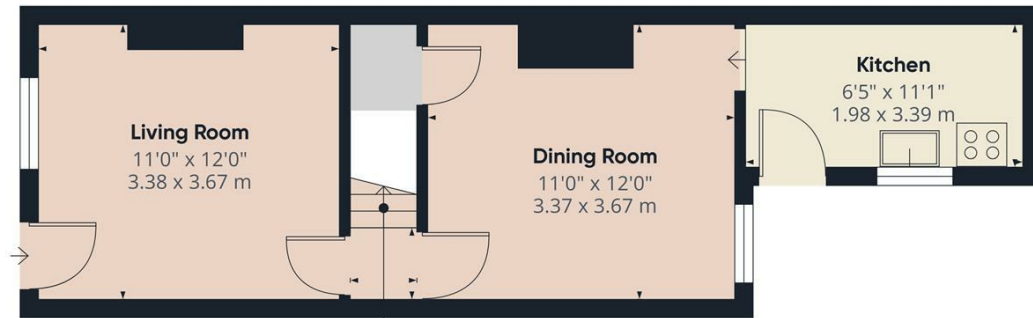
£170,000
FREEHOLD

**** £170,000 - £180,000 **** Located in the charming town of Lowestoft, this delightful mid-Victorian terrace house offers a perfect blend of modern living and classic character. With two spacious reception rooms, this home is ideal for both entertaining guests and enjoying quiet evenings in. The ground floor features a contemporary fitted kitchen that seamlessly connects to the dining room and lounge, creating a warm and inviting atmosphere.

As you ascend to the first floor, you will find two generously sized double bedrooms, providing ample space for relaxation and rest. The four-piece bathroom is a standout feature, offering both style and functionality, ensuring your daily routines are a pleasure.

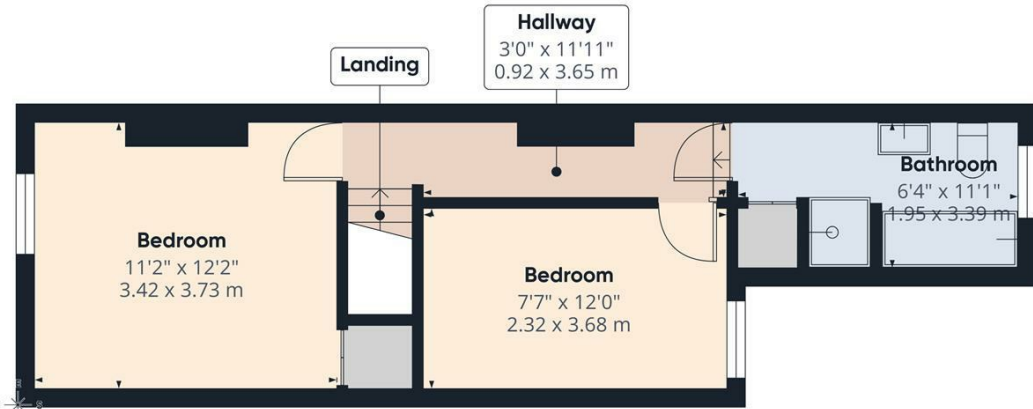
Step outside to discover a beautifully landscaped rear garden, designed for both aesthetics and ease of maintenance. The Indian sandstone patio is perfect for al fresco dining

**elisabeth
james**
sales



Ground Floor

Approximate total area⁽¹⁾
700 ft²
65.2 m²

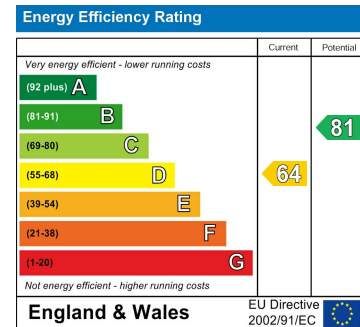


Floor 1

(1) Excluding balconies and terraces

Calculations reference the RICS IPMS 3C standard. Measurements are approximate and not to scale. This floor plan is intended for illustration only.

GIRAFFE 360



Agents Note: Whilst every care has been taken to prepare these particulars, they are for guidance purposes only. All measurements are approximate and are for general guidance purposes only and whilst every care has been taken to ensure their accuracy, they should not be relied upon and potential buyers/tenants are advised to recheck the measurements

Residential Sales
74 Pakefield Road
LOWESTOFT
Suffolk
NR55 0HX

01502 464955
hello@ej-homes.co.uk
<https://www.ej-homes.co.uk/>

elisabeth
James
sales