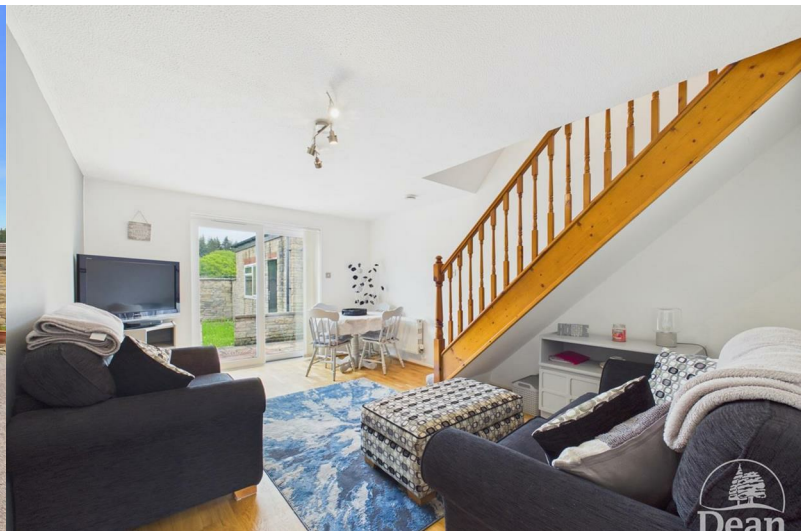




Speedwell

Mile End, Coleford, Gloucestershire, GL16 7NJ

£270,000



A beautifully presented and deceptively spacious home, offering modern accommodation and positioned within a popular residential development. The property benefits from a bright and airy open-plan lounge/dining room with French doors leading out to the garden, creating a fantastic space for both relaxing and entertaining. The contemporary fitted kitchen has been stylishly updated with high gloss units and integrated cooking appliances, while the welcoming entrance hallway adds to the home's practical layout.

Upstairs there are two generous double bedrooms, both enjoying excellent natural light, alongside a modern shower room finished with contemporary tiling and fittings. The property is well maintained throughout and ready to move straight into, making it an ideal purchase for first-time buyers, investors or those looking to downsize.

Outside, the home benefits from an enclosed low-maintenance garden with patio seating area & laid to lawn front & rear gardens, perfect for enjoying the warmer months. A particular feature of the property is the detached double garage providing excellent storage and practicality.

Situated in a convenient location, the property is within easy reach of local amenities, schools and transport links, whilst also being close to the beautiful woodland walks and countryside the Forest of Dean is renowned for.



Approached via UPVC double glazed front door into:

Entrance Hallway:
8'8" x 3'10" (2.65m x 1.17m)

Tiled flooring, double panelled radiator, BT point, power & lighting.

Lounge:
15'11" x 11'10" (4.86m x 3.62m)

Tiled flooring, double panelled radiator, BT point, power & lighting.

Kitchen:
8'10" x 8'0" (2.71m x 2.46m)

A modern fitted kitchen with a range of base, wall and drawer units, quartz worktops, AEG single oven, AEG 4 ring gas hob, extractor hood, sink with drainer unit, space & plumbing for washing machine, space for fridge/freezer, Worcester combi boiler, UPVC double glazed window, power & lighting.

First Floor Landing:
6'0" x 4'4" (1.83m x 1.33m)

Doors to both bedrooms & shower room, two storage cupboards, smoke alarm, power & lighting.

Bedroom One:
16'3" x 11'10" (4.96m x 3.62m)

Double aspect UPVC double glazed window, double panelled radiator, storage cupboard with hanging rail, loft access, power & lighting.

Bedroom Two:
12'10" x 11'10" (3.93m x 3.62m)

UPVC double glazed window, double panelled radiator, power & lighting.

Shower Room:
7'3" x 5'7" (2.21m x 1.71m)

UPVC double glazed window, double panelled radiator, tiled walling, panelled shower cubicle, step in shower with glass sliding doors, pedestal sink, W.C., lighting.

Outside:

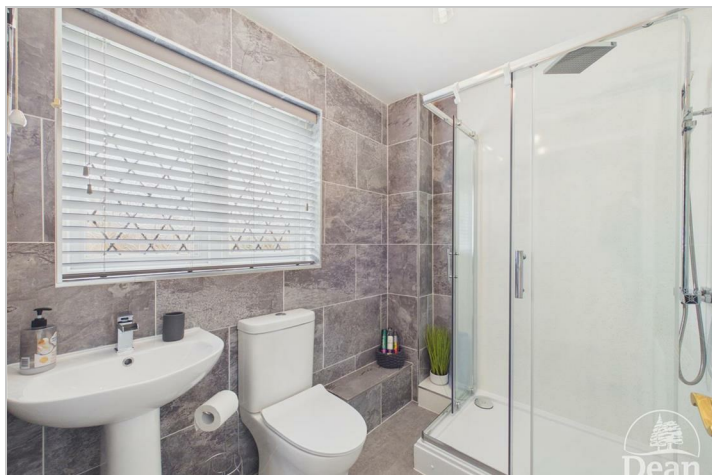
Externally, the property benefits from a low-maintenance yet well-proportioned outdoor space, with enclosed front and rear gardens offering a good degree of privacy. The rear garden enjoys a patio seating area with steps leading to a lawned section, bordered by attractive stone walling and mature hedging, creating a pleasant space to relax or entertain. To the front, the property is approached via a generous lawned garden with pathway access, while a nearby detached double garage further enhance the practicality of the home. The attractive stone façade and tucked-away

position within this modern development add to the property's overall appeal.

Double Garage:

19'5" x 18'3" (5.94m x 5.58m)

Roller door, power & lighting.



Consumer Notes: Dean Estate Agents Ltd have prepared the information within this website/brochure with care and co-operation from the seller. It is intended to be indicative rather than definitive, without a guarantee of accuracy. Before you act upon any information provided, we request that you satisfy yourself about the completeness, accuracy, reliability, suitability or availability with respect to the website or the information, products, services, or related graphics contained on the website for any purpose.

These details do not constitute any part of any Offer, Contract or Tenancy Agreement.

Photographs used for advertising purposes may not necessarily be the most recent photographs, although every effort is made to update photographs at the earliest opportunity. Any reliance you place on such information is therefore strictly at your own risk. All photographic images are under the ownership of Dean Estate Agents Ltd and therefore Dean Estate Agents retain the copyright. You must obtain permission from the owner of the images to reproduce them.

Tenanted Property – we are not always able to show the most recent condition of a property due to tenants' privacy and we may choose to show the photographs of the property when it was last vacant to at least allow clients some idea of the internal condition. Therefore, we would of course, urge you to view before making any decisions to purchase or rent the property and before any costs.

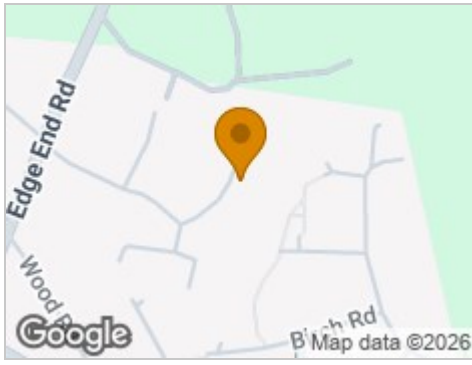
Energy Performance Certificates are supplied to us via a third party and we do not accept responsibility for the content within such reports.

PRC Certificates – Some ex-local authority properties have been repaired in recent years using the PRC Scheme wherein a certificate has been produced by a qualified property engineer. This certificate does not imply the suitability for a mortgage approval and you must satisfy yourself of the work carried out that may meet your lenders criteria.

As with leasehold property or new build development sites, you are likely to be responsible for a contribution to management charges and/or ground rent or a contribution to the development service charge. Please enquire at the time of viewing.

You may also incur fees for items such as leasehold packs and, in addition, you will also need to check the remaining length of any lease before you complete a mortgage application form. Please ask a member of our team for any help required before committing to purchase a property and incurring expense.

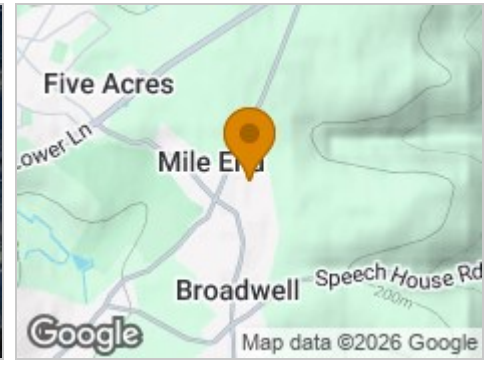
Road Map



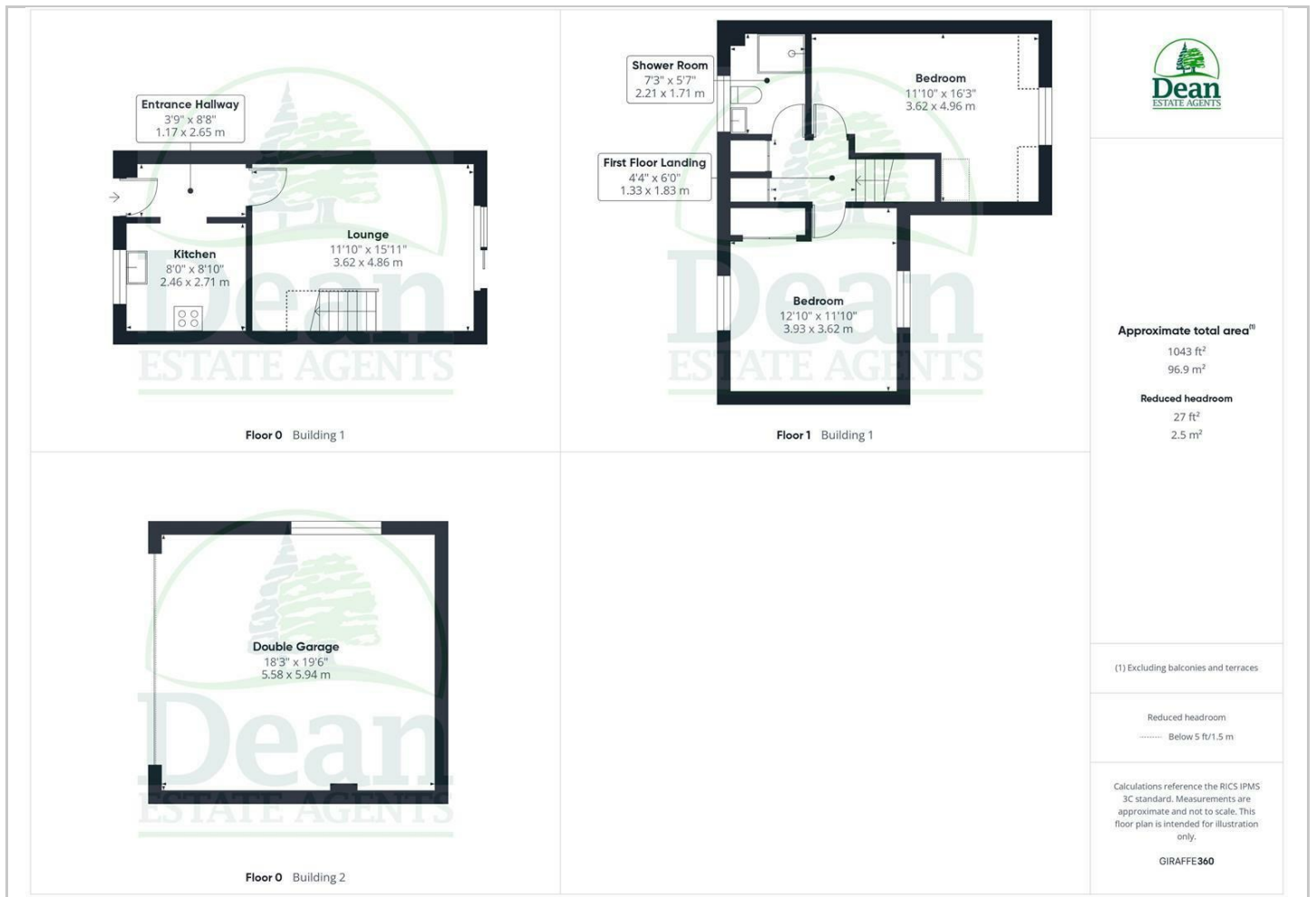
Hybrid Map



Terrain Map



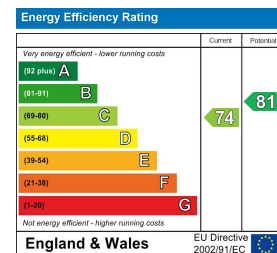
Floor Plan



Viewing

Please contact our Coleford Office on 01594 835751 if you wish to arrange a viewing appointment for this property or require further information.

Energy Efficiency Graph



These particulars, whilst believed to be accurate are set out as a general outline only for guidance and do not constitute any part of an offer or contract. Intending purchasers should not rely on them as statements of representation of fact, but must satisfy themselves by inspection or otherwise as to their accuracy. No person in this firm's employment has the authority to make or give any representation or warranty in respect of the property.