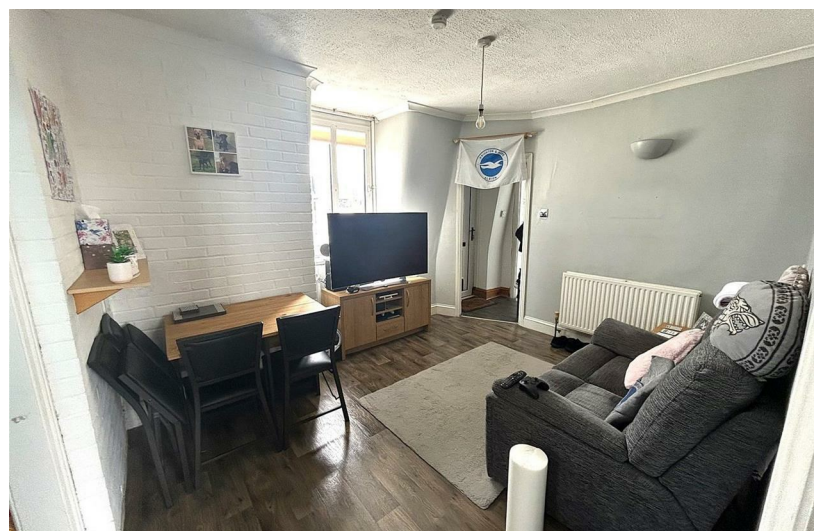
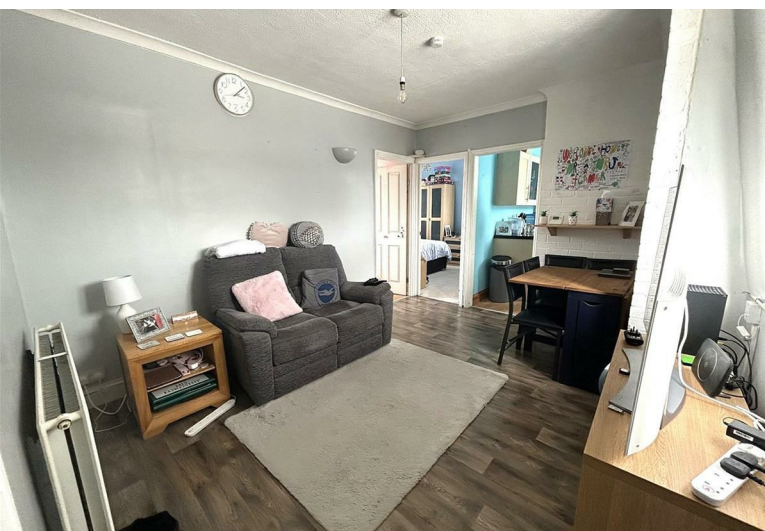


2
BED

2 Bedroom flat with views

Flat 10 Church Hill Lodge, Church Hill, Newhaven, BN9 9LQ

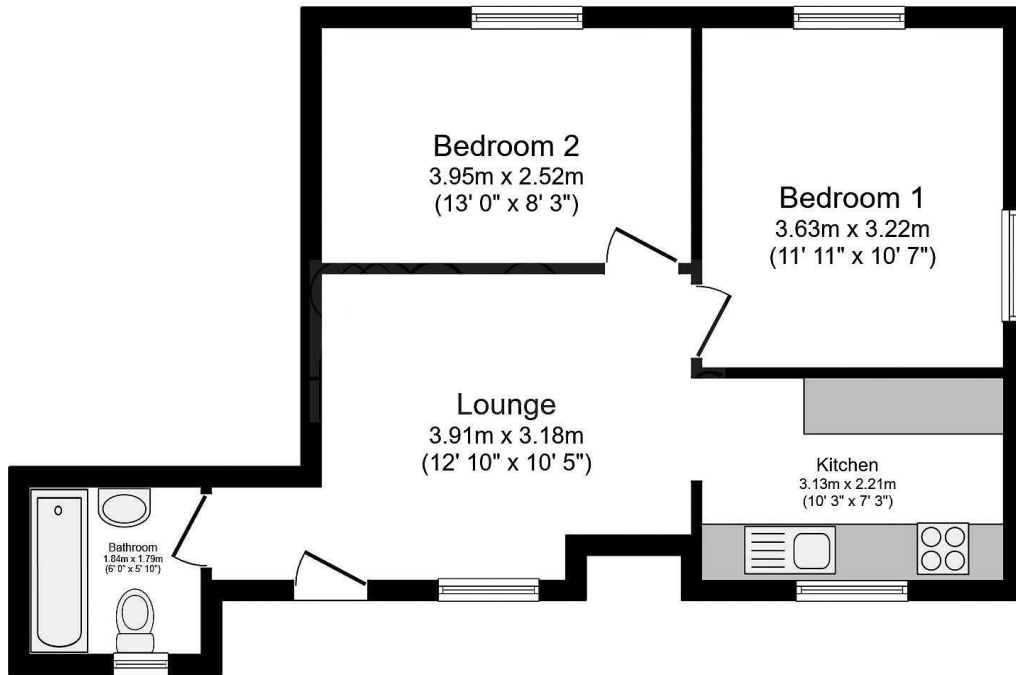


Asking Price £160,000

Leasehold

phillipmann
we do more

www.phillipmann.com



Total floor area 46.7 m² (503 sq.ft.) approx

inbrief...

Phillip Mann estate agents are delighted to offer for sale this two bedroom top floor flat located within a short walk from Newhaven Town. The property is in good condition and viewings are recommended.

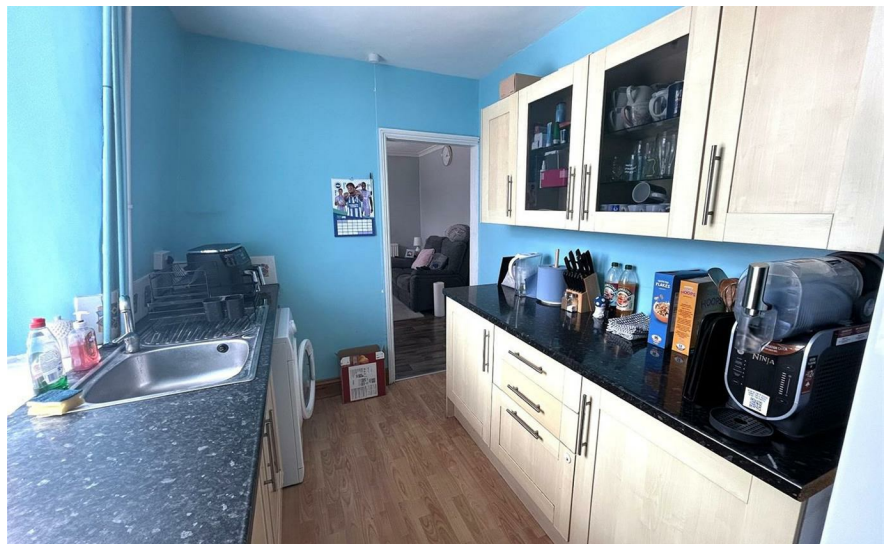
The property is accessed via a communal hallway with stairs leading up to the roof terrace with private entrance door leading to flat 10.

The entrance door leads into entrance porch leading into the lounge/diner. This room has laminate floor, space for a dining table and doors which lead to the accommodation. The kitchen is fitted with a range of wall and base units incorporating a selection of cupboards and drawers. There is a built in oven and gas hob and spaces for washing machine and fridge/freezer. Moving through, bedroom one is a generous size double which is carpeted and has two windows overlooking the front and side with distant downland views. Bedroom two, again, a double has laminate floor, built in wardrobes and a window to the front.

Completing the property is the bathroom fitted with paneled bath with electric shower over, low flush WC and wash hand basin. This room is complete with part tiled walls and frosted window.

Lounge - 13 x 10
 Kitchen - 10'1 x 7
 Bedroom one - 11'1 x 10
 Bedroom two - 11 x 8

Lease - Term - 125 years with a remaining term of 112 years
 Ground Rent - £250 pa
 Service Charge - Approx. £936 per 6 months.



Council Tax Band A

Energy Rating D

moreinfo...



Phillip Mann Newhaven Office
 16 Bridge Street, Newhaven, BN9 9PJ
 01273 517517

To see more details on this & all our homes go to
www.phillipmann.com