



HW

ESTATE AGENTS

Sackville Road, Hove
£375,000



Sackville Road

Hove

Beautiful three bedroom Victorian maisonette in central Hove, blending period charm and modern style. Features spacious rooms, open plan kitchen, home office spaces, and close to seafront and station.

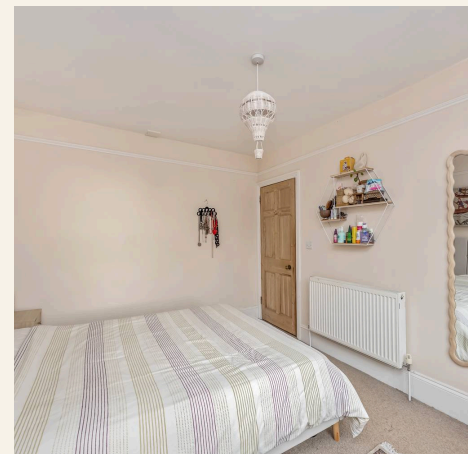
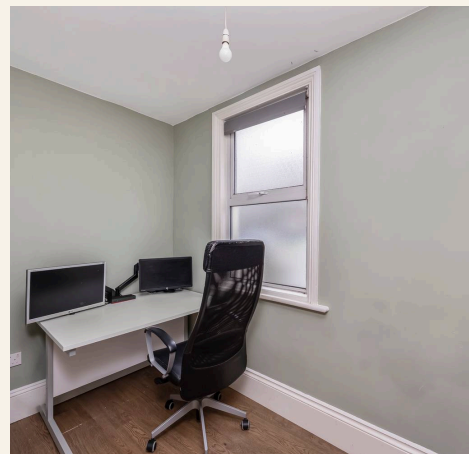
Council Tax band: B

Tenure: Leasehold

EPC Energy Efficiency Rating: D

EPC Environmental Impact Rating: D

- Victorian architecture
- Period features
- Large bay windows
- Open plan kitchen living area
- Integrated appliances
- Modern bathroom
- Walk-in shower



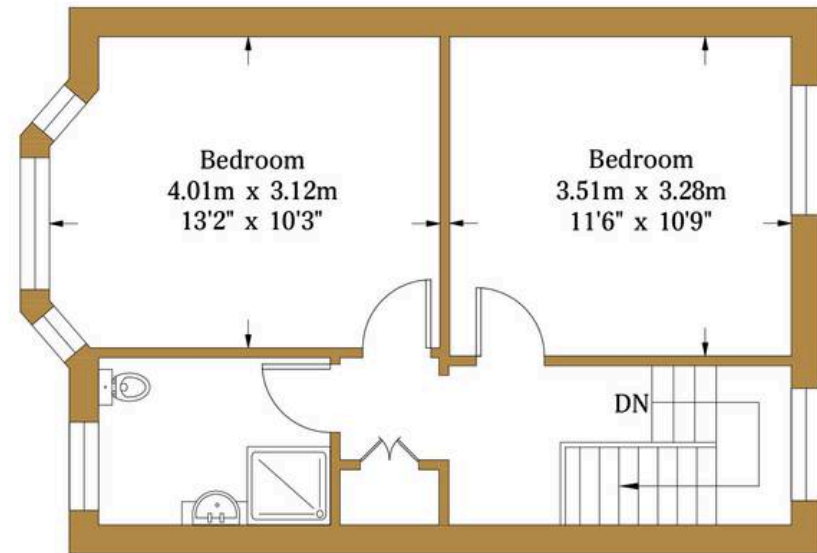
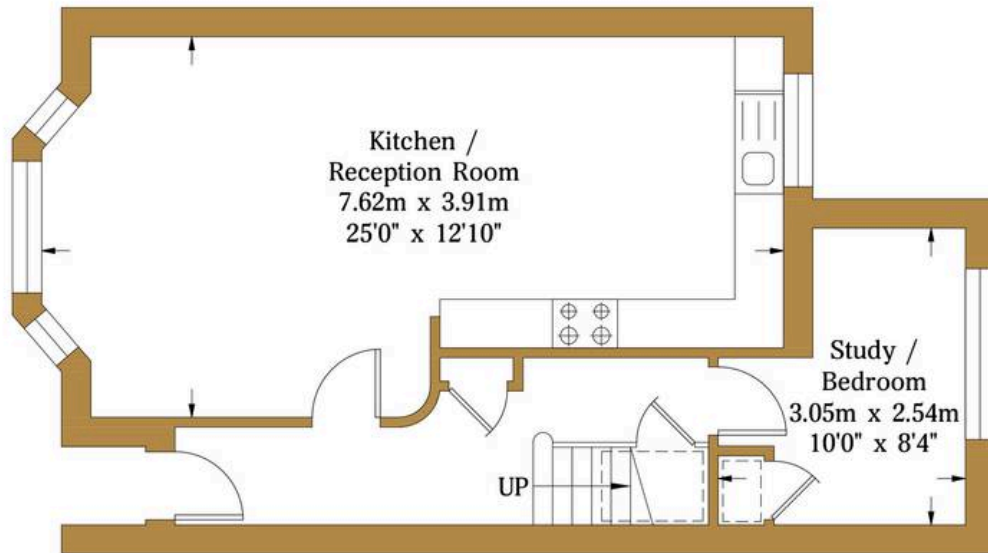


Sackville Road

Approx. Gross Internal Area:- 79.4 sq.m. 855.0 sq.ft.

HW

ESTATE AGENTS



Ground Floor
Approximate Floor Area
455.0 sq ft
(42.3 sq m)

First Floor
Approximate Floor Area
400.0 sq ft
(37.1 sq m)

Illustration for identification purposes only, measurements are approximate, not to scale.

© hwestateagents



HW Estate Agents

HW Estate Agents, 80 Goldstone Villas, Hove - BN3 3RU

01273 359000 · hove@hwestateagents.co.uk · www.hwestateagents.co.uk

HW

ESTATE AGENTS