



130 Bodycoats Road, Chandler's Ford, SO53 2JD

£425,000

Situated Bodycoats Road in Chandler's Ford, this three bedroom semi-detached house offers an excellent opportunity for those looking to modernise and create a family home to their own specification. The property features a spacious entrance hall leading to the main accommodation. On the ground floor there is a large bedroom, a generous sitting/dining room, kitchen, and a cloakroom. Upstairs, there are two further bedrooms providing good accommodation for family or guests. The layout also offers scope for reconfiguration, with potential to create a principal suite by adapting the existing living and utility areas, subject to the necessary works. The property has converted the original garage providing an additional bedroom, a garage has then been added on to the side of the home. While the property would benefit from modernisation, it represents a strong opportunity to add value and tailor the space to individual requirements. Conveniently located in Chandler's Ford, the home is within easy reach of local amenities, schools, and transport links, making it well suited to families and professionals alike.

ACCOMMODATION

Ground Floor

Entrance hall:

Built in storage cupboard and stairs to first floor.

Sitting/Dining room:

24'11" x 11'8" (7.60m x 3.55m) Doors onto rear garden .

Kitchen:

16'3" x 11'1" (4.96m x 3.38m) Range of units including space for cooker, dishwasher, washing machine and fridge/freezer. Door to rear garden.

Cloakroom:

WC and wash basin.

Bedroom 1:

14'5" x 8'1" (4.39m x 2.47m) Built in wardrobes.

First Floor

Landing:

Airing cupboard.

Sitting room:

16'10" x 13'3" (5.13m x 4.03m) Large room which could be used as the master bedroom.

Utility:

11'7" x 7'5" (3.54m x 2.26m) Access to rear garden.

Bedroom 2:

13'5" x 11'5" (4.08m x 3.55m)

Bedroom 3:

11'8" x 11'4" (3.55m x 3.46m)

Bathroom:

Bath and wash basin.

Cloakroom:

WC.

OUTSIDE

Front:

Driveway parking, lawn area and path to the front door.

Rear:

Tiered garden with patio area and two separate lawn areas. Side patio leading to garage and upstairs utility.

Garage:

17'1" x 8'8" (5.21m x 2.64m) Driveway parking in front. Back door leading to rear garden. Electric garage door.

OTHER INFORMATION

Tenure:

Freehold

Approximate Age:

1970's

Approximate Area:

1490 sq ft / 138.3 sq m

Sellers Position:

No forward chain

Heating:

Gas central heating

Windows:

UPVC double glazing

Infant/Junior School:

Fryern Infant School / Fryern Junior School

Secondary School:

The Toynbee School

Local Council:

Eastleigh Borough Council - 02380 688000

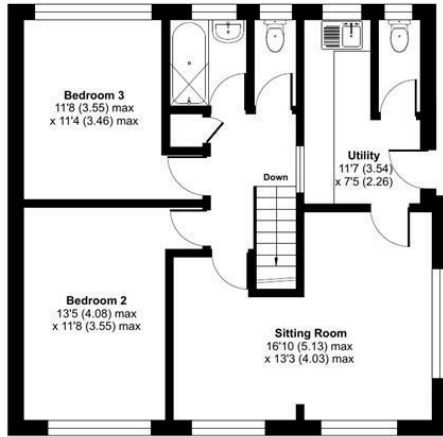
Council Tax:

Band C

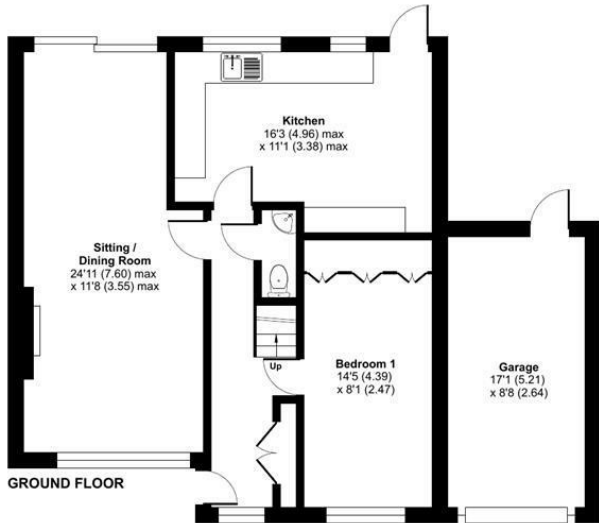
Agents Note:

If you have an offer accepted on a property we will need to, by law, conduct Anti Money Laundering Checks. There is a charge of £60 including vat for these checks regardless of the number of buyers involved.

Ground Floor = 700 sq ft / 65 sq m
 First Floor = 642 sq ft / 59.6 sq m
 Garage = 148 sq ft / 13.7 sq m
 Total = 1490 sq ft / 138.3 sq m
 For identification only - Not to scale



FIRST FLOOR



GROUND FLOOR



Energy Efficiency Rating		Current	Potential
Very energy efficient - lower running costs			
(92 plus)	A		
(81-91)	B		
(69-80)	C		
(55-68)	D	68	75
(39-54)	E		
(21-38)	F		
(1-20)	G		
Not energy efficient - higher running costs			
England & Wales		EU Directive 2002/91/EC	

Floor plan produced in accordance with RICS Property Measurement 2nd Edition, Incorporating International Property Measurement Standards (IPMS2 Residential). © ricscom 2026. Produced for Sparks Ellison. REF: 1446415

94 Winchester Road, Chandler's Ford, Hampshire, SO53 2GJ

Sales: t: 02380 255333 e: property@sparksellison.co.uk

Lettings: t: 02380 018518 e: lettings@sparksellison.co.uk

While we endeavour to make our sales particulars fair, accurate and reliable, they are only a general guide to the property and, accordingly, if there is any point which is of particular importance to you please contact the office and we will be pleased to check it for you, especially if you are contemplating travelling some distance to view the property. These approximate room sizes are only intended as general guidance. You must verify the dimensions carefully before ordering carpets or any built in furniture. Please note we have not tested the services or any of the equipment or appliances in this property, accordingly we strongly advise prospective buyers to commission their own survey or service report before finalising their offer to purchase. These particulars are issued in good faith but do not constitute representations of fact or form part of any offer or contract. The matters referred to in these particulars should be independently verified by prospective buyers or tenants. Neither Sparks Ellison nor any of its employees or agents has any authority to make or give any representation or warranty whatever in relation to this property. Your home is at risk if you do not keep up repayments on a mortgage or other loan secured on it. Written quotations available on request. All loans secured on property. Life assurance usually required.



