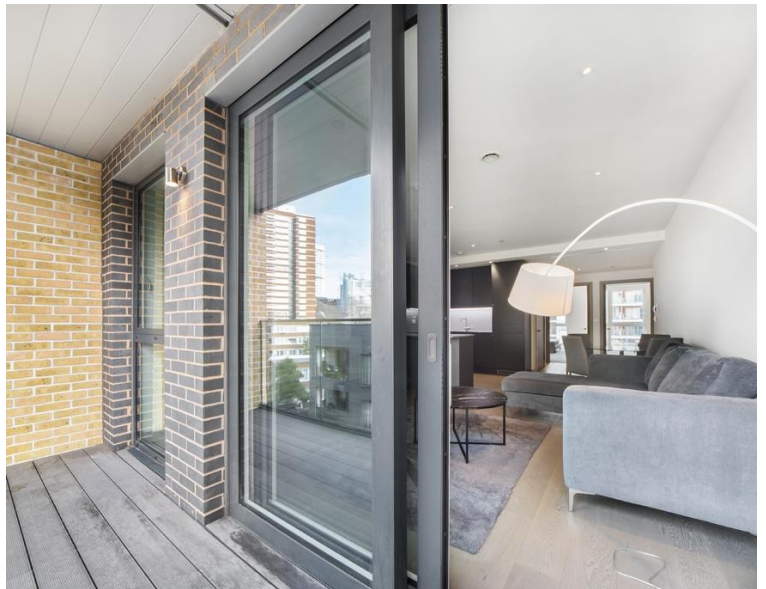
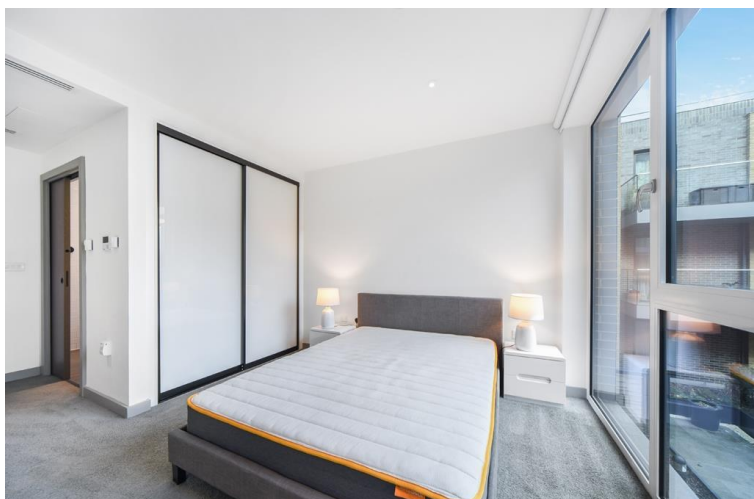


**Long Lane, London SE1**  
Price £780 per week - Furnished







## Description

A contemporary 2 bedroom apartment in the Taper Building, located in the heart of Bermondsey, SE1

This luxury 2 bedroom apartment is offered furnished and comprises 2 double bedroom with fitted wardrobes, reception with balcony, master bedroom with en-suite, open plan fitted kitchen with integrated appliances and modern bathroom.

The Taper Building benefits from concierge, residents gym, communal courtyard and roof terrace. London Bridge station is just 0.3 miles away, with both Overground, Northern line and Jubilee line services.

Council tax band: E. Rent is payable on a monthly basis, and you may be required to pay more than a month's rent in advance for tenancies with annual rents exceeding £100,000. You will be required to pay a 1 week holding deposit following a successful offer. Tenancies with annual rents up to £50,000 will require a 5 weeks' security deposit, while those exceeding this threshold will require a 6 weeks' deposit. Utility bills, council tax, telephone line and broadband are not included in the rent. As well as paying the rent, you may also be required to make some additional permitted payments. If your tenancy does not qualify as an APT, additional fees may apply. Please visit [jll.co.uk/fees](http://jll.co.uk/fees) for details of fees that may be payable when renting a property. To check broadband and mobile phone coverage please visit Ofcom here [ofcom.org.uk/phones-telecoms-and-internet/advice-for-consumers/advice/ofcom-checker](http://ofcom.org.uk/phones-telecoms-and-internet/advice-for-consumers/advice/ofcom-checker)

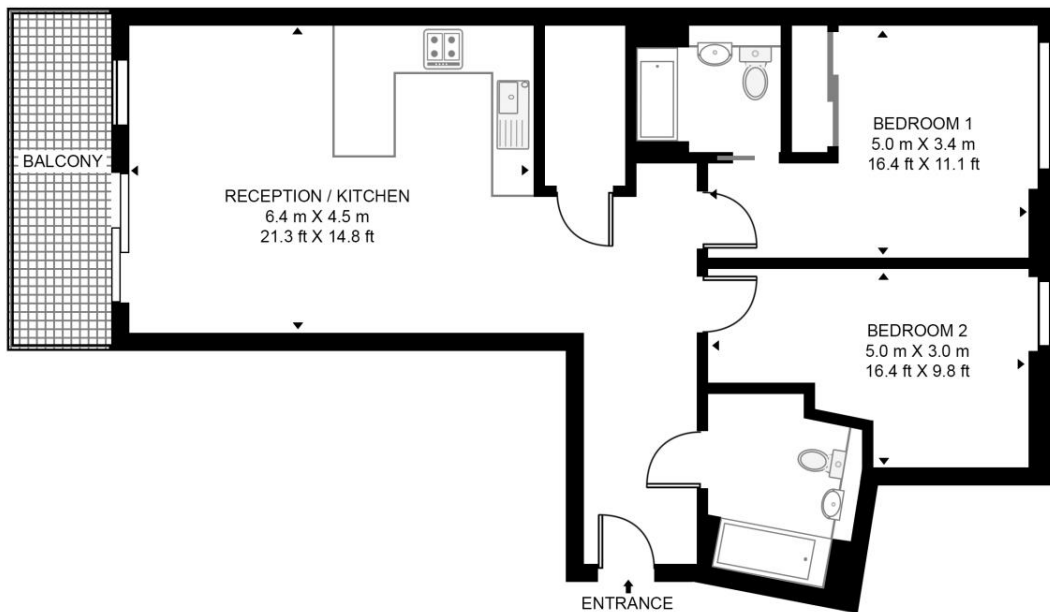
- 2 Bedrooms
- 2 Bathrooms
- 2nd Floor
- Balcony
- 24 hour concierge
- Resident's gym
- Furnished
- 0.5 miles from London Bridge Station
- Approx. 861 sq ft (80 sq m)
- Furnished

# Floorplan

861 sq ft | 80 sq m

## TAPER BUILDING

APPROXIMATE GROSS INTERNAL FLOOR AREA 861 SQ.FT (80 SQ.M)



## SECOND FLOOR

**HDVA**

This floor plan has been defined by the RICS Code of Measurement. This floor plan and all others are for approximate representative purposes only and upon usage is agreed to as such by the client.

WWW: [hdvirtualart.com](http://hdvirtualart.com) | TEL: 0203.974.1567 | EMAIL: [info@hdvirtualart.com](mailto:info@hdvirtualart.com)

City  
25 Walbrook The Walbrook  
Building,  
London EC4N 8AF  
+4420 7337 4000

*Urban living, your way.*

[jll.co.uk/residential](http://jll.co.uk/residential)

© 2019 Jones Lang LaSalle IP, Inc. All rights reserved. All information contained herein is from sources deemed reliable; however, no representation or warranty is made to the accuracy thereof.

