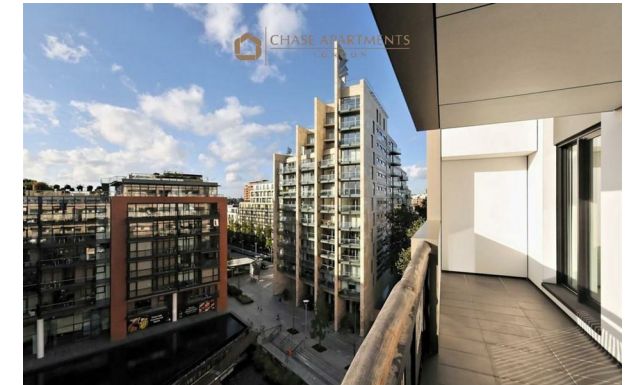




CHASE APARTMENTS
LONDON



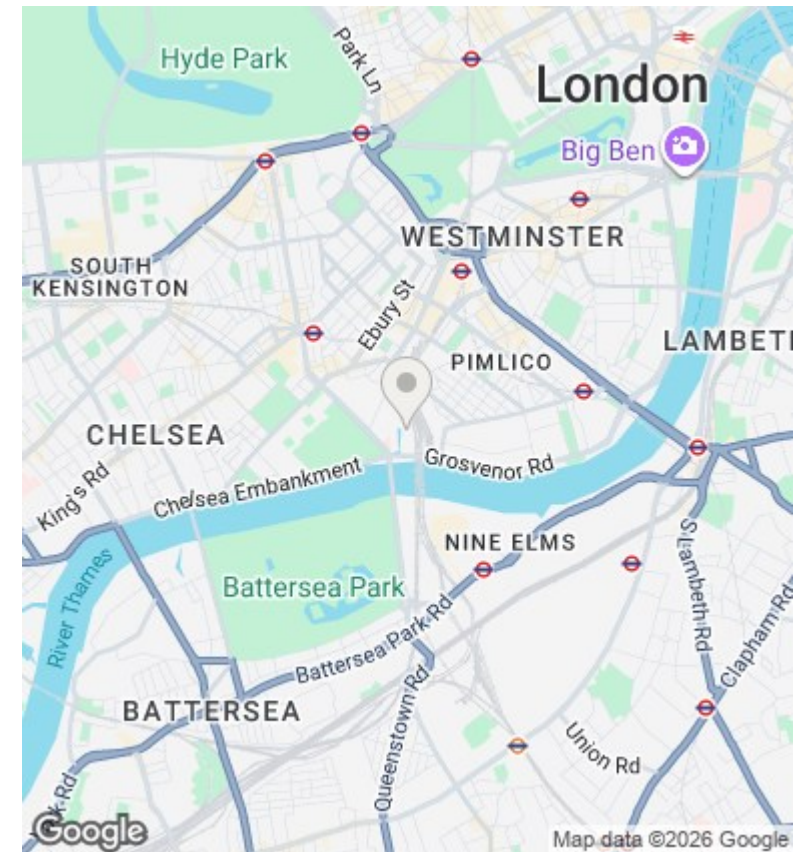
Gatliff Road, London SW1W SW1W 8DQ

£2,708 Per Month

- Elegant one-bedroom apartment set within the Grosvenor Waterside development
- Close to Battersea Power Station and Kings Road for shopping and restaurants
- Access to on-site residents' gym, spa, and leisure facilities
- Contact us today to arrange a viewing
- Spacious open-plan reception with floor-to-ceiling windows, offering excellent natural light
- Close to Victoria and Sloane Square Tube and Train Stations
- Easy access to Knightsbridge, Mayfair, and the West End
- Contemporary fitted kitchen with integrated appliances, ideal for modern city living
- 24-hour concierge service, providing security, convenience, and peace of mind
- An excellent choice for tenants wanting concierge-led, secure, and well-connected accommodation

Grosvenor Waterside, 32 Gatliff Road, Belgravia, London, SW1W 8QN
02077225022

<http://www.chaseapartments.com/>



Viewings

Viewings by arrangement only.
Call 02077225022 to make an appointment.

Council Tax Band

E

EPC Rating:

B

Energy Efficiency Rating		
	Current	Potential
Very energy efficient - lower running costs		
(92 plus) A		
(81-91) B	82	83
(69-80) C		
(55-68) D		
(39-54) E		
(21-38) F		
(1-20) G		
Not energy efficient - higher running costs		
England & Wales	EU Directive 2002/91/EC 