



## St. Margarets Road, TW1

£2,300 Per calendar month

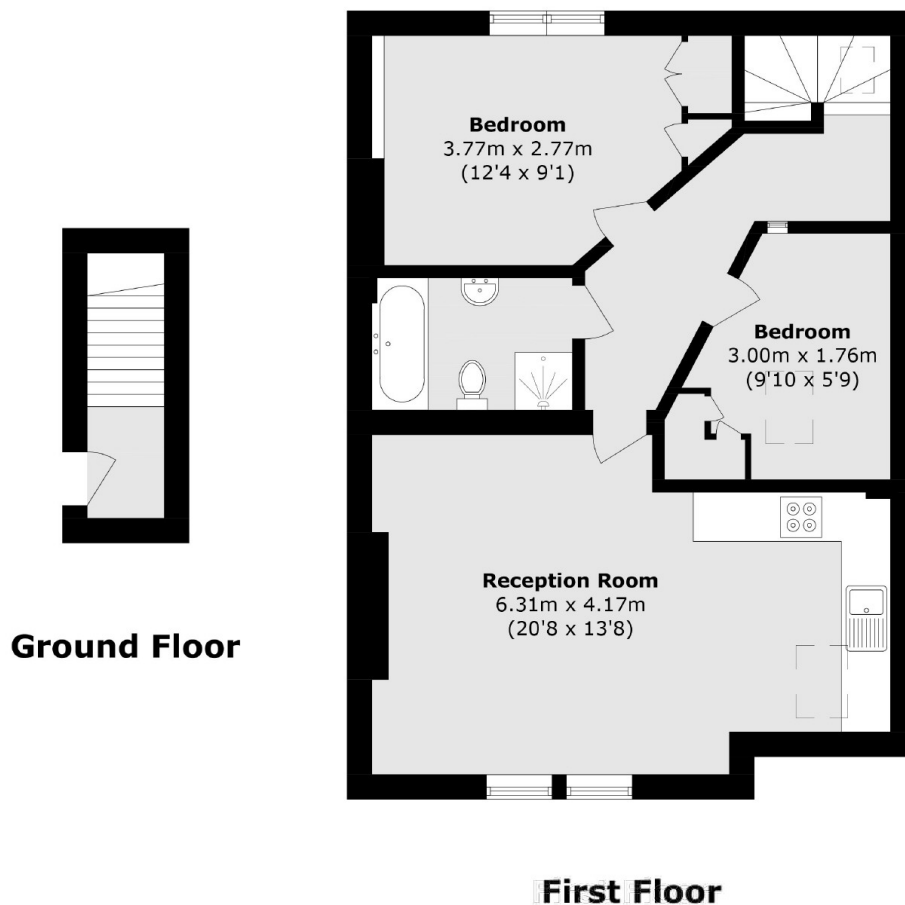
A stunning and uniquely designed two double bedroom top floor apartment, finished to a high specification throughout. This bright and modern home features impressive mezzanine levels in both the living area and second bedroom, as well as a separate study space perfect for flexible living. Tastefully styled with a contemporary finish, the property also benefits from unallocated off-street parking.

St Margarets road is a popular spot in St Margarets within 0.3 miles of the train station, cafés and boutiques shops of the village. The River Thames tow path stroll into Richmond is only 0.5 miles away.

### Features

- Two Double Bedrooms
- Top Floor Flat
- Unfurnished
- Off-Street Parking
- Mezzanine Level And Separate Study Area

# St. Margarets Road, St Margarets, TW1



Total area (approx.): 58.8 sq.m (632.9 sq.ft)