



North Street, SW4

£2,400 Per calendar month

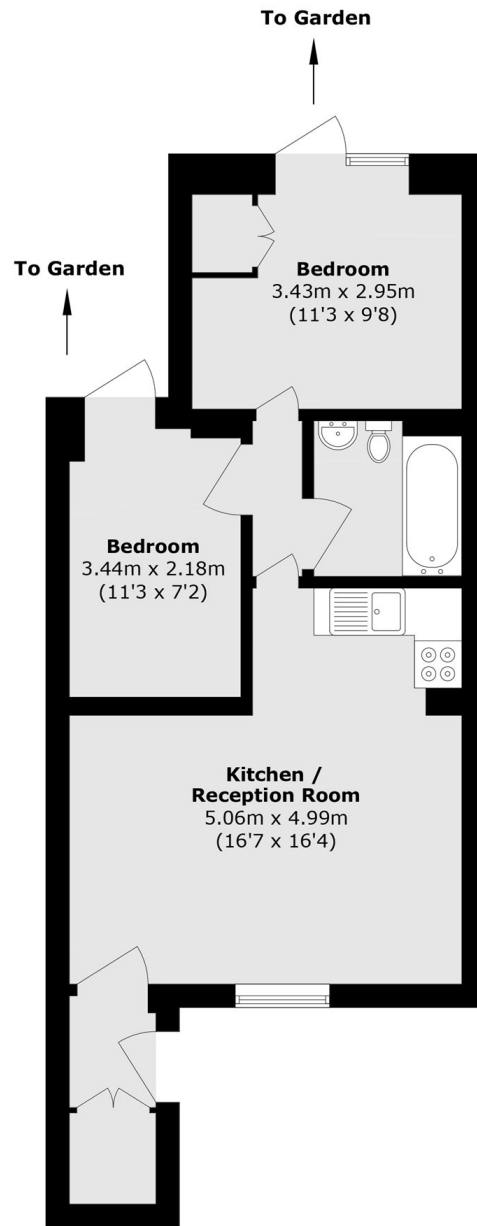
This two double bedroom lower ground floor flat offers spacious accommodation, with a modern open plan reception room and kitchen, with space for dining and access to a private garden. Perfect for professional sharers.

North Street is situated in the heart of Clapham Old Town and provides good access to the Old Town's unique range of restaurants and shops.

Features

- Private Garden
- Two Double Bedrooms
- Neutral Interior
- Prime Location
- Open Plan Reception
- Lower Ground Floor

North Street, London, SW4



Total area (approx.): 49.4 sq. m (531.7 sq. ft)