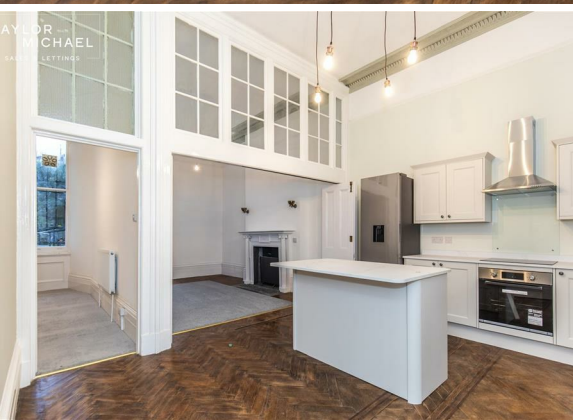




3 Bed
Flat
located in

£2,750



TAYLOR
MICHAEL

Palmeira Square, Hove BN3 2JB

Approximate Gross Internal Area = 122.8 sq m / 1322 sq ft

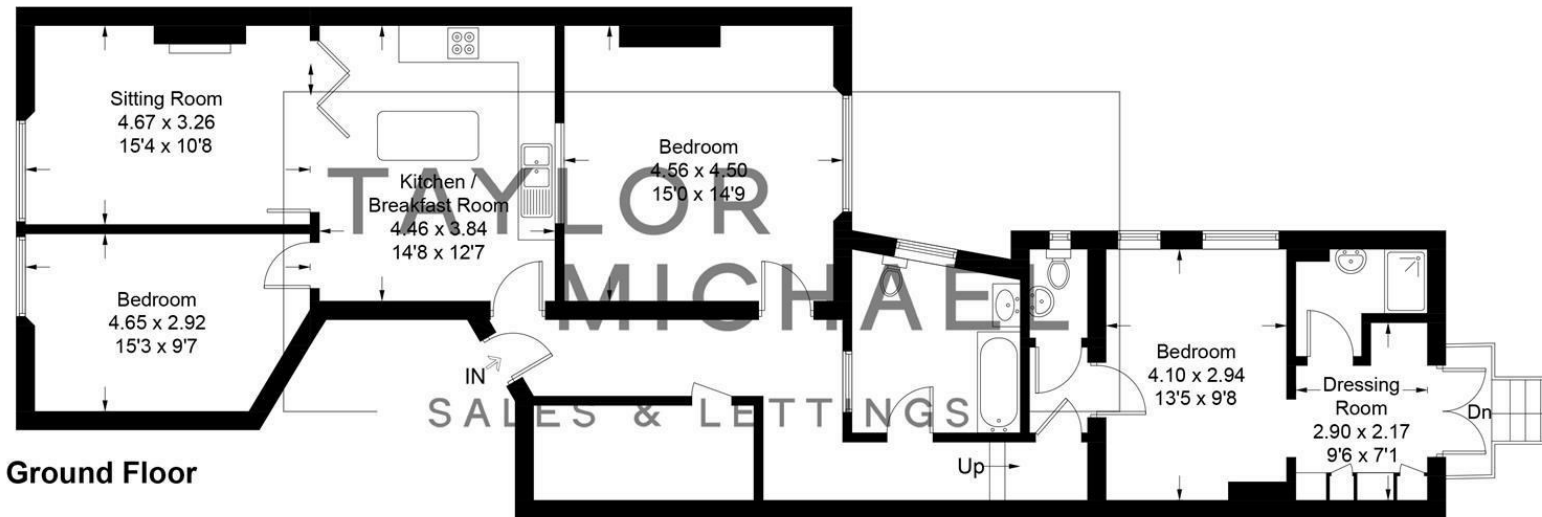


DIRECTIONS

CONTACT

62 Church Road
Hove
East Sussex
BN3 2FP

E: lettings@taylormichael.agency
T: 01273 600100
<https://taylormichael.agency/>



Ground Floor

Illustration for identification purposes only, measurements are approximate, not to scale.
Imageplansurveys @ 2024

Energy Efficiency Rating		
	Current	Potential
Very energy efficient - lower running costs		
(92 plus) A		
(81-91) B		
(69-80) C		78
(55-68) D	64	
(39-54) E		
(21-38) F		
(1-20) G		
Not energy efficient - higher running costs		
EU Directive 2002/91/EC		
England & Wales		

TAYLOR
MICHAEL