



8 Elwes Lodge, Carlton - NG4 1DX

Prices From £115,000



8 Elwes Lodge

Nottingham

Well-presented first floor maisonette with excellent views! Ideal for first-time buyers, investors or those seeking single-level living and boasting 2 beds, kitchen, refitted bathroom and a lounge/diner.

Council Tax band: A

Tenure: Leasehold

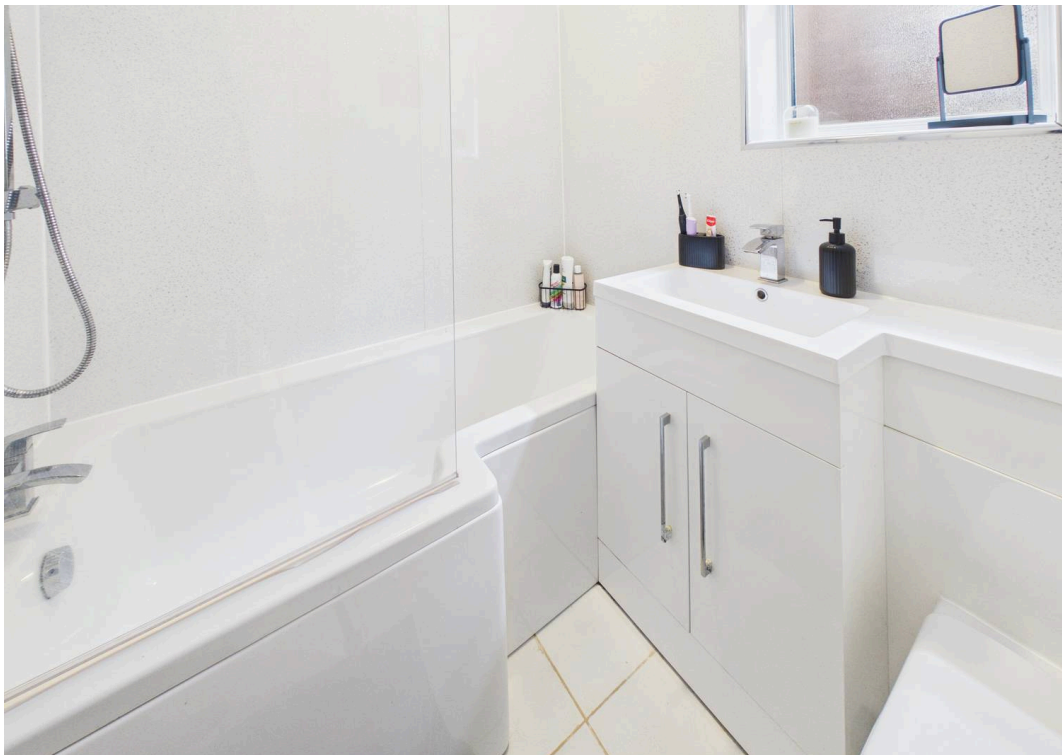
EPC Energy Efficiency Rating: C

EPC Environmental Impact Rating: C

- Well-presented first floor maisonette
- Ideal for first-time buyers, professionals, investors or those seeking low-maintenance single-level living
- Within easy reach of nearby local amenities and bus services
- Spacious lounge dining room with a bay window offering excellent rear views
- Modern kitchen with high-gloss units and integrated appliances
- Two good-sized bedrooms
- Refitted contemporary bathroom with a three-piece white suite and twin-head rainfall shower
- Shared rear garden providing outdoor space
- Popular residential location
- Viewing highly recommended

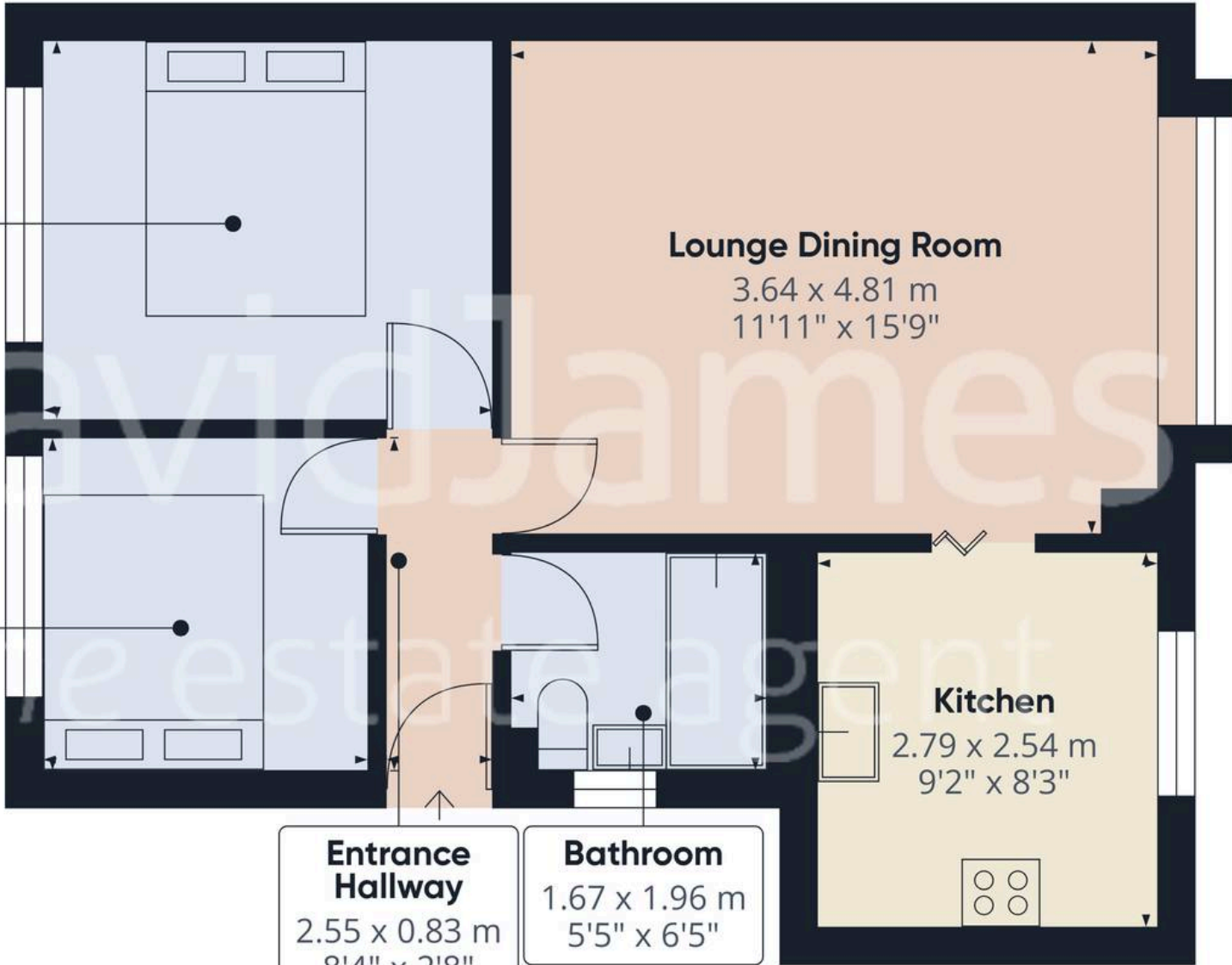






Bedroom One
2.79 x 3.38 m
9'1" x 11'1"

Bedroom Two
2.55 x 2.44 m
8'4" x 7'11"



Entrance Hallway
2.55 x 0.83 m
8'4" x 2'8"

Bathroom
1.67 x 1.96 m
5'5" x 6'5"

Lounge Dining Room
3.64 x 4.81 m
11'11" x 15'9"

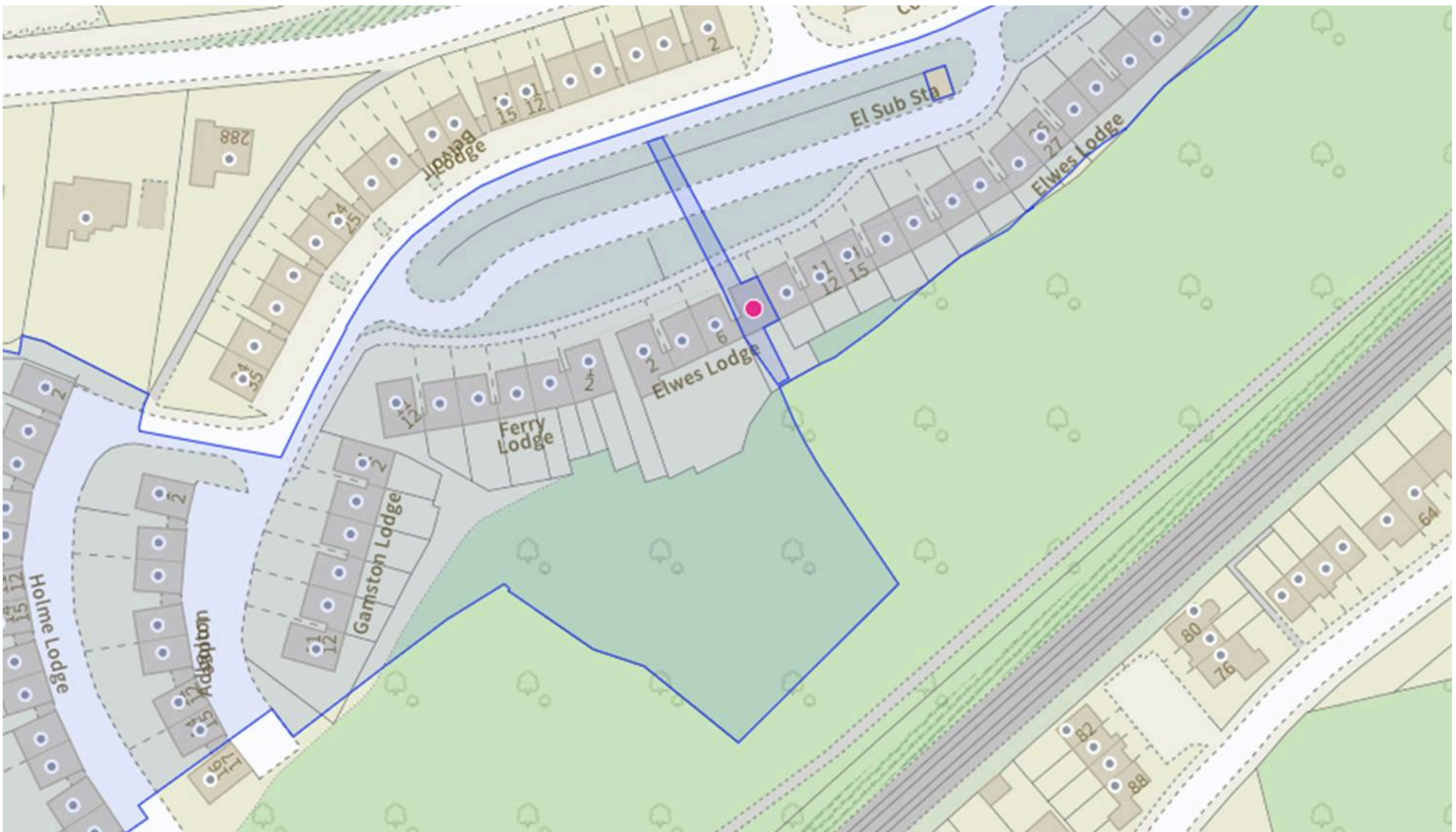
Kitchen
2.79 x 2.54 m
9'2" x 8'3"

Approximate total area⁽¹⁾
46.6 m²
501 ft²

(1) Excluding balconies and terraces

Calculations reference the RICS IPMS 3C standard. Measurements are approximate and not to scale. This floor plan is intended for illustration only.





David James Estate Agents

376 Carlton Hill, Carlton - NG4 1JA

0115 987 8957 • carlton@david-james.com • www.david-james.com

These particulars are produced in good faith and are set out as a general guide only. Measurements are approximate and floor plans are for illustrative purposes only. Services have not been tested. We have established professional relationships with third-party suppliers for the provision of services to Clients, details of which can be found on the property listing page on our website.