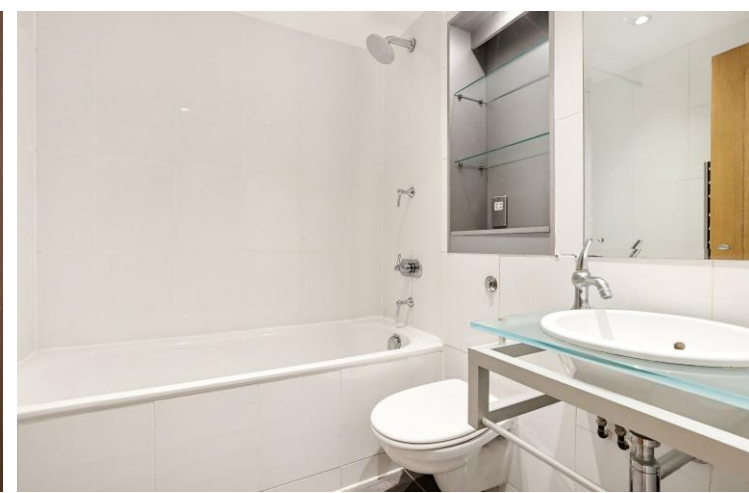




Albert Embankment  
London, SE1

CHESTERTONS





A very well presented one-bedroom apartment extending to approximately 500 sq ft, situated on the third floor of a modern purpose-built riverside development on Albert Embankment.

The property offers well-proportioned accommodation throughout, comprising a spacious double bedroom with fitted wardrobes, a contemporary bathroom, and a stylish open-plan kitchen fitted with integrated appliances. The comfortable reception area provides an ideal space for both relaxing and entertaining, with direct access to a generous private balcony.

Residents benefit from a porter/concierge service and two passenger lifts, ensuring convenience and security. Ideally positioned along the River Thames, the development enjoys easy access to local amenities, transport links, and the vibrant attractions of Central London.

This attractive apartment would make an ideal first-time purchase, pied-à-terre, or investment opportunity.

- A Well Presented Modern One Bedroom Apartment
- Open Plan Kitchen
- Modern Bathroom
- Private balcony
- Lift Access / Porter
- No Onward Chain

Asking Price £395,000

Energy Efficiency Rating		Current	Potential
90-100	A		
81-89	B		
72-80	C	76	83
63-71	D		
54-62	E		
45-53	F		
35-44	G		

Not energy efficient - higher running costs

England, Scotland & Wales

EU Directive 2002/91/EC

**Tenure:** Leasehold 973 years remaining  
**Service Charge:** £2,800 p.a. (Approximately)  
**Ground Rent:** £150 p.a.  
**Local Authority:** Westminster  
**Council Tax Band:** E

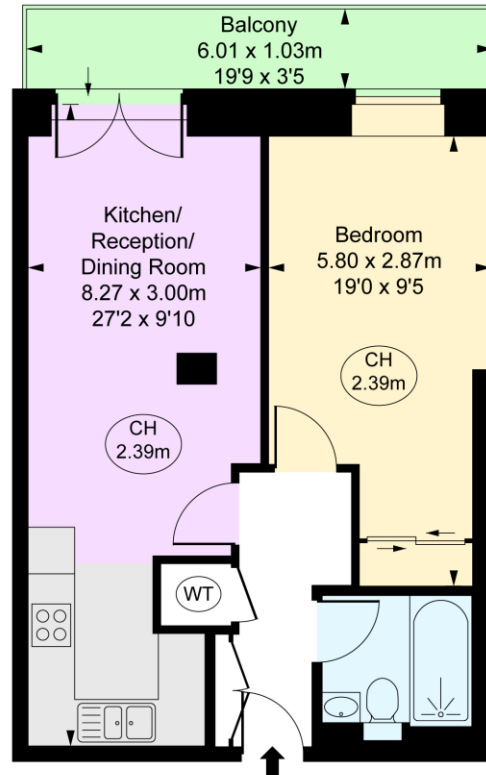
*Chestertons Westminster & Pimlico Sales*

105 Wilton Road  
 London  
 SW1V 1DZ  
 westminster@chestertons.co.uk  
 020 3040 8201  
 chestertons.co.uk

# Albert Embankment, SE1

Approximate Gross Internal Area  
46.51 sq m / 501 sq ft

( CH = Ceiling Heights )



Third Floor



This plan is not to a given scale. A detailed layout plan to scale for valuation is available on request. All measurements and areas are within 1% tolerance and have been prepared in accordance with industry standards as defined in the RICS Code of Measuring Practice.  
© Fulham Performance

Chesterton UK Services Limited trading as Chestertons for themselves and for the vendor of this property whose agents they are, give notice that (i) these particulars do not constitute any part of an offer or contract, (ii) all statements contained within these particulars are made without responsibility on the part of Chestertons or the vendor, (iii) whilst made in good faith, none of the statements contained within these particulars are to be relied upon as a statement or representation of fact, (iv) any intending purchasers must satisfy themselves by inspection or otherwise as to the correctness of each of the statements contained within these particulars, (v) the vendor does not make or give either Chestertons or any person in their employment any authority to make or give representation or warranty whatsoever in relation to this property. Wide angle lenses may be used. ©Copyright Chestertons | Chesterton UK Services Limited | Registered Office 5th Floor, The Lantern, 75 Hampstead Road, London, NW1 2PL Registered Company Number 05334580.



This paper is  
100% recyclable