



24 GUILLEMOT HOUSE

HAMWORTHY

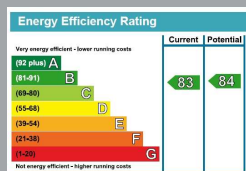
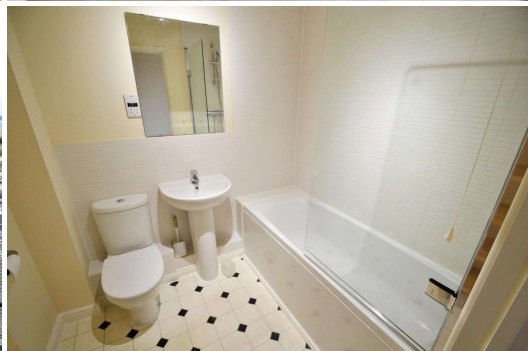
Dorset, BH15 4GD

£900 PCM

[goadsby.com](https://www.goadsby.com)

# SEA VIEW APARTMENT IN HARBOUR REACH WITH PARKING

- Modern One Bedroom Apartment
- Offered Unfurnished
- Balcony With Sea Views
- Allocated Underground Parking
- EPC Rating: Band B



Reference: 206772

**Deposit Amount:** £1,038.46

**Council Tax Band:** B

**Furnishing:** Unfurnished

**Heating Type:** Gas central heating

**Parking:** Parking

**Utilities:**

- Mains Supply Electricity and Gas
- Mains Supply Water - metered

**Drainage:** Mains Supply Drainage

**Broadband:** Refer to Ofcom website  
[www.ofcom.org.uk/phones-and-broadband](http://www.ofcom.org.uk/phones-and-broadband)

**Mobile Signal:** Refer to Ofcom website  
[www.ofcom.org.uk/phones-and-broadband](http://www.ofcom.org.uk/phones-and-broadband)

**Flood Risk:** For more information refer to  
[gov.uk](http://gov.uk), check long term flood risk  
[www.gov.uk/check-long-term-flood-risk](http://www.gov.uk/check-long-term-flood-risk)

This spacious one bedroom apartment is situated in the sought after development of Harbour Reach. This modern 3rd floor property is offered on an unfurnished with white goods included, allocated underground parking and a balcony with sea views.

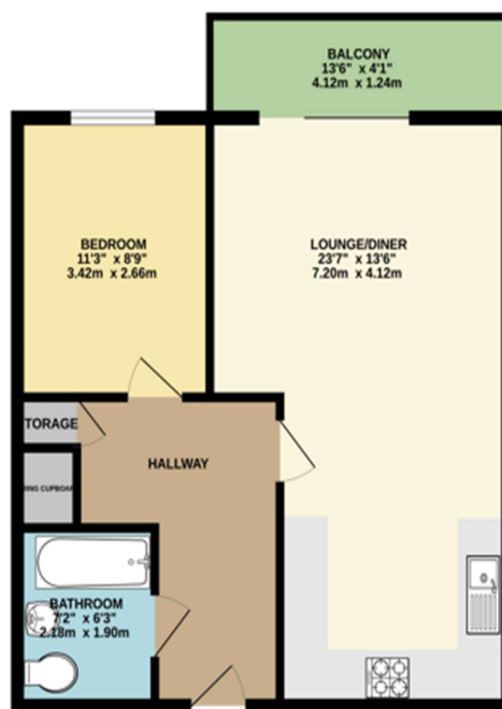
Please note there is currently scaffolding up around the block which means the balconies cannot be used for now.

We have no confirmed end date of the works at the moment.

Please note there is currently scaffolding up around the block which means the balconies cannot current be used.

We have no confirmed end date of the works at the moment.

GROUND FLOOR



**PLEASE NOTE:**

Measurements quoted are approximate and for guidance only. Fixtures, fittings, services & appliances have not been tested and therefore no guarantee can be given that they are in working order. Images have been produced for information and it cannot be inferred that any item shown is included with the property. These particulars are believed to be correct but their accuracy is not guaranteed and they do not constitute an offer or form part of a contract. Solicitors are specifically requested to verify the sales particulars details in the pre-contract enquiries, in particular: price, local and other searches.

This Floor Plan is for guidance only and is NOT to SCALE  
 Made with Interoor 12/18

01202 686555  
 poole@goadsby.com

245 High Street North  
 Poole, Dorset  
 BH15 1DX

Goadsby & Harding (Residential) Ltd  
 Registered Office: 99 Holdenhurst Road, Bournemouth, Dorset BH8 8DY Registered in England No. 1871280