



Tewkesbury Road, W13

£275,000

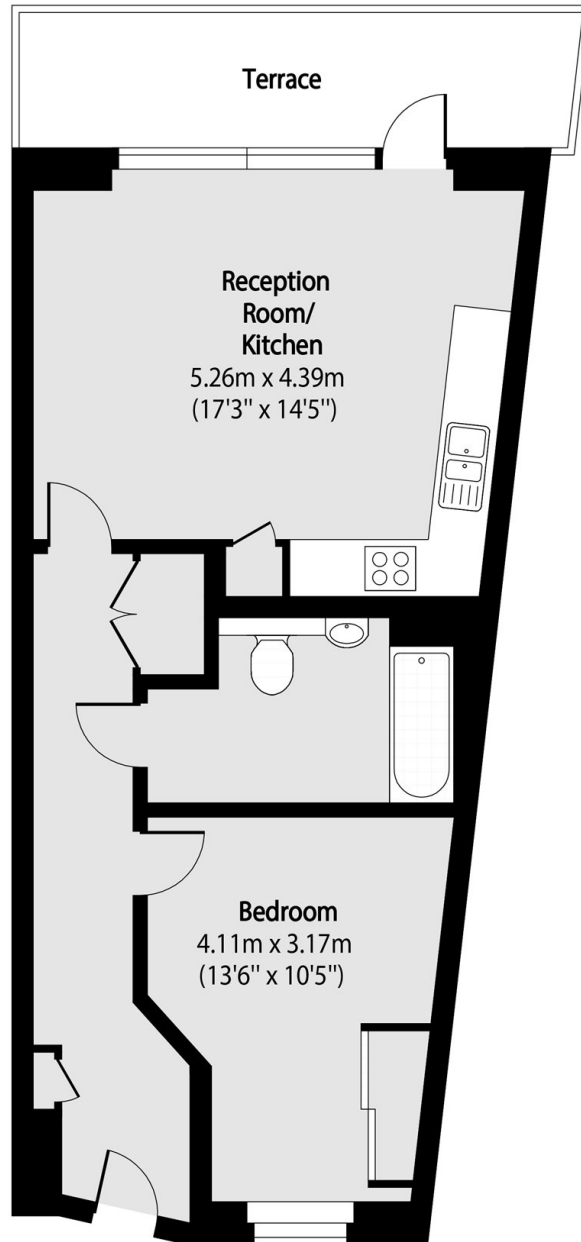
A well-presented one-bedroom purpose-built apartment with a south east facing balcony, offered in excellent condition throughout. The property benefits from a spacious internal courtyard with attractive communal gardens and a children's play area, all within a safe and secure development.

Located on Tewkesbury Road, the apartment sits among landscaped communal gardens in a peaceful spot, yet West Ealing Crossrail station, multiple bus routes, shops, cafés, and green spaces are all close by. Ideal for first-time buyers or young families seeking space and convenience.

Features

- One Bedroom
- Fourth Floor
- Lift Access
- Close To Station
- Long Lease
- No Onward Chain

Tewkesbury Road, London, W13



Total area (approx): 50.91 sq m (548 sq. ft)

Terrace total area (approx): 8.64 sq m (93 sq. ft)