



67 Newlands Court, Bathgate



## 67 Newlands Court, Bathgate

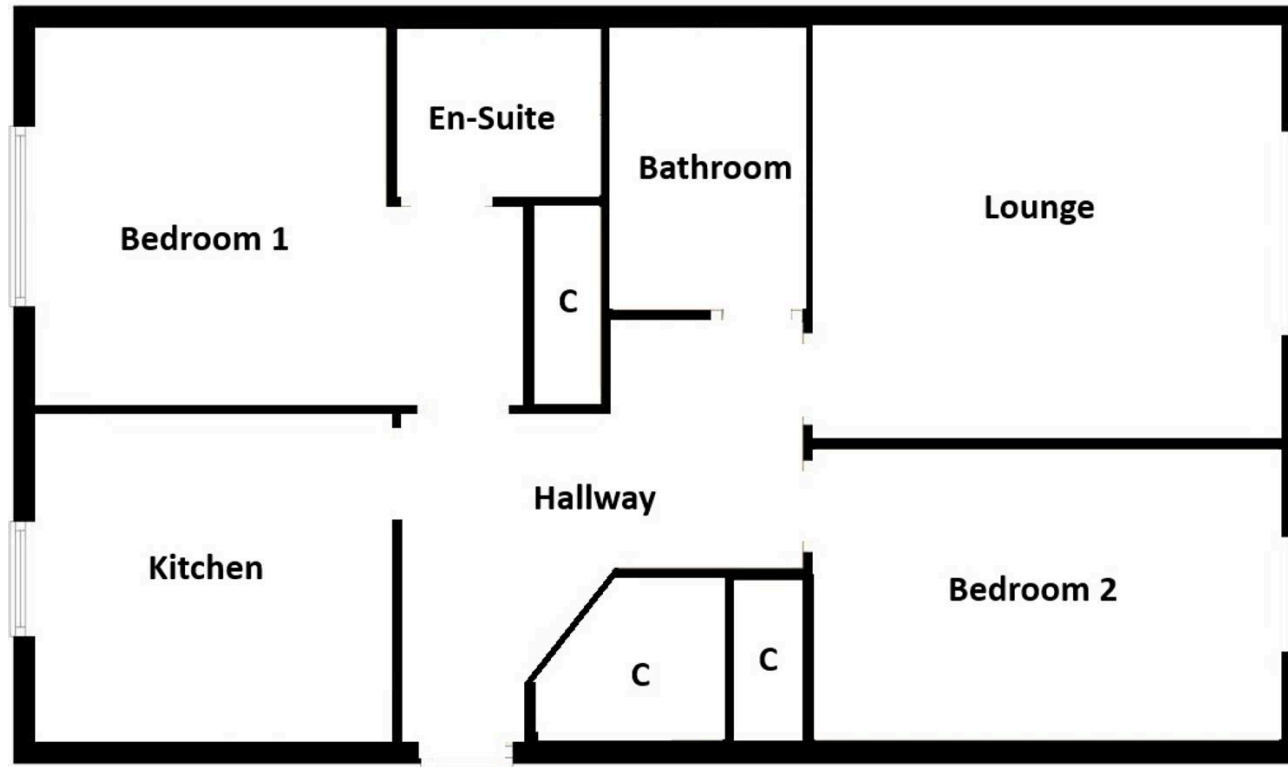
NIALL MCCABE & RE/MAX SELECT (BATHGATE) are delighted to introduce this exceptional 2-bedroom, 2-bathroom second-floor apartment, set within the sought-after Newlands Court development in Bathgate. Positioned just moments from the town centre, this refined residence showcases bright, contemporary interiors, a generously proportioned layout, and plentiful residents' parking. An outstanding opportunity for a stylish first step onto the property ladder.

The internal accommodation unfolds from an elegant central hallway, with the lounge enjoying a peaceful rear aspect and an abundance of natural light. Enhanced by fresh carpeting and stylish décor, it offers a refined space to unwind. The well-appointed kitchen sits adjacent, featuring an extensive range of base and wall-mounted units, complemented by integrated appliances and space for freestanding additions. Bedroom 1 is generously proportioned, complete with fitted wardrobes, soft carpeting, and a sleek three-piece en suite shower room, forming a sleek and private retreat. Bedroom 2 is another well-sized double, presented with fresh, contemporary décor. The accommodation is completed by a modern family bathroom, showcasing a large bathtub and luxurious tiling.

Bathgate is a charming town in West Lothian, ideally located between Edinburgh and Glasgow, offering excellent commuter links via road and rail. Known for its welcoming community, Bathgate combines a rich historical heritage with modern amenities, including local shops, schools, and leisure facilities. The surrounding countryside provides scenic walks and recreational opportunities, making it a popular choice for families and professionals alike.







**REMAX SELECT – *By Niall McCabe***

6 Whitburn Road, Bathgate – EH48 1HH

01506 532 684 • bathgate@remax-scotland.homes •

All details provided are for guidance only and do not form part of any contract. While every effort has been made to ensure accuracy, measurements, descriptions, and images are approximate and prospective purchasers should satisfy themselves by inspection or independent advice. The seller and agent do not accept liability for any errors or omissions.