



St. Helen's Crescent, SW16  
£1,150,000

**Dexters**





## St. Helen's Crescent, SW16

A grand and spacious six bedroom family home located on a double plot with off street parking and located moment from Norbury Station,

This wonderfully family home offer an abundance of natural space, with high ceilings, impressive entrance and substantial side space.

Configured over three floors, there are three reception rooms, kitchen/ breakfast room, utility and w.c to the ground floor. The first floor offers five double bedrooms and family bathroom. On the top floor is a further double bedroom and attic space. Additional benefits include as separate games room with washroom, off street parking for multiple cars and well maintained garden.

St. Helens Crescent Is conveniently situated just 0.3 Miles from Norbury train station and the town centre, which offers a variety of local restaurants and shops. The property also benefits from easy access to local schools, including state and grammar schools, and the open green space of Pollards Hill, making it an ideal location for families.

### Features

- Six bedrooms
- Three reception rooms
- 3,700 sq ft
- Double plot
- Off street parking
- EPC:







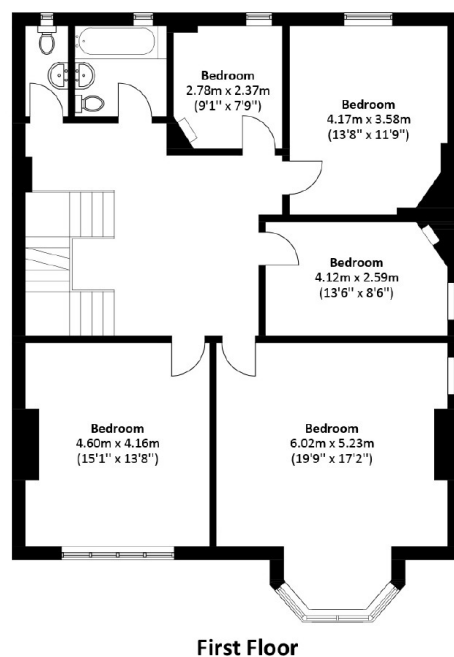
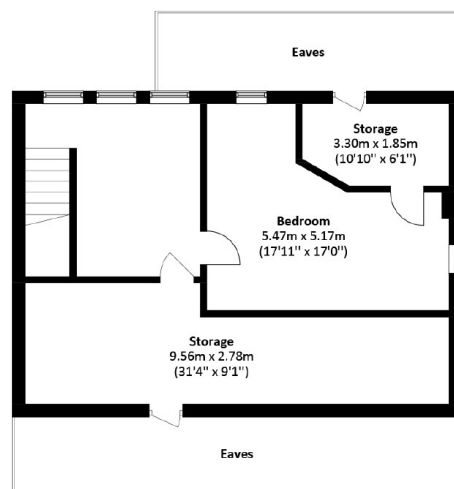
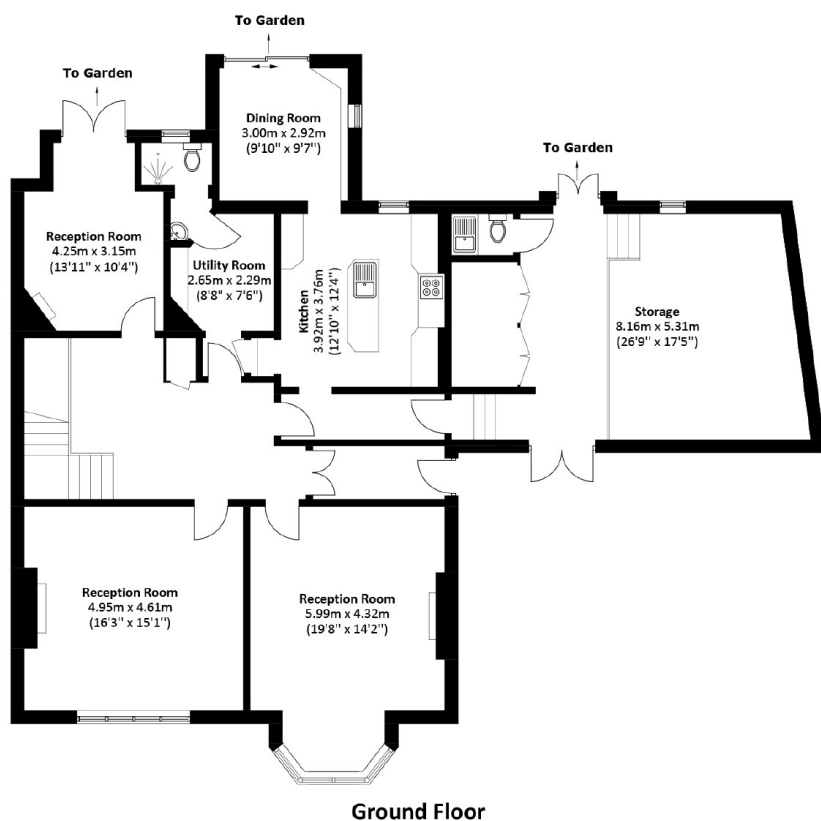








# St. Helen's Crescent, London, SW16



Total area: Approx. 347.4 sq. meters (3,739.5 sq. feet)  
(Excluding Eaves)

## Dexters

Norbury  
1341 London Road  
Norbury  
SW16 4BE  
Sales  
020 8629 8028

Energy Rating: F. We aim to make our particulars both accurate and reliable. However they are not guaranteed; nor do they form part of an offer or contract. If you require clarification on any points then please contact us, especially if you're traveling some distance to view. Please note that appliances and heating systems have not been tested and therefore no warranties can be given as to their good working order.

**RICS** Regulated  
Estate Agent  
and Letting Agent

dexters.co.uk