



## Mimosa Street, SW6

£3,500 Per calendar month

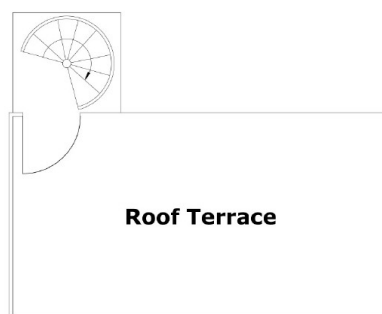
A beautifully presented, split level apartment on this popular residential road. The property offers an open plan kitchen/reception area, two double bedrooms, modern bathroom, roof terrace and parquet wooden flooring.

Mimosa Street is perfectly located for the amenities on Fulham Road and close to the transport links of Parsons Green.

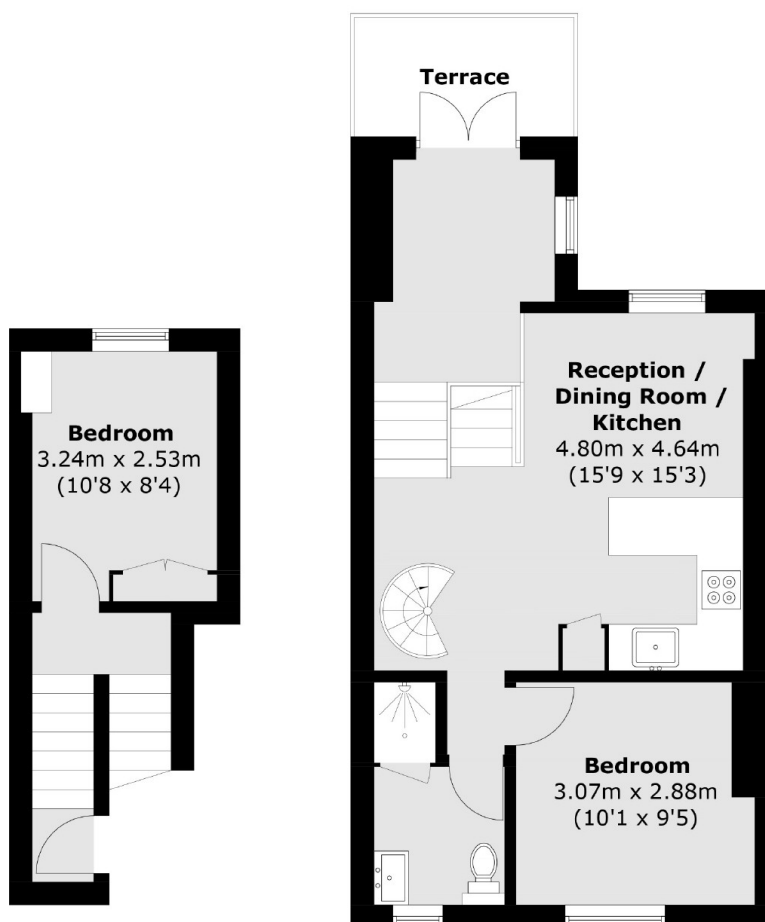
### Features

- Roof Terrace
- Parquet Flooring
- Split Level
- Quiet Residential Road
- Period Conversion
- Parsons Green

# Mimosa Street, London, SW6



**Third Floor**



**First Floor**

**Second Floor**

Total area (approx.): 56.2 sq. m (604.9 sq. ft)  
Terrace area : 17.1 sq. m (184.1 sq. ft)