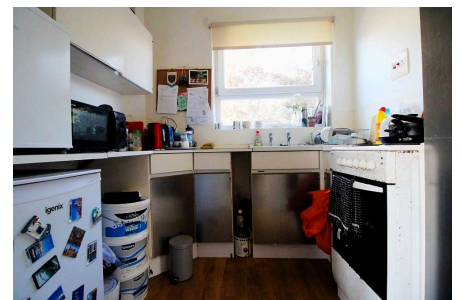
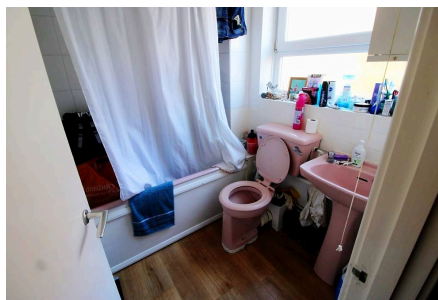
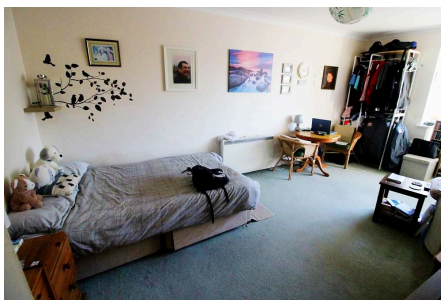


Hartington Place, Eastbourne, BN21 3BW

£80,000

1 1 0



CASH BUYERS ONLY Eastbourne Property Shop are delighted to offer to the market, a well-presented Studio apartment forming part of this popular development directly off the seafront and within easy walking distance of the town centre & mainline railway station. The flat benefits from a spacious studio room, kitchen & bathroom, double glazing and electric heating. The flat has residents' parking facilities. The property is currently rented at £650 p.c.m.

Key Features

-
-
-
-
-
-
-

