



High Street, Methwold, Thetford, IP26 4NT

welcome to

High Street, Methwold, Thetford

A CHARMING COTTAGE in the popular Norfolk village of Methwold, boasting a range of character features throughout, three bedrooms and even ANNEXE! Situated CENTRALLY WITHIN THE VILLAGE, you could walk to the local shop, park and school! CHAIN FREE SALE!

The Accommodation

Entrance door to:

Entrance Hall

With window and door to front, parquet flooring, built in storage cupboard and radiator.

Cloakroom

With W.C and sink unit with taps over.

Living Room

21' 7" max. x 12' 5" (6.58m max. x 3.78m)

With feature logburner inset into a fireplace, two windows to side and radiator.

Dining Room / Snug

With feature fireplace, parquet flooring, beams, window to side and radiator.

Kitchen / Breakfast Room

14' 6" x 16' 1" (4.42m x 4.90m)

With a range of fitted kitchen units at base level with work surface over, inset butler sink unit with taps over, space and plumbing for dishwasher, gas oven, window to side and radiator.

Utility Room

With inset sink unit with taps over, space and plumbing for washing machine, space for tumble dryer, built in pantry cupboard, built in under stairs storage and door leading out to the rear garden.

First Floor Landing

With window to side.

Bedroom One

10' 10" x 13' 2" (3.30m x 4.01m)

With fitted wardrobes, window to front and radiator.

Bedroom Two

9' x 10' 3" (2.74m x 3.12m)

With two fitted wardrobes, window to front and radiator.

Bedroom Three

10' 11" x 9' 10" (3.33m x 3.00m)

With window to front and radiator.

Bathroom

With W.C, wash hand basin with taps over, bath with taps over, shower cubicle with shower attachment over, built in airing cupboard and radiator.

Annexe:

Living Room

24' 3" x 13' 10" (7.39m x 4.22m)

With stairs leading back to the main house, built in storage cupboard, two windows to rear, radiator and being open onto:

Kitchen

With a range of fitted kitchen units at wall and base level with work surface over, sink unit with tap over, oven and space for under counter fridge or freezer.

Shower Room

With W.C, wash hand basin with taps over, space and plumbing for washing machine and shower cubicle with shower attachment over.





Outside

Front Garden

To the front of the property, there is a large shingled area which offers plenty of space for off road parking and is enclosed by gates. There is also the external oil tank and a storage shed and boiler cupboard.

Rear Garden

To the rear, the garden is fully enclosed and private and offers a patio seating area, timber decking area and garden shed.



view this property online williamhbrown.co.uk/Property/BRD111000



welcome to

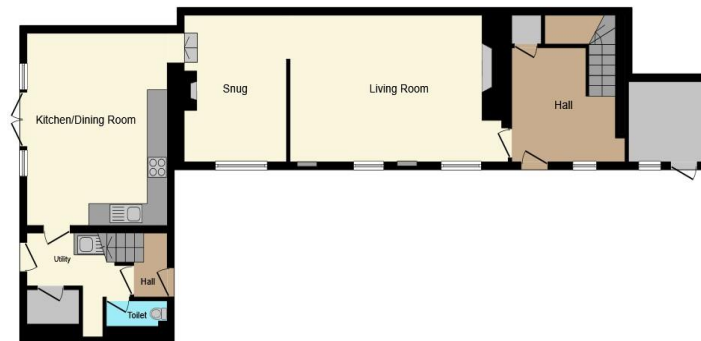
High Street, Methwold, Thetford

- Charming Cottage with Retained Character Features
- Three Bedrooms in the Main House
- One Bedroom Annexe/Studio
- Two Reception Rooms, Feature Fireplace
- Enclosed Garden to Rear
- Hugely Popular Village Location
- Driveway & Ample Off Road Parking
- Chain Free Sale!

Tenure: Freehold EPC Rating: E

Offers in Excess of

£375,000



Ground Floor



First Floor

This floor plan is for illustrative purposes only. It is not drawn to scale. Any measurements, floor areas (including any total floor area), openings and orientation are approximate. No details are guaranteed, they cannot be relied upon for any purpose and they do not form part of any agreement. No liability is taken for any error, omission or misstatement. A party must rely upon its own inspection(s). Powered by www.focalagent.com

view this property online williamhbrown.co.uk/Property/BRD111000



Property Ref:
BRD111000 - 0003

1. MONEY LAUNDERING REGULATIONS Intending purchasers will be asked to produce identification documentation at a later stage and we would ask for your co-operation in order that there is no delay in agreeing the sale. 2. These particulars do not constitute part or all of an offer or contract. 3. The measurements indicated are supplied for guidance only and as such must be considered incorrect. Potential buyers are advised to recheck measurements before committing to any expense. 4. We have not tested any apparatus, equipment, fixtures or services and it is in the buyers interest to check the working condition of any appliances. 5. Where an EPC, or a Home Report (Scotland only) is held for this property, it is available for inspection at the branch by appointment. If you require a printed version of a Home Report, you will need to pay a reasonable production charge reflecting printing and other costs. 6. We are not able to offer an opinion either written or verbal on the content of these reports and this must be obtained from your legal representative. 7. Whilst we take care in preparing these reports, a buyer should ensure that his/her legal representative confirms as soon as possible all matters relating to title including the extent and boundaries of the property and other important matters before exchange of contracts.

William H Brown is a trading name of Sequence (UK) Limited which is registered in England and Wales under company number 4268443, Registered Office is Cumbria House, 16-20 Hockliffe Street, Leighton Buzzard, Bedfordshire, LU7 1GN. VAT Registration Number is 500 2481 05.



william h brown



01842 811058



Brandon@williamhbrown.co.uk



18-20 High Street, BRANDON, Suffolk, IP27
0AQ



williamhbrown.co.uk

