

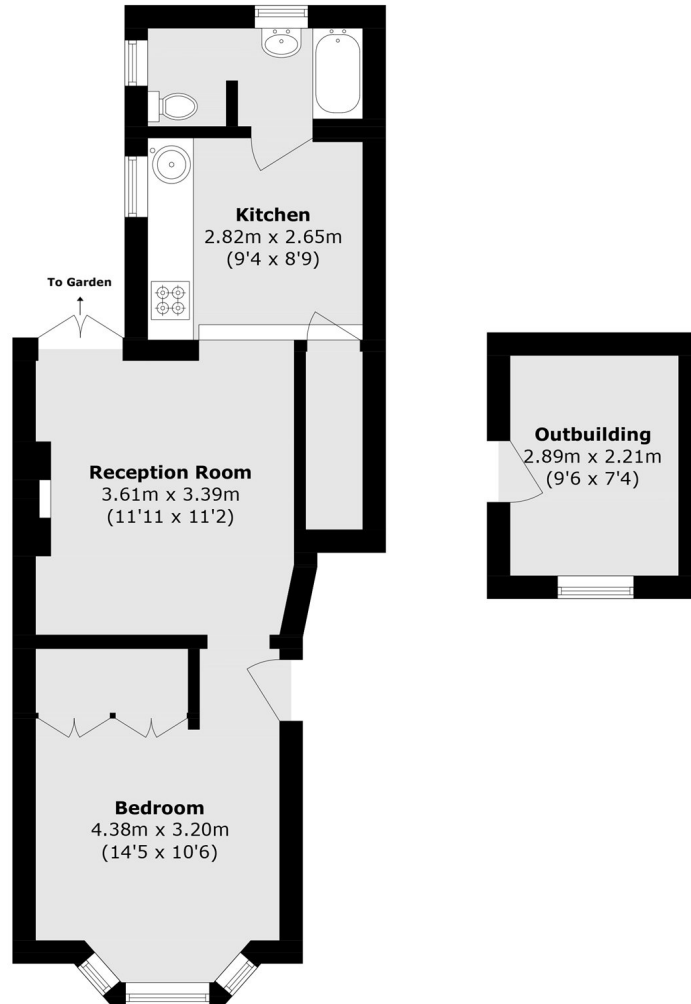


Osterley Park View Road, W7

£379,950

A bright and attractive one bedroom ground floor period conversion with desirable stripped wooden flooring and tastefully decorated throughout. The reception room provides access to the south facing private garden complete with decking and outhouse.

Conveniently located within a mile of both Boston Manor (Piccadilly line) and Hanwell (Elizabeth line) stations and close to local schools and parks.



Ground Floor

Total area (approx.): 40.2 sq. m (432.4 sq. ft)

Outbuilding (approx.): 6.4 sq. m (68.7 sq. ft)

Robertson Smith & Kempson Hanwell Sales
69 Greenford Avenue,
London, W7 1LL
020 8566 2339
hanwellsales@robertsonsmithandkempson.co.uk

Energy Rating: C. We aim to make our particulars both accurate and reliable. However they are not guaranteed; nor do they form part of an offer or contract. If you require clarification on any points then please contact us, especially if you're traveling some distance to view. Please note that appliances and heating systems have not been tested and therefore no warranties can be given as to their good working order.