



The Pine



🏠 775sq ft 🛏️ 2 🚿 1

The Pine is a stylish and well-designed two-bedroom home, perfect for modern living.

The ground floor features a welcoming entrance hall leading to a bright and spacious lounge/dining area, ideal for relaxing or entertaining. The separate kitchen is practical and well laid out, with plenty of space for everyday use, along with a convenient cloakroom.

Upstairs, there are two generous double bedrooms, both offering comfortable and flexible living space. A modern family bathroom and a useful storage cupboard off the landing complete the first floor.

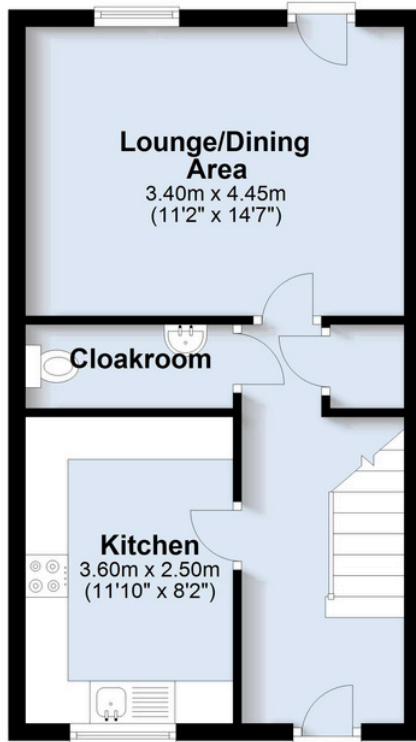
With a smart layout and a light, contemporary feel throughout, The Pine is a comfortable and easy-to-maintain home, ideal for a range of buyers.





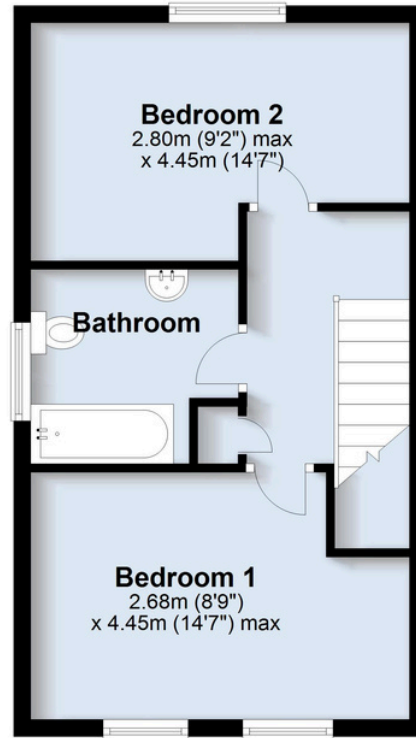
Ground Floor

Approx. 36.7 sq. metres (394.8 sq. feet)



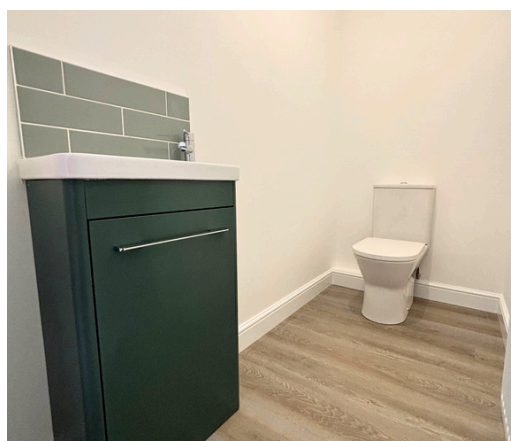
First Floor

Approx. 36.1 sq. metres (388.0 sq. feet)



Included as standard

- Solar PV
- Choice of quality fitted kitchen
- Integrated appliances
- All floor coverings and carpets
- Landscaped gardens
- Energy efficient
- 10 year NHBC warranty
- Ultra fast broadband
- Contemporary bath suite
- Security Alarm
- Choice of tiling in bathrooms
- Fully fenced
- Solid oak doors to ground floor
- No site maintenance fees



Visit our showhome

Dawnay Park Show Home
1 Dale Gate, Driffield YO25 5LN

Get in touch today by calling 01377 253456 or email
sales@ullyotts.co.uk to book an appointment.