
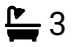



Fullerton Close, Fleet, GU51 1BJ

£950,000

 5  3  4

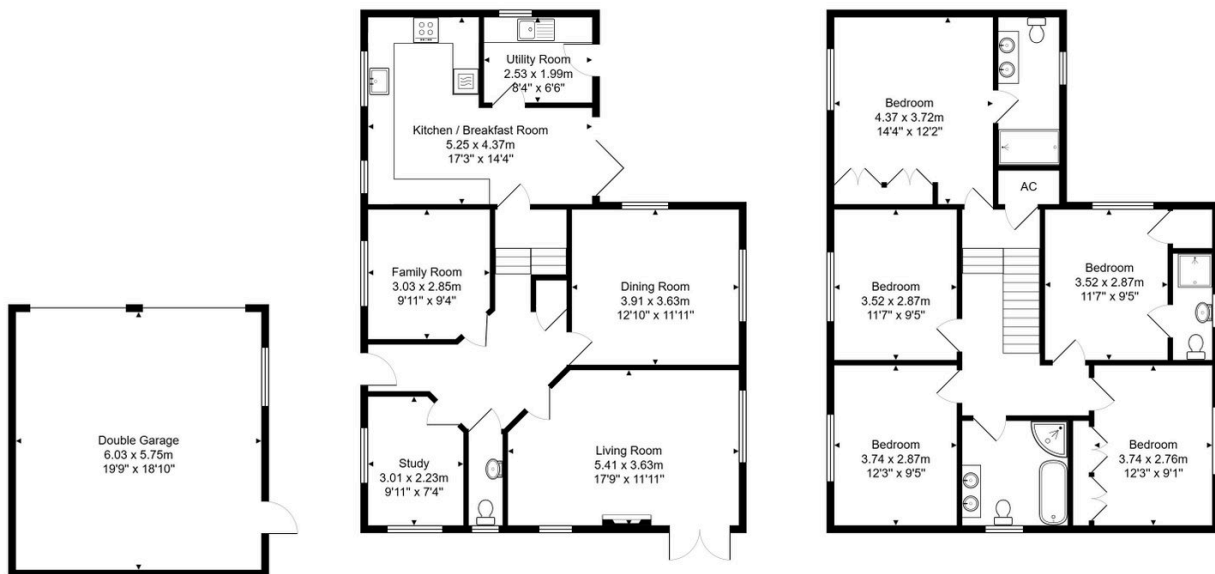


Located in a highly desirable cul-de-sac in Elvetham Heath stands this impressive five bedroom, four reception room detached family home.

Key Features

- Elvetham Heath
- Presented In Excellent Order Throughout
- Three Bathrooms
- Refitted Kitchen/Breakfast Room & Utility
- Double Garage & Large Drive
- Desirable Cul-de-sac
- Five Bedrooms
- Four Reception Rooms
- Refitted Triple Glazed Windows
- Mature Landscaped Rear Gardens

6, Fullerton Close, Fleet, GU51 1BJ



Total Area: 211.8 m² ... 2280 ft²

All measurements are approximate and for display purposes only