



House - Detached (EPC Rating:)

GOLF AT 6 GROSVENOR ROAD, BIRKDALE, SOUTHPORT, PR8 2JE

Per Week

£27,000

FEATURES

- Unbeatable Location for Golf
- Spacious Accommodation – Five double bedrooms
- Generous Living Spaces – Two large lounges
- Modern Open-Plan Kitchen opening onto a balcony with views over the garden.
- Beautiful Outdoor Space



 **anthony james**
estate agents

5 Bedroom House - Detached located in Birkdale

GOLF | CHARLOTTE HOUSE, GROUND FLOOR, 35-37 HOGHTON STREET, SOUTHPORT, MERSEYSIDE, PR9 0NS



GOLF | CHARLOTTE HOUSE, GROUND FLOOR, 35-37 HOGHTON STREET, SOUTHPORT, MERSEYSIDE, PR9 0NS



GOLF | CHARLOTTE HOUSE, GROUND FLOOR, 35-37 HOGHTON STREET, SOUTHPORT, MERSEYSIDE, PR9 0NS



GOLF | CHARLOTTE HOUSE, GROUND FLOOR, 35-37 HOGHTON STREET, SOUTHPORT, MERSEYSIDE, PR9 0NS

Call us on

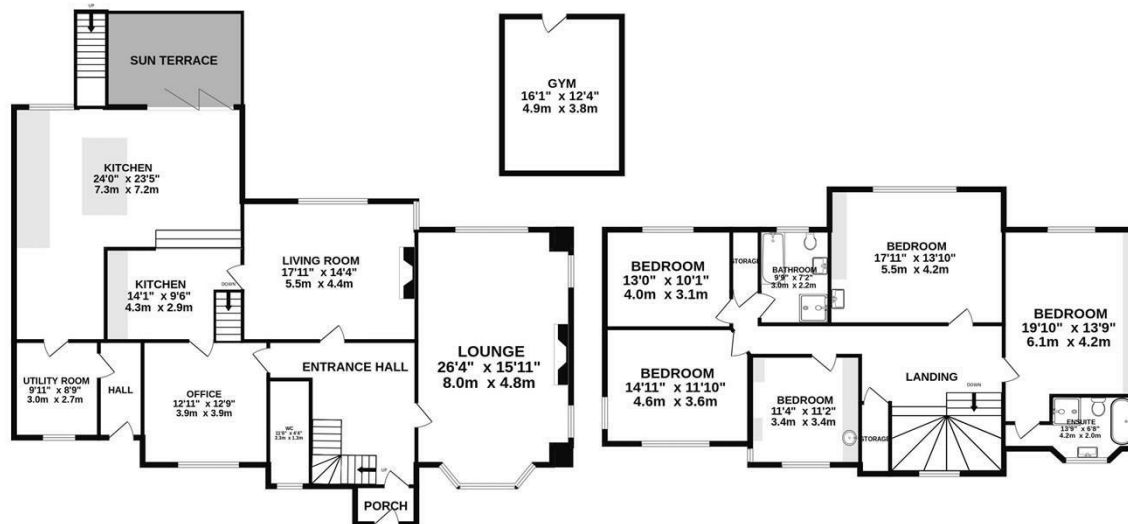
01704543434

golf@ajestateagents.co.uk

<https://www.ajestateagents.co.uk/properties/to-rent/sort-price-asc>

Council Tax Band

GROSVENOR ROAD



Whilst every attempt has been made to ensure the accuracy of the floorplan contained here, measurements of doors, windows, rooms and any other items are approximate and no responsibility is taken for any error, omission or mis-statement. This plan is for illustrative purposes only and should be used as such by any prospective purchaser. The services, systems and appliances shown have not been tested and no guarantee as to their operability or efficiency can be given.
Made with Metropix ©2025

Energy Efficiency Rating		
	Current	Potential
<i>Very energy efficient - lower running costs</i>		
(92 plus) A		
(81-91) B		
(69-80) C		
(55-68) D		
(39-54) E		
(21-38) F		
(1-20) G		
<i>Not energy efficient - higher running costs</i>		
England & Wales	EU Directive 2002/91/EC	

Agents Note: Whilst every care has been taken to prepare these particulars, they are for guidance purposes only. All measurements are approximate and are for general guidance purposes only and whilst every care has been taken to ensure their accuracy, they should not be relied upon and potential buyers are advised to recheck the measurements.

