



George Street, W1H

£1,000 Per week

A modern two bedroom apartment arranged over the third and fourth floors of this attractive Georgian building on George Street.

George Street is moments from the open spaces of Hyde Park and a short walk from the vibrant shops, bars and restaurants of Portman Village and Marylebone Village. Edgware Road, Marble Arch and Bond Street stations are all close by.

Features

- Duplex Apartment
- Modern Spec
- Kitchen/Reception
- Two Bedrooms
- Owned and Managed by The Portman Estate
- Complimentary Membership to Portman Concierge



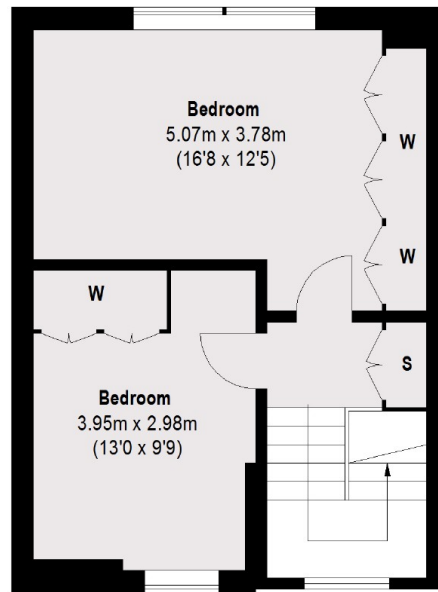
George Street, W1H

The flat has a stylish kitchen with built-in appliances and marble worktops, leading through to the reception room with wood flooring and lots of natural light. The shower room is off the hallway on the same floor.

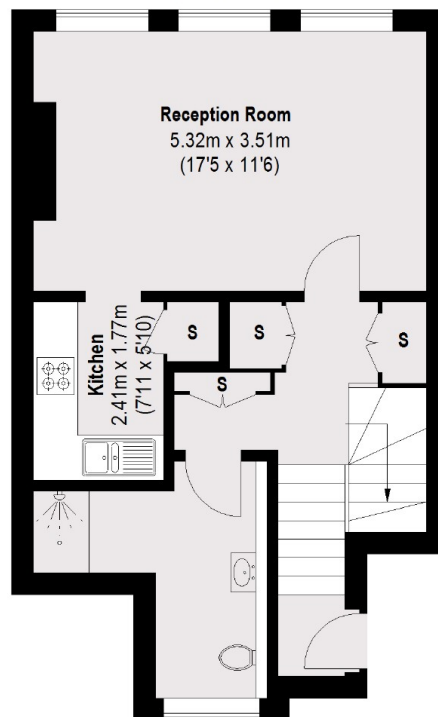
Both bedrooms are on the top floor and are good sized double rooms with built-in wardrobes.



George Street,
London, W1H



Fourth Floor



Third Floor

Total area (approx.): 81.17 sq. m (874 sq. ft)