

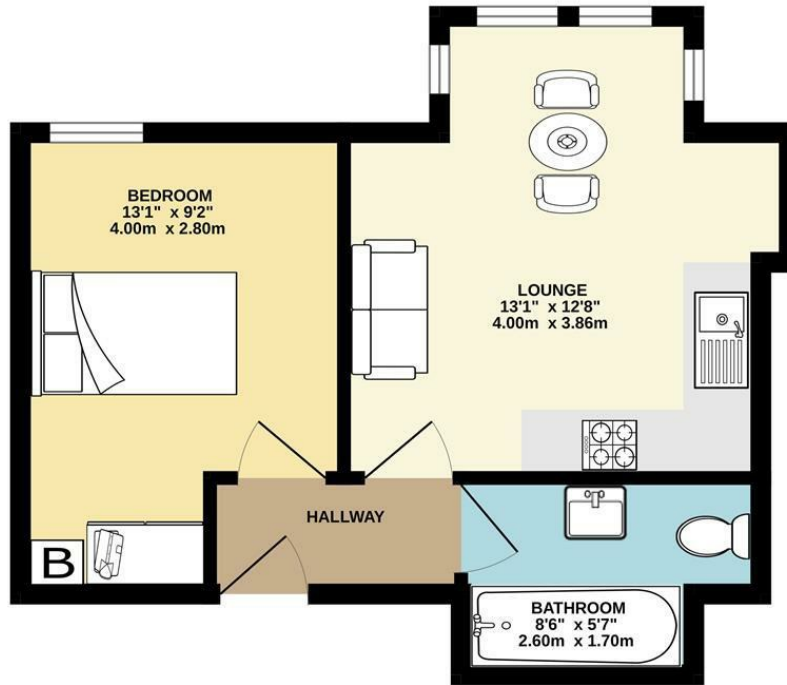


**1 Bed
Apartment
located
in Didsbury**

£925 PCM



FIRST FLOOR
318 sq.ft. (29.5 sq.m.) approx.



DIRECTIONS

CONTACT

31 Barlow Moor Road
Didsbury
Manchester
M20 6TW

E: office@stantonproperties.co.uk
T: 01614345307

TOTAL FLOOR AREA : 318 sq.ft. (29.5 sq.m.) approx.

Whilst every attempt has been made to ensure the accuracy of the floorplan contained here, measurements of doors, windows, rooms and any other items are approximate and no responsibility is taken for any error, omission or mis-statement. This plan is for illustrative purposes only and should be used as such by any prospective purchaser. The services, systems and appliances shown have not been tested and no guarantee, as to their operability or efficiency can be given.
Made with Metropix ©2026

